

# Rollin® Graffity Plus

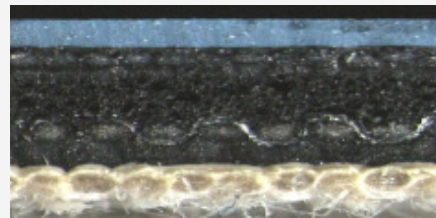
## Key performance

- Excellent half tone reproduction
- Reduced gauge loss
- Implements all benefits of the **Dynatech System:**
  - Better vibration absorption
  - Less gears streaking marks
  - Higher paper smash resistance
  - Blanket consistency
  - Excellent reboundability

## MAIN APPLICATION

Sheetfed, Coldset

**Rollin Graffity Plus is available in 3-ply, 1,95 mm thickness**



**Rollin Graffity Plus**



## The product at a glance

<b>INK COMPATIBILITY</b>	Hybrid
<b>PRINTING SURFACE COLOUR</b>	Blue
<b>THICKNESS (mm)</b>	1,95
<b>AVERAGE LOAD VALUE N/cm2 @ 0,23 mm Indentation</b>	250
<b>SURFACE ROUGHNESS (Ra micron)</b>	1,0
<b>ELONGATION (%)</b>	<0,9
<b>TENSILE STRENGTH (N/mm)</b>	>67
<b>FEED FEATURES</b>	Positive
<b>WATER SOLVENT PROTECTION</b>	Yes
<b>ADVANCED TECHNOLOGY</b>	Dynatech

**FOR ANY FURTHER DETAILS AND FOR A QUOTATION  
PLEASE REFER TO YOUR SALES MANAGER  
OR EMAIL US AT: [printingsm@trelleborg.com](mailto:printingsm@trelleborg.com)**