



Engineered for the extreme

**PNEUMATIC TIRES FOR THE
CONSTRUCTION INDUSTRY**



The Trelleborg Construction Series

The Construction Series from Trelleborg is a range of tires, tracks and wheels built for the most demanding construction environments on earth. Engineered for the extreme our products are field-tested to ensure they meet the demands of the industry and provide an excellent total value of ownership. Premium compounding and advanced tire design combine to create products that last longer and help reduce downtime. The Trelleborg Construction Series delivers value by maximizing machine productivity and efficiency.

For application specific needs, Trelleborg Wheel Systems offers a range of custom sizes and treads.



TRELLEBORG PROVIDES SOLUTIONS FOR:

| VEHICLE TYPE | PRODUCT RANGE | |
|--|---------------------------------------|---|
|  Wheel Loaders | C-800 E3/L3 & L2 |   |
|  Motor Graders | C-800 G2 & L2 |   |
|  Skid Steer Loaders | SK-800, SK-900 & SK-900 ND |   |
|  Backhoes | C-800 F3 & R4 |   |
|  Wheeled Excavator | C-800 Excavator |  |
|  Telehandlers/Boom Lifts | C-800 G2 & L2 |   |

C-800 E3/L3 & L2



The C-800 E3/L3 tread pattern is designed to provide extended wear. The longer life helps reduce the total cost of ownership while increasing efficiency and productivity.

The C-800 L2's self-cleaning profile offers a large footprint providing flotation on soft surfaces. Durable nylon construction provides strength and resistance to impact damage.

C-800 E3/L3

- Durable Nylon Construction
- Flat Profile Increases Stability
- Rugged Tread Design Provides Increased Traction
- Chip and Chunk Resistance for long life

C-800 L2

- Large Footprint
- Flat Profile with Deep Lugs
- Long Lasting Tread Life
- Good Flotation on Soft Surfaces



C-800 E3/L3



C-800 L2



| Tire Size | Ply Rating | Rim | Tire O.D. | Section Width | Tread Depth | Inflation @ 10 km/h (Loaders) Pressure | Inflation @ 50 km/h (Dumpers) | Load Capacity @ 10 km/h | Load Capacity @ 50 km/h | Tire Weight |
|--------------------|------------|--------------|-----------|---------------|-------------|--|-------------------------------|-------------------------|-------------------------|-------------|
| | | | mm | mm | mm | bar | bar | kg | kg | kg |
| C-800 E3/L3 | | | | | | | | | | |
| 17.5-25 | 16 | 14.00-25/1.5 | 1350 | 445 | 26 | 4.8 | 3.0 | 7300 | 4250 | 117.3 |
| 20.5-25 | 20 | 17.00-25/2.0 | 1490 | 520 | 29 | 4.5 | 3.3 | 9500 | 6000 | 173.6 |
| 23.5-25 | 20 | 19.50-25/2.5 | 1615 | 595 | 30 | 3.8 | 3.0 | 10900 | 7300 | 233.6 |
| 26.5-25 | 28 | 22.00-25/3.0 | 1750 | 675 | 35 | 4.8 | 3.5 | 15500 | 10000 | 379.1 |
| 29.5-25 | 28 | 25.00-25/3.5 | 1875 | 750 | 38 | 4.3 | 3.3 | 17500 | 11500 | 445.5 |

| Tire Size | Ply Rating | Rim | Tire O.D. | Section Width | Tread Depth | Inflation Pressure | Load Capacity @ 10 km/h | Tire Weight |
|-----------------|------------|--------------|-----------|---------------|-------------|--------------------|-------------------------|-------------|
| | | | mm | mm | mm | bar | kg | kg |
| C-800 L2 | | | | | | | | |
| 17.5-25 | 16 | 14.00-25/1.5 | 1350 | 445 | 26 | 4.8 | 7300 | 93.6 |
| 20.5-25 | 16 | 17.00-25/2.0 | 1490 | 520 | 30 | 3.5 | 8250 | 133.6 |

C-800 G2 & L2



The C-800 G2 & L2 Motor Grader tires feature a deep lug. They are ideal for applications which require good flotation on soft surfaces. Durable nylon construction provides strength and resistance to impact damage. The excellent stability and safety make these tires an ideal choice for Telehandler and Boom Lift tire solutions. The durable nylon construction provides strength and resistance to impact damage.

- Large Footprint
- Flat Profile with Deep Lugs
- Long Lasting Tread Life
- Good Flotation on Soft Surfaces



C-800 G2



C-800 L2



| Tire Size | Ply Rating | Rim | Tire O.D. mm | Section Width mm | Tread Depth mm | Inflation Pressure bar | Load Capacity G-2: @ 40 km/h L-2: @ 10 km/h kg | Tire Weight kg |
|-----------------|------------|--------------|-----------------|---------------------|-------------------|---------------------------|---|-------------------|
| C-800 G2 | | | | | | | | |
| 13.00-24 | 12 | 9.00DC-24 | 1300 | 350 | 24 | 3.0 | 2725 | 65.0 |
| 14.00-24 | 12 | 9.00DC-24 | 1370 | 375 | 25 | 2.5 | 3075 | 80.5 |
| C-800 L2 | | | | | | | | |
| 17.5-25 | 16 | 14.00-25/1.5 | 1350 | 445 | 26 | 4.8 | 7300 | 93.6 |
| 20.5-25 | 16 | 17.00-25/2.0 | 1490 | 520 | 30 | 3.5 | 8250 | 133.6 |

C-800 Excavator



Trelleborg Excavator pneumatic tires offer excellent traction and stability through their tread design and construction.

| Tire Size | Ply Rating | Rim | Tire O.D. mm | Section Width mm | Tread Depth mm | Inflation Pressure bar | Load Capacity @ 25 km/h kg | Tire Weight kg |
|------------------------|------------|--------|-----------------|---------------------|-------------------|---------------------------|----------------------------------|-------------------|
| C-800 EXCAVATOR | | | | | | | | |
| 10.00-20 | 16 | 8.0-20 | 1073 | 278 | 20 | 9.0 | 5000 | 44.8 |



C-800 Excavator

SK-900 & SK-800, SK-900 Non-Directional Skid Steer



SK-900 & SK-800

The SK-900 premium tire is designed for use in heavy duty applications. The SK-800 is designed for general purpose use in construction applications. These tires have a wide lug tread pattern that provides optimal grip and traction on both smooth and rough surfaces. The high quality tread compound promotes maximum tire life and increased cut and chip resistance.

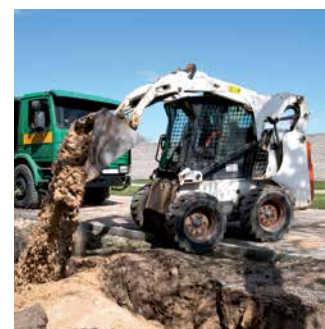
- Natural Rubber
- Extended Tire Life
- High Stability / Maximum Safety
- Optimal Grip and Traction



SK-900



SK-800



| Tire Size | Ply Rating | Rim | Tire O.D. mm | Section Width mm | Tread Depth mm | Inflation Pressure bar | Load Capacity @ 10 km/h kg | Tire Weight kg |
|--------------------------|------------|------------|-----------------|---------------------|-------------------|---------------------------|-------------------------------|-------------------|
| SK-900 SKID STEER | | | | | | | | |
| 10-16.5 | 8 | 8.25-16.5 | 773 | 264 | 16 | 4.1 | 1880 | 24.1 |
| 10-16.5 | 10 | 8.25-16.5 | 773 | 264 | 16 | 5.2 | 2135 | 24.6 |
| 12-16.5 | 10 | 9.75-16.5 | 831 | 307 | 17 | 4.5 | 2540 | 33.6 |
| 14-17.5 | 14 | 10.50-17.5 | 921 | 349 | 22 | 5.5 | 3875 | 53.6 |
| 15-19.5 | 14 | 11.75-19.5 | 1019 | 389 | 22 | 4.8 | 4565 | 71.4 |

| | | | | | | | | |
|--------------------------|----|-----------|-----|-----|----|------|------|------|
| SK-800 SKID STEER | | | | | | | | |
| 10-16.5 | 8 | 8.25-16.5 | 751 | 270 | 16 | 4.1 | 1880 | 20.9 |
| 10-16.5 | 10 | 8.25-16.5 | 751 | 270 | 16 | 5.2 | 2135 | 21.4 |
| 12-16.5 | 10 | 9.75-16.5 | 815 | 308 | 17 | 4.5 | 2540 | 25.9 |
| 23 x 8.5-12 | 6 | 7.0-12 | 574 | 213 | 12 | 3.4 | 820 | 11.8 |
| 27 x 8.5-15 | 8 | 7.0-15 | 678 | 213 | 12 | 4.15 | 1305 | 14.5 |

SK-900 NON-DIRECTIONAL SKID STEER

The SK-900 ND is designed for maximum performance on concrete, asphalt and other hard surfaces.

- Deeper Tread than a Standard Skid Steer Tire for Better Wear
- Flat Profile with Reinforced Sidewalls for Maximum Protection
- Tread Design pulls Equally when going Forward or in Reverse

| Tire Size | Ply Rating | Rim | Tire O.D. mm | Section Width mm | Tread Depth mm | Inflation Pressure bar | Load Capacity @ 10 km/h kg | Tire Weight kg |
|--|------------|-----------|-----------------|---------------------|-------------------|---------------------------|----------------------------------|-------------------|
| SK-900 NON-DIRECTIONAL SKID STEER | | | | | | | | |
| 10-16.5 | 10 | 8.25-16.5 | 773 | 264 | 27 | 5.2 | 2135 | 33.9 |
| 12-16.5 | 12 | 9.75-16.5 | 831 | 305 | 33 | 5.5 | 2865 | 42.4 |



SK-900 ND

C-800 F3 & R4



The C-800 F3 (11L-16) and C-800 R4 (12.5/80-18) are purpose designed for use on the front of Backhoes. The wide profile offers a large surface area for better stability and improved flotation. The C-800 R4 (17.5L-24, 19.5L-24 and 21L-24) is designed for use on the rear of Backhoes. This profile has an extra-wide lug which provides increased chip and chunk resistance.

- Improved Flotation
- Excellent Stability
- Longer Tire Life
- Sidewall Protection
- Increased Chip & Chunk Resistance



C-800 F3



C-800 R4



| Tire Size | Ply Rating | Rim | Tire O.D. mm | Section Width mm | Tread Depth mm | Inflation Pressure bar | Load Capacity @ 40 km/h kg | Tire Weight kg |
|-----------|------------|-----|-----------------|---------------------|-------------------|---------------------------|----------------------------------|-------------------|
|-----------|------------|-----|-----------------|---------------------|-------------------|---------------------------|----------------------------------|-------------------|

C-800 F3

| | | | | | | | | |
|---------------|----|--------|-----|-----|----|-----|------|------|
| 11L-16 | 10 | 8.0-16 | 838 | 279 | 11 | 3.6 | 1120 | 22.7 |
|---------------|----|--------|-----|-----|----|-----|------|------|

C-800 R4

| | | | | | | | | |
|-------------------|----|----------|------|-----|------|-----|------|-------|
| 10.5/80-18 | 12 | W9-18 | 907 | 274 | 22 | 4.3 | 2060 | 32.0 |
| 12.5/80-18 | 12 | 9.0-18 | 987 | 308 | 26 | 3.7 | 2650 | 41.4 |
| 16.9-24 | 12 | DW15L-24 | 1309 | 429 | 26.5 | 2.6 | 3250 | 74.0 |
| 16.9-28 | 12 | DW15L-28 | 1410 | 429 | 27 | 2.6 | 3450 | 85.0 |
| 17.5L-24 | 10 | DW15L-24 | 1241 | 445 | 26 | 2.2 | 2800 | 74.5 |
| 18.4-26 | 12 | DW16L-26 | 1426 | 467 | 29 | 2.5 | 4000 | 105.0 |
| 19.5L-24 | 12 | DW16L-24 | 1314 | 495 | 28 | 2.4 | 3450 | 93.6 |
| 21L-24 | 14 | DW18L-24 | 1378 | 533 | 32 | 2.5 | 4250 | 116.0 |



Trelleborg is a world leader in engineered polymer solutions that seal, damp and protect critical applications in demanding environments. Our innovative engineered solutions accelerate performance for customers in a sustainable way. The Trelleborg Group has local presence in over 40 countries around the world.