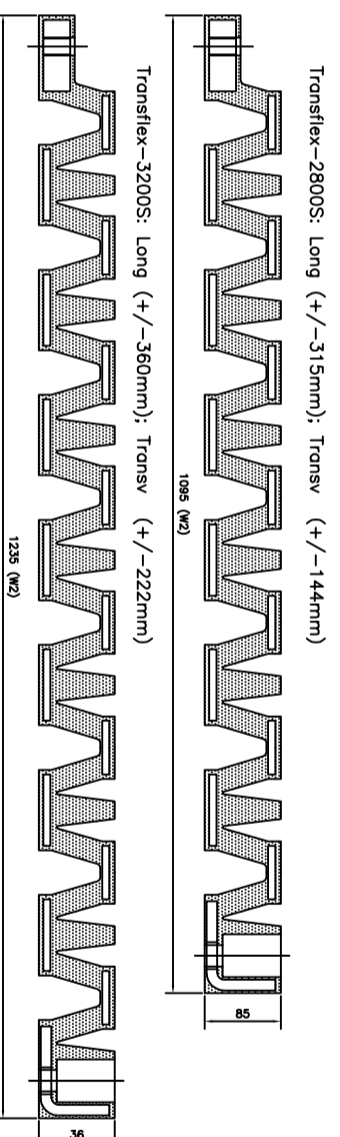
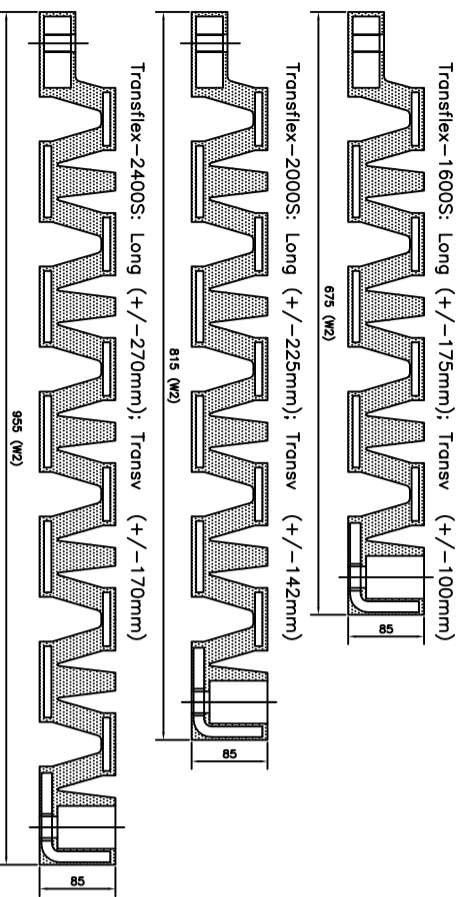
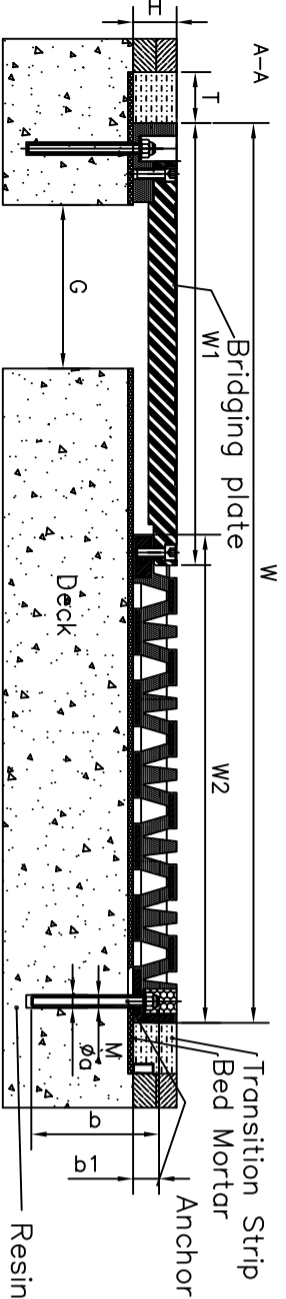
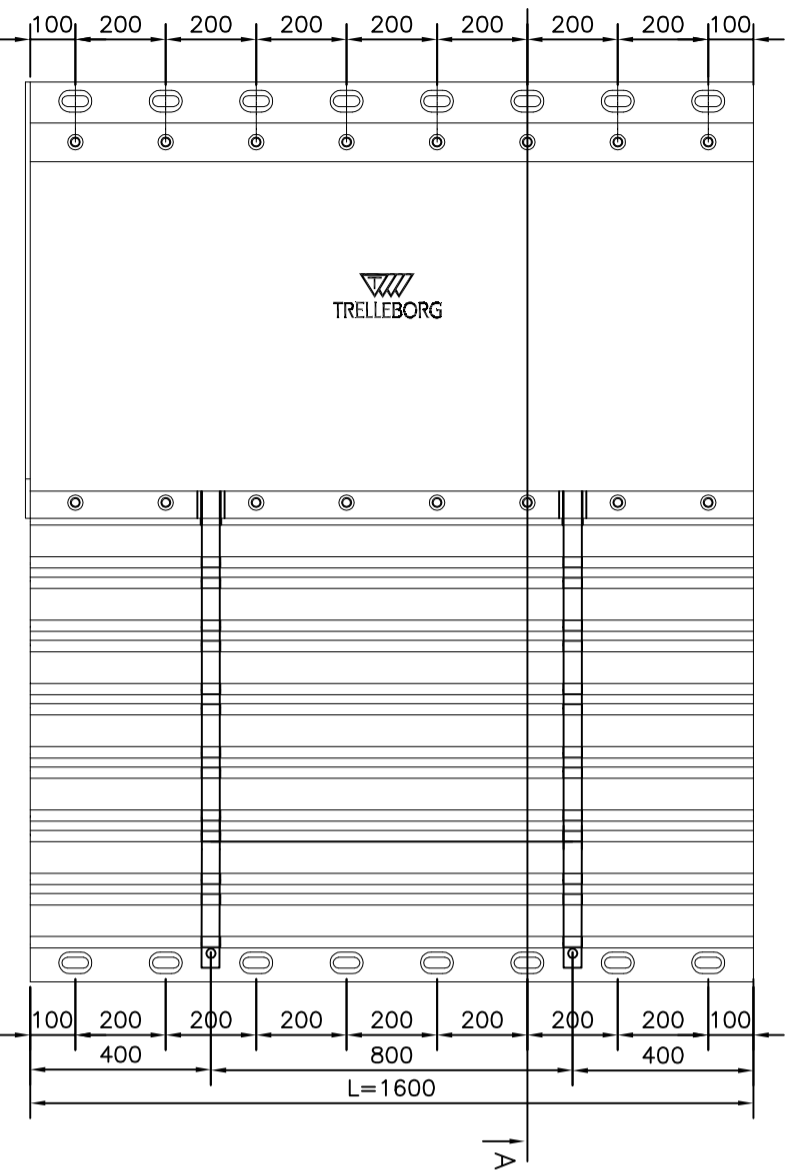


Road bridge Expansion Joint Transflex 1600S-3200S



Whilst all reasonable care is taken in compiling technical data on the company's products, some changes might take place with no responsibility for Trelleborg Izarra. Also all recommendations or suggestions regarding the use of any products are made without guarantee since the conditions of use are beyond the control of the company. It is the customer's responsibility to satisfy himself that each product is fit for the purpose for which he intends to use it and that the actual conditions of use are suitable.



Module	Movement		Module		Weight		Anchor					
	Longitudinal	Longitudinal	L	H	W	Weight	CL	G	T	Mxb	φa	b1
Transflex 1600S	(mm)	(mm)	(mm)	(mm)	(mm)	(mm)	(mm)	(mm)	(mm)	(mm)	(mm)	(mm)
	350 (±175)	200 (±100)	1600	85	1280	675	460	200	220	170	M20x200	22

Module	Movement		Module		Weight		Anchor					
	Longitudinal	Longitudinal	L	H	W	Weight	CL	G	T	Mxb	φa	b1
Transflex 2000S	(mm)	(mm)	(mm)	(mm)	(mm)	(mm)	(mm)	(mm)	(mm)	(mm)	(mm)	(mm)
	450 (±225)	284 (±142)	1600	85	1520	775	585	200	220	170	M20x200	22

Module	Movement		Module		Weight		Anchor					
	Longitudinal	Longitudinal	L	H	W	Weight	CL	G	T	Mxb	φa	b1
Transflex 2400S	(mm)	(mm)	(mm)	(mm)	(mm)	(mm)	(mm)	(mm)	(mm)	(mm)	(mm)	(mm)
	540 (±270)	340 (±170)	1600	85	1760	875	710	200	320	170	M20x200	22

Module	Movement		Module		Weight		Anchor					
	Longitudinal	Longitudinal	L	H	W	Weight	CL	G	T	Mxb	φa	b1
Transflex 2800S	(mm)	(mm)	(mm)	(mm)	(mm)	(mm)	(mm)	(mm)	(mm)	(mm)	(mm)	(mm)
	630 (±315)	388 (±194)	1600	85	2000	975	765	200	370	170	M20x200	22

Module	Movement		Module		Weight		Anchor					
	Longitudinal	Longitudinal	L	H	W	Weight	CL	G	T	Mxb	φa	b1
Transflex 3200S	(mm)	(mm)	(mm)	(mm)	(mm)	(mm)	(mm)	(mm)	(mm)	(mm)	(mm)	(mm)
	720 (±360)	444 (±222)	1600	85	2240	1075	930	200	420	170	M20x200	22

ESTE DIBUJO PERTENECE A Trelleborg IESA, s.a. Y NO DEBE SER REPRODUCIDO O USADO INDEBIDAMENTE O COMUNICADO A TERCERAS PARTES SIN CONSENTIMIENTO ESCRITO EN CADA CASO.

Trelleborg IESA, s.a.
c/ San Vicente,25 -E 01440 Izarra (Alava) - Spain - Tel: +34 945 437 090 - Fax: +34 945 437 050
Internet : www.trelleborgiesa.com - R. Mercantil de Alava. Tomo 771. Folio 208. Hoja VI-5303 Insc. 1ª - A-01241744

	DRAWN	REVISED	APPROVED	DATE	TITLE: PROJECT: CUSTOMER:	REF. DRAW REV Nº_HOJA
	U.L.	U.L.	J.R.A.	01/2016		
SCALE: S/E					Trelleborg Izarra, s.a. Expandite Division c/Sierra de Algodonales 12-14 28.500 Arganda del Rey (Madrid) - Spain Tel: +34 91 870 17 00 - Fax: +34 91 870 34 65 expandite@trelleborg.com	TRANSFLEX_1600S-3200S