



# Premium Performance

PREMIUM

MID-RANGE

ECONOMY

PREMIUM MATERIALS HANDLING RESILIENT

**TRELLEBORG  
ELITE XP**



## PREMIUM MATERIALS HANDLING RESILIENT TRELLEBORG ELITE XP

Trelleborg Elite XP is engineered to meet the key requirements of today's materials handling equipment.

The Elite XP resilient tires feature the Pit Stop Line wear indicator. The Pit Stop Line ensures that users get maximum whole-life value from their choice of tire by always replacing them at the right time and being able to keep forklift downtime to a minimum, as well as always knowing that their tires are safe to use.

The Elite XP's square footprint provides excellent stability and greater contact area, which reduces uneven wear and results in a longer tire life.



## THE PIT STOP LINE

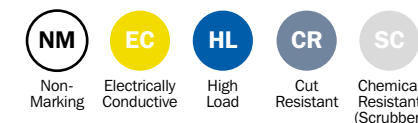
Choosing Pit Stop Line tires ensures that customers always get maximum value by replacing tires at the right time. As the tire tread wears down, a highly visible orange stripe appears on the tire surface indicating approximately 100 hours of tire life remaining. This allows ample time to schedule replacement at your convenience without compromising performance, safety or productivity.



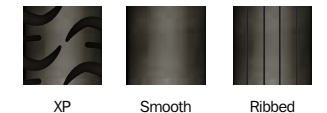
Tire Size	Alternative Size	Rim Size	Additional Pattern	LOC	Tire Dimensions [in]		Load Capacity [lbs]			Weight [lbs]
					Overall Diameter	Section Width	Static	Counterbalanced lift trucks up to 15 mph		
								Load Wheel	Steering Wheel	
3.00-4		2.10-4			9.9	3.3	650	575	430	8
3.00-4		2.50C-4			9.9	3.3	650	575	430	8
4.00-4		2.50C-4			12.1	3.6	1,380	1,180	910	14
4.00-8		3.00D-8		•	16.0	4.1	2,425	2,095	1,610	24
4.00-8		3.00D-8	Ribbed		16.0	4.1	2,425	2,095	1,610	24
15x4½-8	125/75-8	3.00D-8	Ribbed	•	14.8	4.6	2,670	2,295	1,765	22
15x4½-8	125/75-8	3.25D-8			14.8	4.6	2,670	2,295	1,765	22
5.00-8		3.00D-8		•	18.0	4.8	3,640	3,120	2,405	38
16x6-8	150/75-8	4.33R-8		•	16.2	6.0	3,835	3,295	2,535	36
18x7-8	180/70-8	4.33R-8	Smooth	•	18.0	6.2	5,490	4,730	3,640	48
140/55-9	15x5.5-9	4.00E-09		•	15.0	5.2	3,000	2,580	1,985	24
6.00-9		4.00E-09		•	20.6	5.6	4,830	4,155	3,195	58
21x8-9	200/75-9	6.00E-09		•	20.4	7.3	7,055	6,075	4,675	75
6.50-10		5.00F-10		•	22.6	6.3	5,995	5,160	3,970	80
180/60-10		5.00F-10		•	18.0	6.2	6,160	5,315	4,080	47
200/50-10		6.50F-10		•	18.0	7.8	6,325	5,445	4,190	56
23x9-10	225/75-10	6.50F-10		•	23.0	7.9	8,820	7,595	5,840	106
7.00-12		5.00S-12	Smooth	•	25.6	6.8	7,450	6,435	4,940	105
23x10-12	250/60-12	8.00G-12	Smooth	•	23.0	9.4	9,655	8,310	6,395	114
27x10-12	250/75-12	8.00G-12		•	26.6	9.4	9,985	8,600	6,615	168
315/45-12		10.00G-12		•	22.5	11.0	11,485	9,890	7,605	128
23x5-13		3.75P-13		•	24.3	5.4	3,835	3,295	2,535	68
5.50-15		4.5-15			26.1	5.6	5,490	4,730	3,640	82
6.00-15		4.5-15			27.3	5.9	5,995	5,160	3,970	96
7.00-15	29x8-15	5.5-15		•	28.7	7.1	9,070	7,815	6,010	130
7.00-15	29x8-15	6.0-15			28.7	7.1	9,070	7,815	6,010	132
7.50-15		5.5-15			29.3	7.6	9,985	8,600	6,615	144
7.50-15		6.0-15			29.3	7.6	9,985	8,600	6,615	146

Tire Size	Alternative Size	Rim Size	Additional Pattern	LOC	Tire Dimensions [in]		Load Capacity [lbs]			Weight [lbs]
					Overall Diameter	Section Width	Static	Counterbalanced lift trucks up to 15 mph		
								Load Wheel	Steering Wheel	
7.50-15		6.5-15			29.3	7.6	9,985	8,600	6,615	147
8.25-15		5.5-15			31.8	8.1	11,815	10,175	7,825	193
8.25-15		6.5-15		•	31.8	8.1	12,145	10,470	8,045	196
28x9-15	225/75-15 (8.15-15)	7.0-15		•	27.2	8.9	9,985	8,600	6,615	139
250-15	250/70-15	7.0-15		•	28.0	8.9	12,145	10,460	8,045	149
250-15	250/70-15	7.5-15		•	28.0	9.4	12,145	10,460	8,045	157
300-15	315/70-15	8.0-15		•	32.0	10.0	14,980	12,895	9,920	240
355/50-15		9.75-15		•	28.0	11.2	14,575	12,545	9,645	195
355/65-15	32x12½-15 (350-15)	9.75-15		•	32.0	11.2	19,975	17,195	13,230	278
7.50-16		6.00F-16			29.6	8.1	10,240	8,820	6,780	151
9.00-20	270/95-20	6.5-20			38.3	8.7	14,980	11,905	9,920	270
9.00-20	270/95-20	7.0-20			38.3	8.7	14,980	11,905	9,920	274
10.00-20	290/95-20	6.5-20			39.8	9.8	16,225	12,895	10,750	333
10.00-20	290/95-20	7.5-20	Smooth		39.8	9.8	16,645	13,230	11,025	337
10.00-20	290/95-20	8.0-20			39.8	9.8	16,645	13,230	11,025	340
11.00-20	300/95-20	8.0-20			40.9	10.2	18,145	14,420	12,015	377
12.00-20	330/95-20	8.0-20	Smooth		42.9	10.2	20,975	16,665	13,890	443
12.00-20	330/95-20	8.5-20	Smooth		42.9	10.2	20,975	16,665	13,890	446
12.00-20	330/95-20	10.0-20			42.9	12.3	21,640	17,195	14,330	540
355/50-20		10.0-20	Smooth	•	32.8	12.2	22,970	19,775	15,210	247
12.00-24	335/95-24	8.5-24			46.5	11.6	22,310	17,725	14,770	565
12.00-24	335/95-24	10.0-24			46.5	11.6	24,965	19,840	16,535	574
14.00-24		10.0-24			52.2	13.0	30,800	24,470	20,395	847
16.00-25		11.25-25			56.9	16.1	41,610	33,070	27,560	1287

### SPECIAL COMPOUNDS AVAILABLE



### TREAD PATTERNS



# Five reasons to choose

## Pit Stop Line



### MAXIMUM VALUE

Choosing Pit Stop Line means never replacing tires too early and always being in control of tire spend.



### MAXIMUM UPTIME

Pit Stop Line tires are built to perform and last. Premium design, construction and compounding increase productivity.



### ENHANCED SAFETY

Choosing Pit Stop Line tires means never replacing tires too late, protecting operators and machines.



### REDUCED IMPACT

Choosing Pit Stop Line tires means using fewer tires and reducing carbon footprint.



### SERVICE MADE EASY

Choosing Pit Stop Line tires means having plenty of time to schedule replacement at the right time.



TRELLEBORG