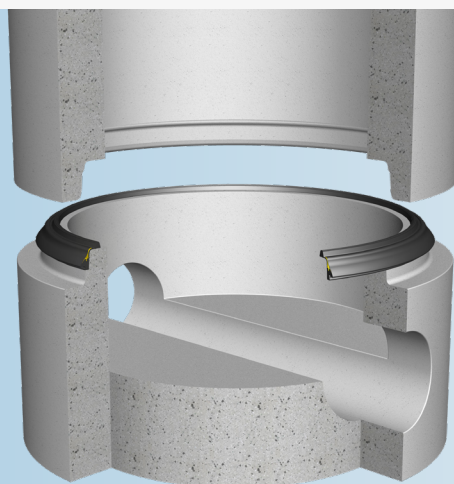


Trelleborg 171 Pre-Lube Load Distributor Seal

**Pre-lubricated seal
with load distribution
for concrete manholes**



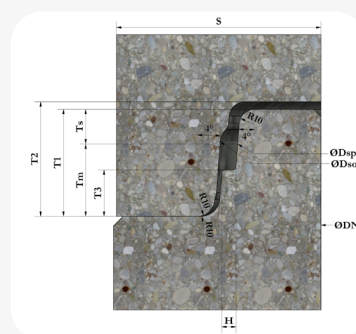
KEY FEATURES & BENEFITS

- Easy to center during jointing
- Load distribution element prevents concrete to concrete contact
- Facilitates minimal jointing force

SEAL DESIGN AND FUNCTION

The Trelleborg 171 has been designed to provide optimized contact and sealing pressure. This ensures superb joint security.

The pre-lubricated seal ensures jointing force is minimized at all combinations of joint tolerance.



DIMENSIONS TABLE

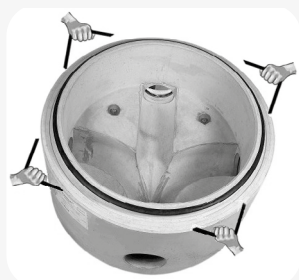
DN	DSP	DSO	T1	T2	TM	TS	S	H
800	890 ±2	913 ±1	65	70	39	26	120	8
1000	1090 ±2	1113 ±1	65	70	39	26	120	8
1200	1300 ±3	1327 ±1	75	80	43	32	135	9
1500	1620 ±3.5	1652 ±1.5	85	90	49	36	150	11

Pre-lubrication also eliminates the dangerous practice of applying lubricant to the socket of suspended manhole units. This enables a safe working environment.

JOINT ASSEMBLY



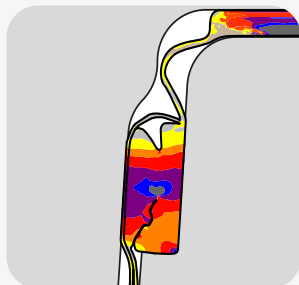
Stretch the seal onto the spigot and position against the shoulder.



Equalize the stress in the seal by lifting and releasing at a few points. The seal must sit evenly against the spigot shoulder all around the manhole. Lubrication of the socket or spigot is not required.



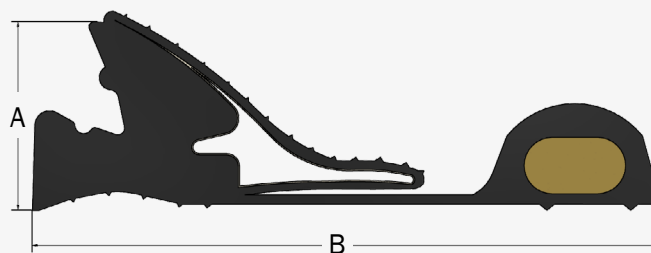
Centre the joint and assemble. The final position of the seal in the manhole joint is shown. If re-joining is required, ensure the sliding skin is drawn back to the position as shown in the first picture.



When the manhole sections are assembled, the rubber sealing element is designed to deform. This creates pressure on both spigot and socket, ensuring a watertight seal.

SIZE CHART

A (mm)	B (mm)	Joint gap (mm)
21.0	72.7	11.5±1.5
24.4	78.0	13.5±2.0
29.1	87.6	16±2.5



APPROVALS

- CE-marking
- BSI "Kitemark"
- Benor

STANDARDS

- EN 681-1 WC
- QR 4060
- FBS-QR
- ISO 9001

MATERIAL

- Synthetic rubber (EPDM)
- Hardness 40+/-5 IRHD
- Protected against ozone

Proven quality:



TRELLEBORG

WWW.TRELLEBORG.COM/EN/SEALS-AND-PROFILES/