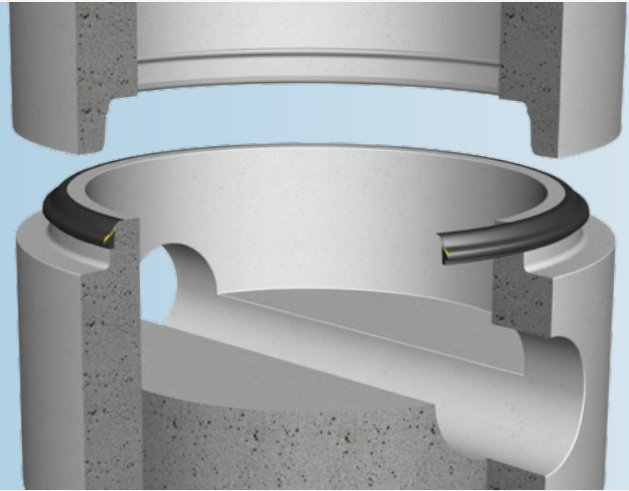


# Trelleborg 154 Pre-Lube Manhole Seal

Pre-lubricated seal for  
concrete manholes



## KEY FEATURES & BENEFITS

- **Easy to center during jointing**
- **Easy installation, no friction between rubber and concrete**
- **No lubrication under suspended loads**

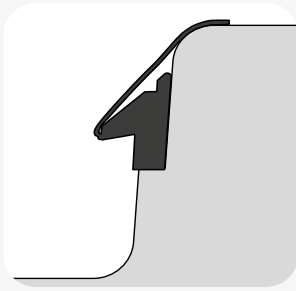
## SEAL DESIGN & FUNCTION

Trelleborg 154 is a pre-lubricated sliding seal that is stretched onto the spigot of the manhole. Additional lubricant is not required for joint assembly.

The seal is deformed when the spigot is inserted into the socket creating a positive seal under both internal and external pressure.

Lubricant has been applied between the sliding skin and the body of the seal. This design permits installation with very low force, as there is no friction between rubber and concrete. The special design of the joint and seal make the system easy to centre during jointing.

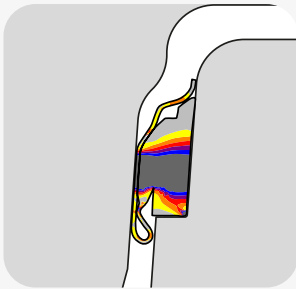
## JOINT ASSEMBLY



Stretch the seal onto the pipe spigot and position against the shoulder as shown. Equalise the tension by lifting and releasing the seal at several points.



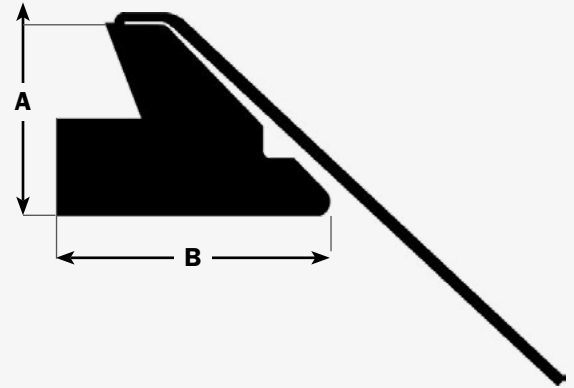
The seal must sit evenly against the spigot shoulder all around the manhole. Lubrication of the socket or spigot is not required.



Center the spigot into the socket and assemble.

## SIZE CHART

A (mm)	B (mm)
19	29.3
27	41.5
32	49.2



Manholes with Trelleborg 154 seals must be laid in accordance with applicable standards and regulations.

Please contact us for technical advice and joint design recommendations to meet your performance requirements.

## APPROVALS

- CE-marking
- BSI "Kitemark"

## STANDARDS

- EN 681-1
- ISO 9001

## MATERIAL

- Synthetic rubber (SBR or EPDM)
- Hardness 40+/-5 IRHD
- Protected against ozone
- Oil resistant grades are available on request

Authorities we cooperate with:



# TRELLEBORG

WWW.TRELLEBORG.COM/PIPE-SEALS