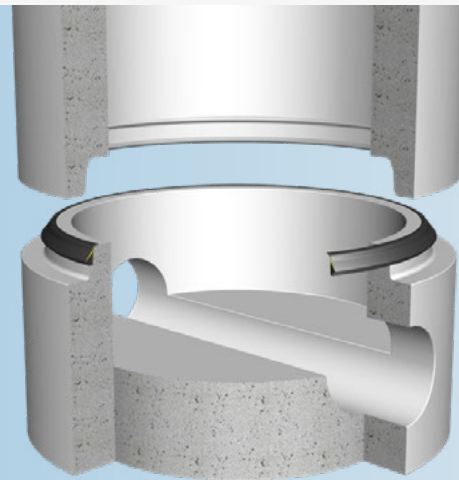


Trelleborg 118 Pre-Lube Manhole Seal

Pre-lubricated seal for
concrete manholes



KEY FEATURES & BENEFITS

- Easy to center during jointing
- Easy installation, no friction between rubber & concrete
- Enables safe working environments

SEAL DESIGN & FUNCTION

Trelleborg 118 is a pre-lubricated sliding seal that is stretched onto the spigot of the manhole. Additional lubricant is not required for joint assembly.

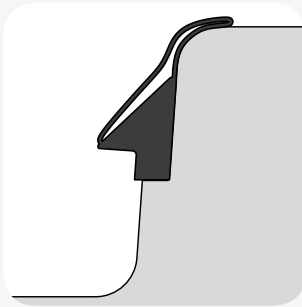
The seal is designed with a sliding mantle which is internally lubricated. The mantle is fully closed to ensure the lubricant stays in place.

During installation the thin mantle slides over the body of the seal. This design permits installation with low force, as there is no friction between rubber and concrete.

The special design of the joint and seal make the system easy to center during jointing.



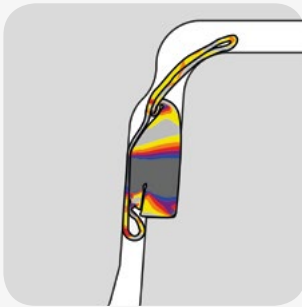
JOINT ASSEMBLY



Stretch the seal onto the spigot and position against the shoulder.



Equalize the stress in the seal by lifting and releasing at a few points. The seal must sit evenly against the spigot shoulder all around the manhole.

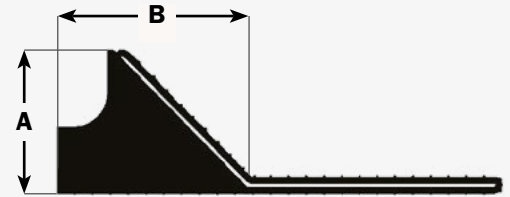


Lubrication of the socket or spigot is not required. Centre the joint and assemble. The position of the seal in the final manhole joint is shown.

If re-joining is required ensure the sliding skin is drawn back to position as shown in the first picture.

SIZE CHART

A (mm)	B (mm)	JOINT GAP
18.0	25.0	10.4±1.4
20.0	26.5	11.5±1.5
21.5	30.0	12.5±1.6
22.0	30.0	12.7±1.7
24.0	33.0	13.5±2.0
28.0	38.0	16.0±2.5



Please contact us for technical advice and joint design recommendations to meet your performance requirements.

Manholes and pipes with Trelleborg 118 shall always be laid in accordance with applicable standards and regulations.

APPROVALS

- CE-marking
- BSI "Kitemark"

STANDARDS

- EN 681-1 WC
- EN 681-1 WG
- ISO 9001

MATERIAL

- Synthetic SBR or EPDM rubber
- Hardness 40±5 IRHD
- Oil resistant grades are available on request

Authorities we cooperate with:




TRELLEBORG

WWW.TRELLEBORG.COM/PIPE-SEALS