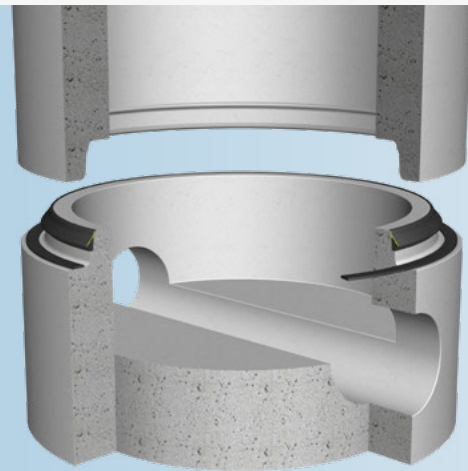


# Trelleborg 172 Load distributor

## Load distributor for manhole elements



### KEY FEATURES & BENEFITS

- **Load distribution element for manhole joints**
- **Preformed for easy positioning and installation**
- **Prevents concrete to concrete – contact and point loading**

### SEAL DESIGN & FUNCTION

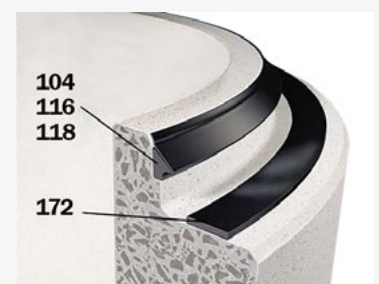
Trelleborg 172 Load distributor is designed for manhole systems in accordance with DIN 4034-1.

It is a load distribution element that is placed on the outer spigot end face of the manhole components in addition to the sealing ring.

The elastomeric strip compensates for any unevenness between the load bearing surfaces of the manhole components, distributing the vertical load and preventing concrete to concrete contact which could lead to point loading and structural failure.

For safe and easy installation of manhole systems Trelleborg Pipe Seals offer Trelleborg 104 Delta Seal, Trelleborg 116 Pre-Lube Manhole Seal and Trelleborg 118 sealing systems which can be used in conjunction with the Trelleborg 172 Load distributor element.

The Trelleborg 172 Load distributor is also recommended to be used with the Trelleborg 160 integrated manhole sealing system.



## JOINT ASSEMBLY

Ensure the surfaces of the manhole components are clean and free from damage.

Take the Trelleborg 172 Load distributor from the packaging, unroll and place on the outer spigot and face as shown above. Install the sealing ring onto the spigot, and joint as normal.



## SIZE CHART

DN
DN 800
DN 1000
DN 1200
DN 1500
DN 2000
DN 2500
DN 3000



## STANDARDS AND APPROVALS

- ISO 9001
- DIN 4034-1

## MATERIAL

- Plastomeric

Authorities we cooperate with:



**TRELLEBORG**

[WWW.TRELLEBORG.COM/PIPE-SEALS](http://WWW.TRELLEBORG.COM/PIPE-SEALS)