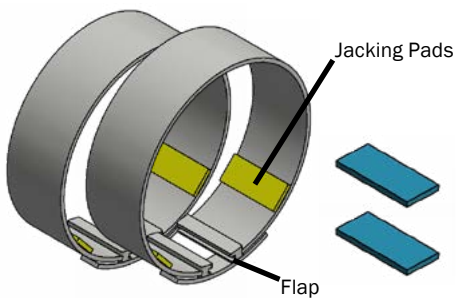


# L-Lock-P™ Liner End Seal

## Installation Guide

### COMPONENTS



**Stainless Steel  
Expansion Bands**

**Spacer**



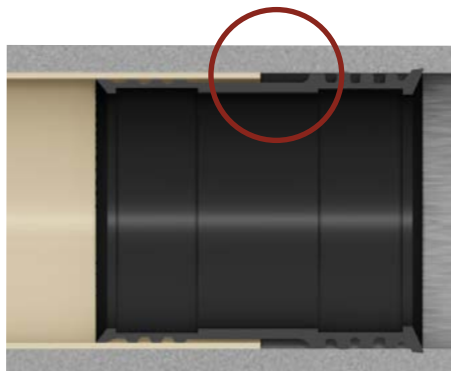
**Hydraulic  
Expansion Tool**



**Flexible Rubber Seal**

Range: 6" to 96" diameter pipes

### INSTALLATION PROCEDURE



#### STEP 1

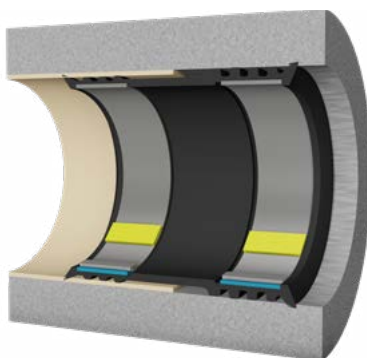
Place flexible rubber seal in pipe ensuring that the interface between the liner and the host pipe is centered within the sealing area.

Ensure that the thinner extremity of the flexible rubber seal is on the side of the liner.



#### STEP 2

Place expansion bands in designated band tracks. Flaps should be nominally centered underneath the expansion locations as shown above.





### STEP 3

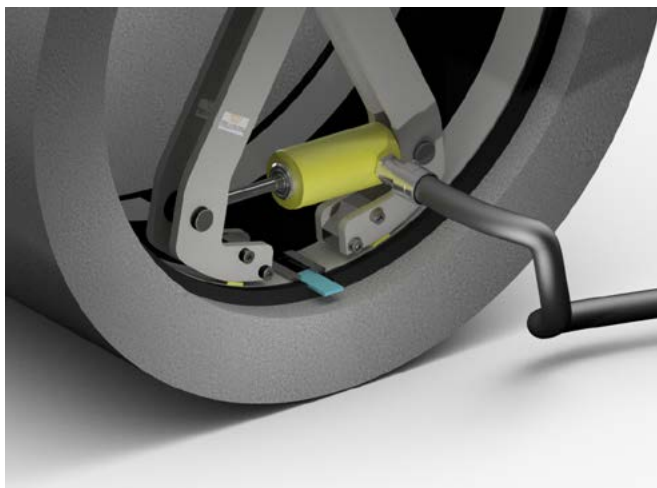
Insert expansion tool so that tips are located inside the jacking pads on the expansion band.

Expand tool to the nominal pressures stated in the table below.

**NOTE:**

Use caution when installing L-Lock-PTM on low pressure pipes. Contact Trelleborg with any questions.

Smaller diameters use a single expansion point, larger diameters will have multiple expansion points as indicated in the table below.



### STEP 4

Insert largest spacer that would fit in the designated slot and release expansion tool.

For multiple expansion points repeat procedure.

## EXPANSION BAND INSTALLATION

Band Segments	Min Diameter	Max Diameter	Install Pressure (PSI)
1	6"	15"	8000
1	16"	24"	4500
2	24"	47"	6000
3	48"	96"	8000



**TRELLEBORG**

[WWW.TRELLEBORG.COM/PIPE-SEALS](http://WWW.TRELLEBORG.COM/PIPE-SEALS)