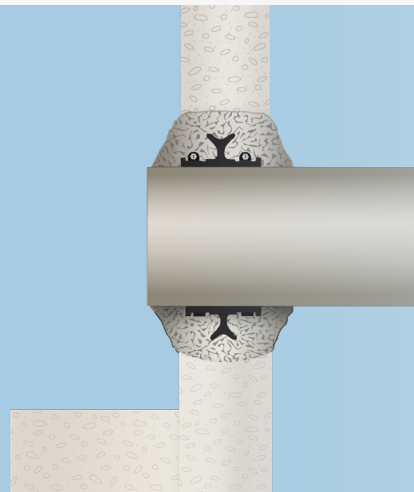


Waterstop Grouting Ring

Resilient rubber and stainless steel bands, combined with mortar creates a highly effective seal



KEY FEATURES & BENEFITS

- Establishes a watertight connection between manhole wall and pipe
- Installs in minutes saving time and money
- Great for re-establishing watertight connections at manhole after pipe bursting
- Can be used with most types of pipe

INSTALLATION INSTRUCTIONS

Fit the Waterstop Grouting Ring around the outside diameter of the pipe. Position it so that the ring will be in the middle of the structure's wall thickness.

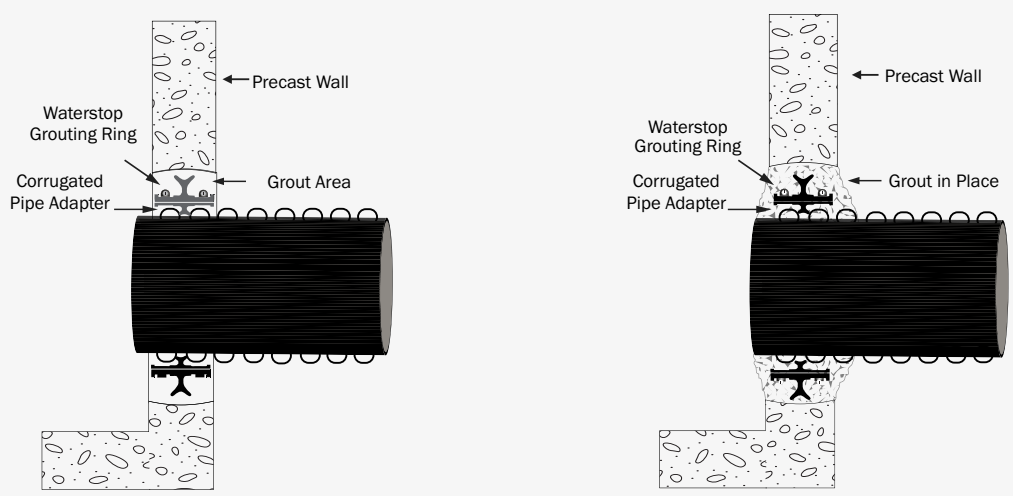
Note: When using corrugated pipe an adapter must be used. Please refer to the Corrugated Pipe Adapter Data Sheet.

Install the stainless steel pipe clamps around the groove of the grouting ring and tighten to 60 inch pounds using a T-Handle Torque Wrench (p/n 80090).

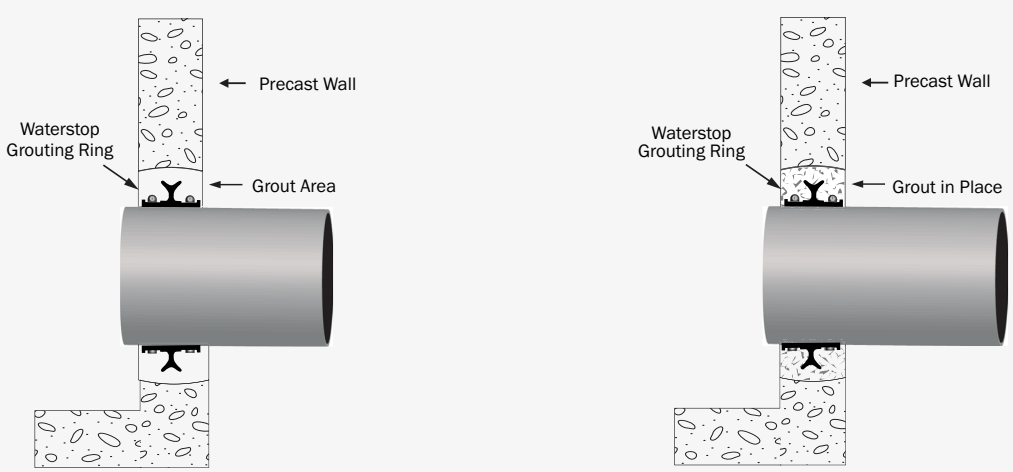
The pipe is now ready to be mortared or cast into the concrete structure. A high-strength, non-shrinking grout is recommended for mortaring (or brick and mortaring) pipe connections in place.



WATERSTOP INSTALLED ON CORRUGATED PIPE



WATERSTOP INSTALLED ON SMOOTH-WALL PIPE



NOTES Hole size should be a minimum of 4" larger than outside pipe diameter.
Waterstop gasket is 1³/₈" tall and 3" wide.



WWW.TRELLEBORG.COM/EN/SEALS-AND-PROFILES

Trelleborg Pipe Seals Milford Inc, 250 Elm Street Milford, New Hampshire 03055, USA, Tel: +1 603 673 8680, Fax: +1 603 673 7271
Trelleborg Pipe Seals B.V., P.O. Box 62, NL-8200 AB Lelystad, Telefon +31 320 2679-79, Fax +31 320 2679-80