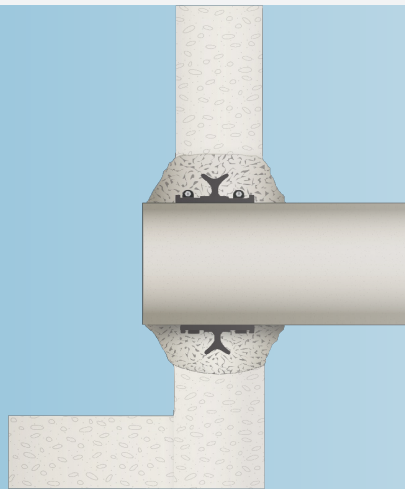


# Waterstop Grouting Ring

Resilient rubber and stainless steel bands, combined with mortar creates a highly effective seal



Establishes a watertight connection between manhole wall and pipe

Installs in minutes saving time and money

Great for re-establishing watertight connections at manhole after pipe bursting

Can be used with most types of pipe

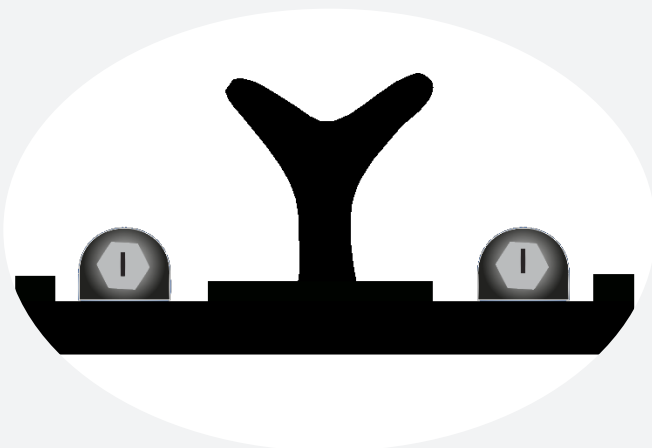
## INSTALLATION INSTRUCTIONS

Fit the Waterstop Grouting Ring around the outside diameter of the pipe. Position it so that the ring will be in the middle of the structure's wall thickness.

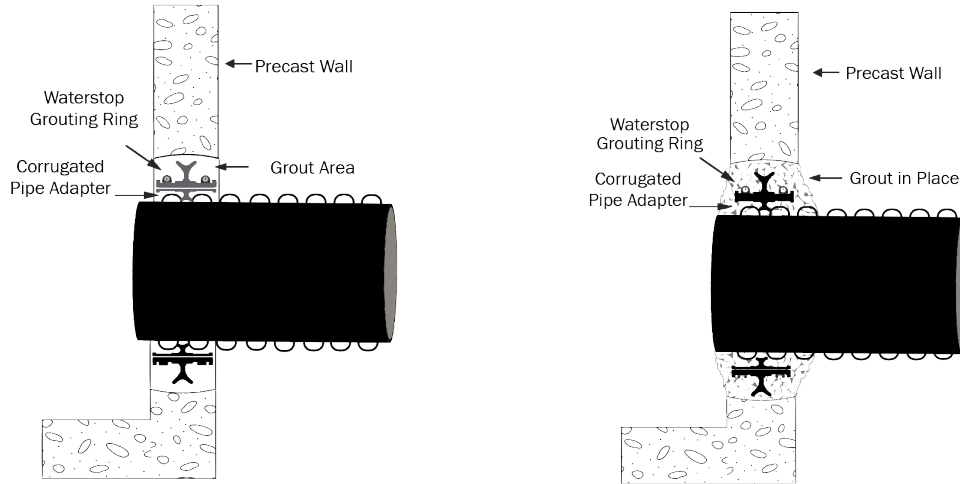
Note: When using corrugated pipe an adapter must be used. Please refer to the Corrugated Pipe Adapter Data Sheet.

Install the stainless steel pipe clamps around the groove of the grouting ring and tighten to 60 inch pounds using a T-Handle Torque Wrench (p/n 80090).

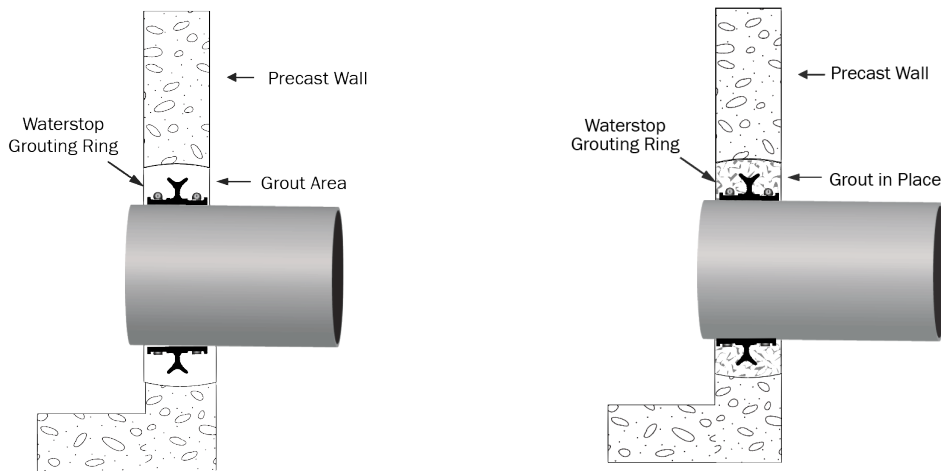
The pipe is now ready to be mortared or cast into the concrete structure. A high-strength, non-shrinking grout is recommended for mortaring (or brick and mortaring) pipe connections in place.



## WATERSTOP INSTALLED ON CORRUGATED PIPE



## WATERSTOP INSTALLED ON SMOOTH-WALL PIPE



### NOTES:

Hole size should be a minimum of 4" larger than outside pipe diameter.

Waterstop gasket is 1 3/8" tall and 3" wide.

