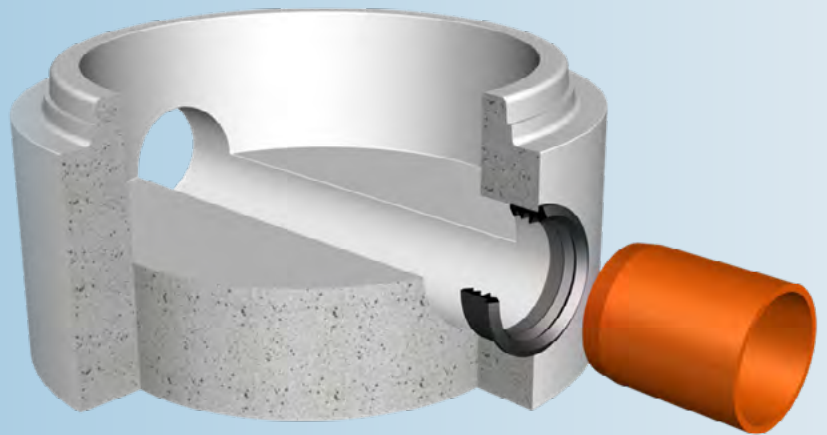


Trelleborg 910 Triple Lip Connector

Flexible connector for
pipes to manholes and
laterals to pipelines



KEY FEATURES & BENEFITS

- Suitable for use with prefabricated and core drilled holes
- The triple lip design allows ease of jointing
- Provides excellent resistance to transverse shear load

SEAL DESIGN & FUNCTION

Trelleborg 910 is a rubber seal for flexible connection of pipes to manholes and laterals to pipelines. It can be used with both prefabricated and core drilled holes.

The triple lip design allows ease of jointing and provides excellent resistance to transverse shear load, whilst allowing a high level of angular deflection in the joint.

The wide range of sizes available ensure the watertight connection of almost any pipe diameter and material.

Trelleborg 910 can also be used to connect PVC pipes to corrugated pipes or manholes.



JOINT ASSEMBLY



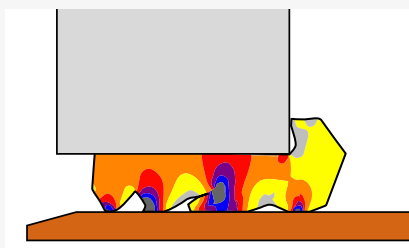
Press the seal into the hole. Do not use lubricant.



Chamfer the edge of the connecting pipe and lubricate it with Trelleborg 992 Pipe & Manhole Lube.



Center the end of the pipe and push it into the seal, the pipe end is flush with the inner wall.



When the pipe is pushed into the manhole the rubber sealing element is designed to deform. This creates pressure on both spigot and socket, ensuring a water-tight seal.

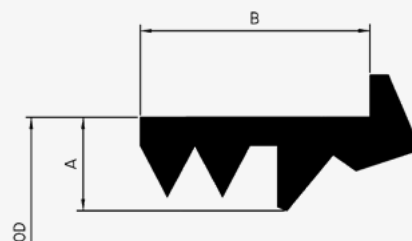
MATERIAL

- Synthetic rubber EPDM or SBR or NBR
- Hardness 40+/-5 IRHD or 55+/-5 IRHD

SIZE CHART

A (mm)	B (mm)	Joint gap
16.0	38.0	10.5±1.3
20.0*	50.0	13.0±1.8
23.0	51.0	15.0±1.9
26.6	49.2	17.3±2.0
32.0	49.4	20.8±2.4

* For EN 1401 PVC Pipe DN 110 mm the profile thickness is 21.5 mm and the joint gap is 14.0 ± 1.8 mm.



Please contact us for technical advice and joint design recommendations to meet your performance requirements.

Pipe connections with Trelleborg 910 shall always be laid in accordance with applicable standards and regulations.

STANDARDS & APPROVALS

- | | |
|------------------|---------------|
| ■ CE-marking | ■ Benor |
| ■ BSI "Kitemark" | ■ Swedcert |
| ■ Komo | ■ Ü |
| ■ ISO 9001 | ■ EN 681-1 WG |
| ■ EN 681-1 WC | ■ FBS-QR |
| ■ EN 682 GB | |

Authorities we cooperate with:



TRELLEBORG

WWW.TRELLEBORG.COM/PIPE-SEALS