

# 7" - 8" - 12"

## Multi-Connector



### INSTALLATION INSTRUCTIONS

#### CONNECTOR INSTALLATION FOR WEDGE KORBAND

Check to be sure the Korbant is properly located in Connector groove.

Inspect the inside surface of the cored hole. If there is porosity or wire-to-concrete separation, use patching or hydraulic cement to smooth the surface.

Insert Connector Assembly into hole with Wedge Expander at top of hole.

Position Connector so it is square to manhole both vertically and horizontally.

Wedge Expander for **7" & 8" holes should be tightened as follows:**

Stainless Steel Wedge - 8 ft. lbs.  
EX Plastic Wedge - 12 ft. lbs.

**12" holes should be tightened as follows:**

Stainless Steel Wedge - 12 ft. lbs.:  
Ex Plastic Wedge - 12-ft. lbs.

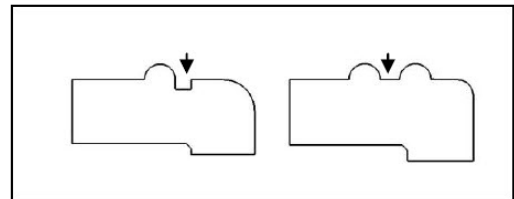
Retorquing is not required prior to shipment.

#### CONNECTOR INSTALLATION FOR TOGGLE KORBAND 7" & 8":

1. Insert the Korbant Expander Assembly (P/N 90225) under the Korbant Toggle and rotate the hex by hand to ensure that the Expander is properly engaged. (The 8" Toggle requires a foot extension (P/N 13808))
2. Insert the Connector and Expander into the cored or formed opening from inside the manhole.
3. Using a wrench, rotate the hex rod until the Korbant Toggle is expanded well past center and is firmly seated against the Connector.

#### PIPE INSTALLATION

1. To size the connector for the desired pipe O.D. Using a knife, carefully remove the un-needed section of the connector by cutting within the appropriate groove.



2. Be sure sealing area of pipe is smooth and free of defects. Repair if needed.
3. Center pipe in Connector opening. (Pipe must not rest on Connector Korbant)
4. Position the Pipe Clamp in the Connector's Pipe Clamp groove with the screw at the top.
5. Tighten the Pipe Clamp screw to 60 inch pounds with a T-handle Torque Wrench, P/N 80090.

Note: On minimum pipe O.D. installations, tension the rubber under the pipe clamp by lifting the rubber toward pipe clamp screw housing by hand. This will help prevent the rubber from wrinkling or folding over during tightening of hose clamp.

#### Caution:

Do not use impact wrench for installation.

All pipe stubs must be restrained.

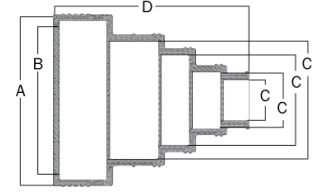
Vacuum testing should always be performed prior to backfill.

Check calibration of torque limiters monthly.

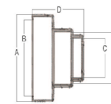
Torque limiters are available for connectors that can be used with cordless drills and hand or air ratchets. Call 800-626-2180 for information.

## SIZING CHART

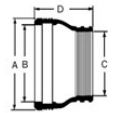
| P/N                                      | PIPE O.D. RANGE (INCHES)                         | HOLE SIZE RANGE (INCHES)                       | CONNECTOR DIMENSIONS (INCHES) |                          |      |       | PIPE CLAMP P/N |
|--|--|--|-------------------------------|--------------------------|------|-------|----------------|
|  |  |  | A                             | B                        | C    | D     |                |
| S106-7MWS<br>S106-7MT                    | 1.5 - 1.8<br>1.9 - 2.4<br>3.2 - 3.8<br>3.8 - 4.8 | 6.995 - 7.055                                  | 6.125                         | 1.6<br>2.3<br>3.6<br>4.8 | 7.8  | I-80  |                |
| S106-7WS<br>S106-7T                      | 3.5 - 4.5  | 6.995 - 7.055                                  | 6.125                         | 4.5                      | 6    | I-80  |                |
| S106-8WS<br>S106-8T                      | 5.1 - 5.9  | 7.995 - 8.055                                  | 7.125                         | 5.5                      | 8    | I-128 |                |
| S106-8SRWS<br>S106-8SRT                  | 4.2 - 4.8<br>6.2 - 6.4                           | 7.995 - 8.055                                  | 7.125                         | 4.3<br>6.4               | 7.5  | I-128 |                |
| S106-8MWP-EX                             | 1.5 - 1.8<br>1.9 - 2.4<br>3.2 - 3.8<br>3.8 - 4.8 | 7.995 - 8.055                                  | 6.83                          | 1.6<br>2.3<br>3.6<br>4.8 | 9.19 | I-80  |                |
| S106-12MWP-EX<br>S106-12MWS<br>S106-12MT | 3.5 - 4.8<br>6.2 - 6.9                           | 12.04 - 12.20<br>12.00 - 12.20<br>2.04 - 12.13 | 10.125                        | 4.5<br>6.5               | 8    | I-128 |                |



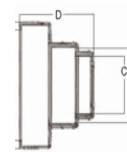
S106-7M and  
S106-8MWP-EX



S106-8SR



S106-7  
S106-8

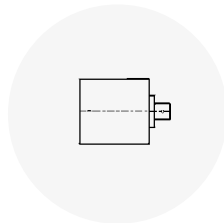


S106-12M

## INSTALLATION TOOLS

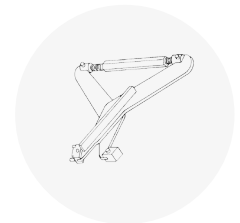
### For 7" and 8" Stainless Steel Wedge Korband

P/N 91440-8 Torque Limiter  
& ½" Socket Wrench  
(Torqued to 8 ft. lbs.)



### Toggle Korband

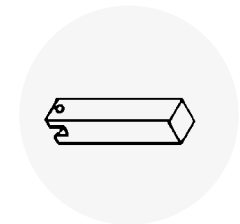
P/N 90225 Expander Assembly



### For S106-12MWP-EX, S106-12MWS and S106-8MWP-EX

P/N 91440-12 Torque Limiter  
& ½" Socket Wrench  
(Torqued to 12 ft. lbs.)

For 8" Toggle Korband  
P/N 13808 - 8" Foot Extension  
(use with P/N 90225)

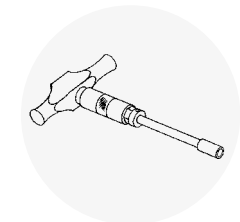


### For S106-12MT

P/N 91910 Hydraulic Jack

### Pipe Clamps

P/N 80090 T-Handle  
Torque Wrench



# TRELLEBORG

WWW.TRELLEBORG.COM/PIPE-SEALS