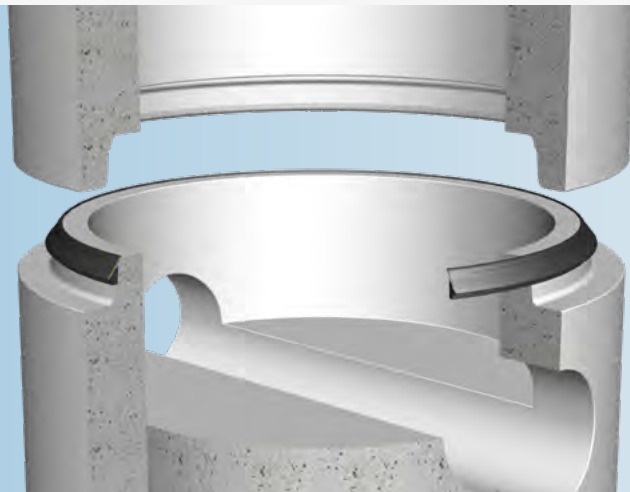


Trelleborg 116 Pre-Lube Manhole Seal

Pre-lubricated seal for
concrete manholes



KEY FEATURES & BENEFITS

- **easy to center during jointing**
- **easy installation, no friction between the rubber & concrete**
- **no lubrication under suspended loads**

SEAL DESIGN & FUNCTION

Trelleborg 116 is designed as a sliding seal to which lubricant has been applied between the sliding skin and the body of the seal. The tip of the skin is folded over and glued to the body of the seal to ensure the lubricant stays in place.

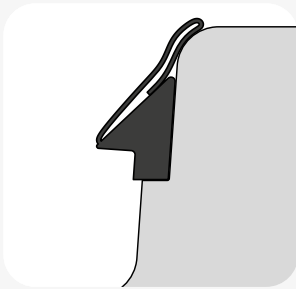
During installation, the adhesive joint releases allowing the lubricated skin to slide over the body of the seal.

This design permits installation with very low force, as there is no friction between rubber and concrete.

The special design of the joint and seal make the system easy to centre during jointing.



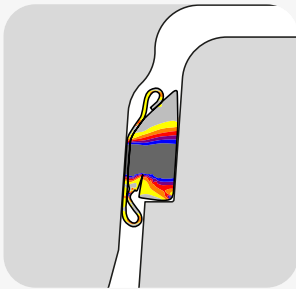
JOINT ASSEMBLY



Stretch the seal onto the spigot and position against the shoulder. Equalize the stress in the seal by lifting it at a few points. It is vital that the seal seats against the shoulder around the whole circumference of the manhole.



Centre the manhole sections and complete the joint. Depending on the joint design it may be possible to joint one side of the manhole, followed by the other.



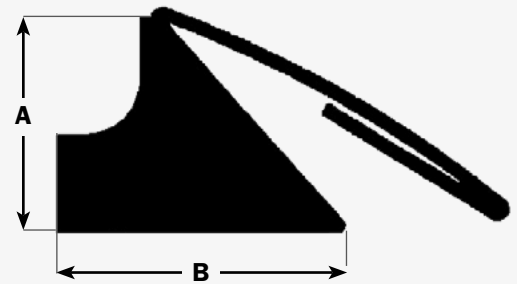
The position of the seal in an assembled manhole is shown on picture 3.



If re-joining is required ensure the sliding skin is drawn back to position as shown in picture 4.

SIZE CHART

A (mm)	B (mm)	Joint GAP
16	25.0	9.2±1.2
18	25.0	10.4±1.4
20	26.6	11.5±1.5
22	30.0	12.7±1.7
24	32.0	13.5±2.0
26	35.0	15.0±2.0
28	38.0	16.0±2.5
30	41.0	17.1±2.5



APPROVALS

- CE-marking
- BSI “Kitemark”
- Swedcert
- FBS QR 4060

STANDARDS

- EN 681-1
- ISO 9001

MATERIAL

- EPDM/NBR
- Hardness 40±5 IRHD
- Protected against ozone
- Oil resistant grades are available on request

Trelleborg proven quality:



TRELLEBORG

WWW.TRELLEBORG.COM/EN/SEALS-AND-PROFILES/