



Trelleborg is a world leader in engineered polymer solutions that seal, damp and protect critical applications in demanding environments. Its innovative solutions accelerate performance for customers in a sustainable way.

[WWW.TRELLEBORG.COM/EN/SEALING-PROFILES](http://WWW.TRELLEBORG.COM/EN/SEALING-PROFILES)



# Sealed with trust

**ARCHITECTURAL ALUMINUM SYSTEMS  
GLOBAL REACH & LOCAL PRESENCE.**





# A history of excellence

## IN ARCHITECTURAL ALUMINUM SOLUTIONS

Trelleborg’s sealing profiles operations is the global leader in providing glazing gaskets, weather seals and related glazing accessories. From demanding custom facade projects to standard curtain walls, storefronts or window applications, Trelleborg is the industry’s first choice in extruded polymer profiles. Over the years, we have created thousands of custom profiles utilizing in-house integrated tool and die capabilities. We also bring the ability to select and process a variety of appropriate compounds to produce end products that exceed the industry’s stringent specifications.

### CONTENTS

PROJECTS	3 – 4
CUSTOMIZED SYSTEM SOLUTIONS	5 - 6
TECHNICAL SUPPORT	7 – 8
A COMPLETE OFFERING	9 - 10
SUSTAINABILITY	11 - 12





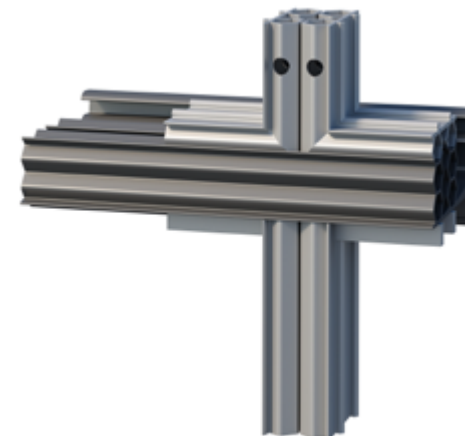
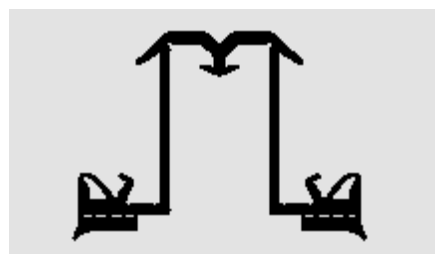
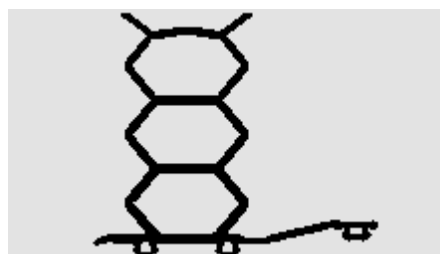
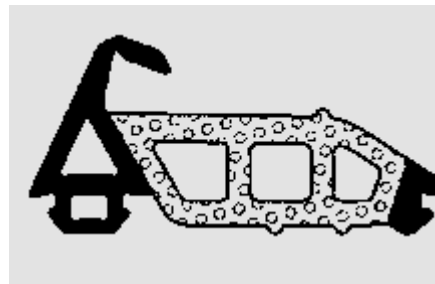
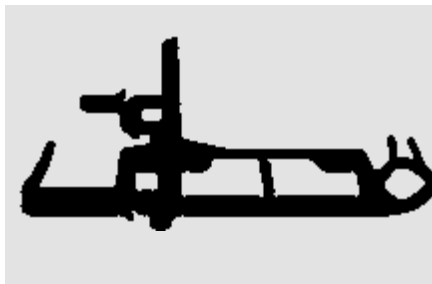
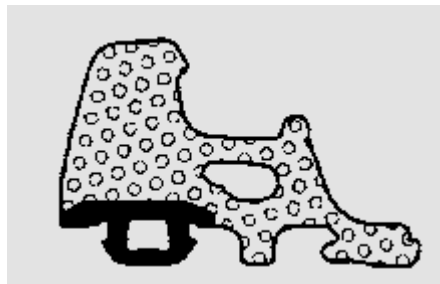
# Custom facade projects

Designers, manufacturers and installers of complex, project-specific facade systems rely on the application expertise, manufacturing excellence and customer focused project management offered by Trelleborg. Integrated engineering innovations are pushing the boundaries of building and facade design. Trelleborg is at the forefront of providing sustainable solutions that seal damp and protect in demanding environments.





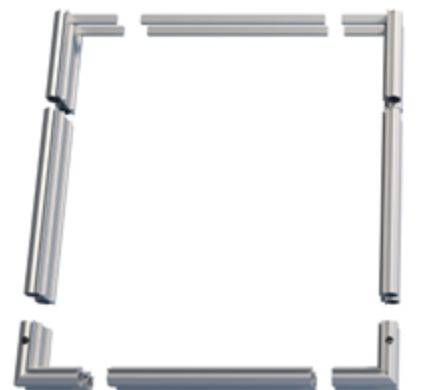
# Customized System Solutions



## DESIGN & MANUFACTURING CAPABILITIES.

- Moulded corners
- Spliced corners
- Spliced frames
- Vulcanized frames
- Extrudes profiles
- Co-extruded products including solid-cellular
- Injection moulded components
- Fully cellular gaskets
- Surface treatments

From unitised facade systems to geometrically challenging building designs, from high winds and temperature extremes to seismic conditions, Trelleborg offers a wide range of solutions that address the issues of Sustainability, production and performance.







# Technical support

Every customer depends on technical support from its suppliers and this truly is where Trelleborg stands out from the crowd. Our technical sales team, product realisation managers, design and development engineers are on hand to support our customers whenever required.

When customers are developing new products, they need to have a reliable partner with The relevant expertise to advise them on the correct material selection and design. They need a supplier who will react in a timely manner, who understands what the customer requires and be flexible enough to work with those requirements.





# A complete offering

**TECHNICAL EXPERTISE.**

- Collaborative design service
- Consultation
- CAD drawings
- Tool-making and development
- Product development
- Innovative engineering
- In-depth application and industry knowledge
- Extruded profile manufacturing

**DID YOU KKNOW.**

We offer more than 200 compounds and have three design centers.



**PRODUCT SUPPORT AND OPTIMIZATION.**

- Finite Element Analysis (FEA)
- Water jet sampling
- Rapid prototyping
- 3-D imaging
- Injection molding
- Fabrication including cutting and punching
- Custom packaging

**COMPREHENSIVE MATERIAL CHOICE.**

- Silicone
- Silicone compatible EPDM
- EPDM
- TPE
- Compounds with special requirements





# Sustainability in action

## BLUE DIMENSION™

At Trelleborg, we strive to make our customers successful by supplying smart and sustainable solutions that are cost-efficient and long-lasting. But there is an additional benefit to what we do. Our solutions have a positive impact on people, society and the world we live in. This is what we call Trelleborg's Blue Dimension™, and our ambition is to make the world as blue as possible.