

Kor-N-Seal® I Toggle Style Connector

Installation Instructions

CONNECTOR INSTALLATION

1. Check to be sure the Korband is properly located in Connector groove.
2. Inspect the inside surface of the cored/formed hole. If there is porosity or wire-to-concrete separation, use patching or hydraulic cement to smooth the surface.
3. Insert Connector Assembly into hole with "V" of the Korband at the top.
4. Insert the Hydraulic Jack into the Korband in a vertical position. Take up any slack in the jack ram. Make sure the "V" of the toggle is cradled in the "V" of the jack ram.
5. Align the Connector Assembly perpendicular to the horizontal and vertical plane of the opening. The Korband must be located within the wall of the hole.
6. Activate the Hydraulic Jack until the "V" of the toggle begins to expand radially. The gauge on the jack must reach a minimum pressure of 1500 psi.
7. After toggle passes center, the pressure reduces. Continue pumping until gauge reaches 2000 psi. Visually inspect the toggle to make sure it has gone over center.



PIPE INSTALLATION

1. Be sure sealing area of pipe is smooth and free of defects. Repair if needed.
2. Center pipe in Connector opening. (Pipe must not rest on Connector Korband)
3. Position the Pipe Clamp in the Connector's Pipe Clamp groove with the screw at the top.
4. Tighten the Pipe Clamp screw to 60 inch pounds with a T-handle Torque Wrench, P/N 80090.

Note: On minimum pipe O. D. installations, tension the rubber under the pipe clamp by lifting the rubber toward pipe clamp screw housing by hand. This will help prevent the rubber from wrinkling or folding over during tightening of hose clamp. Application of a very small amount pipe lube on the pipe clamp track will allow the pipe clamp to slide on the rubber and improve the performance of the hose clamp. Make sure to torque all screw locations on the pipe clamps.

Using Corrugated Pipe:

Adapters are required when using Corrugated Pipe. Refer to the Corrugated Pipe Adapter Data Sheet for details.

Note if Vacuum Testing

Testing should be done prior to backfilling so that leaks can be easily located and repaired.

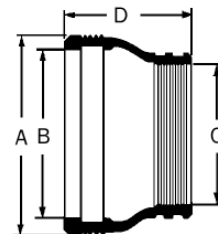
All lift holes need to be plugged with a nonshrinking mortar.

Plug all pipes entering the manhole, taking care to securely brace the pipes and plugs.

Kor-N-Seal® I Toggle Style Connector

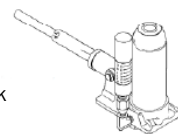
SIZING CHART

Model Number	Pipe O.D. Range (inches)	Hole Size Range (inches)	Connector Dimensions (inches)				Pipe Clamp P/N
			A	B	C	D	
S106-7T	3.50 - 4.50	6.995 - 7.055	6.125	4.50	6	I-80	
S106-8T	5.10 - 5.90	7.995 - 8.055	7.125	5.50	6	I-128	
S406-10AT	6.00 - 6.75	10.055 - 10.145	8.500	6.50	6	I-128	
S406-10T	7.50 - 8.40	10.055 - 10.145	8.500	8.50	6	I-180	
S406-10.5AT	6.00 - 6.75	10.525 - 10.615	9.000	6.50	6	I-128	
S406-10.5T	7.50 - 8.90	10.525 - 10.615	9.000	8.50	6	I-180	
S406-11BT	6.00 - 7.00	11.040 - 11.125	9.500	6.60	6	I-180	
S406-11AT	7.50 - 9.00	11.040 - 11.125	9.500	8.00	6	I-128	
S406-12CT	6.00 - 7.00	12.040 - 12.130	10.625	6.50	6	I-128	
S406-12BT	6.25 - 7.50	12.040 - 12.130	10.625	7.00	6	I-128	
S406-12AT	7.50 - 9.00	12.040 - 12.130	10.625	8.50	6	I-180	
S406-12T	9.00 - 10.50	12.040 - 12.130	10.625	10.00	6	I-180	
S106-12BT	5.75 - 7.00	12.040 - 12.130	10.625	6.50	8	I-128	
S106-12AT	7.00 - 8.50	12.040 - 12.130	10.625	8.00	8	I-180	
S106-12T	8.25 - 9.75	12.040 - 12.130	10.625	9.25	8	I-180	
S106-14AT	9.50 - 11.25	14.025 - 14.115	12.250	10.50	8	I-190	
S106-16BT	9.50 - 11.25	15.975 - 16.070	14.625	10.50	8	I-190	
S106-16AT	11.25 - 13.00	15.975 - 16.070	14.625	12.25	8	I-218	
S106-16T	13.00 - 14.50	15.975 - 16.070	14.625	14.00	8	I-242	



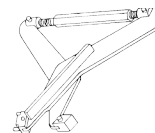
Installation Tools:

For connector sizes 10-16": Hydraulic Jack Assembly P/N 91910



Installation Tools:

For the S106-7T: Expander Assembly P/N 90225



TRELLEBORG

WWW.TRELLEBORG.COM/PIPE-SEALS