

# Rollin<sup>®</sup> Type100

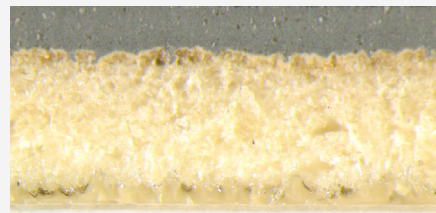
## Key performance

- Consistent throw length, uniform nip pressure, easy washup
- The best adhesive in the market to avoid creeping and lifting
- Clean and easy removal from the cylinder
- Improved blanket lifetime

## MAIN APPLICATION

Business Forms, Labels

**Rollin Type100 available in multiple ply type and multiple thickness.**



**Rollin Type100**



## The product at a glance

<b>INK COMPATIBILITY</b>	Conventional
<b>PRINTING SURFACE COLOUR</b>	Grey
<b>THICKNESS (mm)</b>	0,86-0,90; 0,94-0,98; 1,02-1,06
<b>AVERAGE LOAD VALUE N/cm<sup>2</sup> @ 0,23 mm Indentation</b>	250
<b>SURFACE ROUGHNESS (Ra micron)</b>	1,2/2,2
<b>ADDITIONAL INFORMATION</b>	
<b>APPLICATIONS</b>	ADHESIVE

**FOR ANY FURTHER DETAILS AND FOR A QUOTATION  
PLEASE REFER TO YOUR SALES MANAGER  
OR EMAIL US AT: [printingsm@trelleborg.com](mailto:printingsm@trelleborg.com)**