



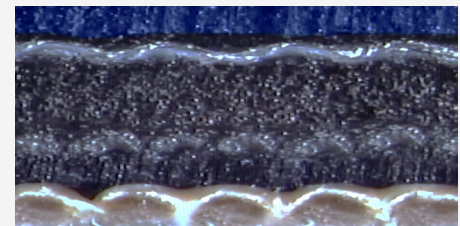
### Key Performance

- Blanket available in Asia Pacific
- Conventional inks compatibility
- Ideal for commercial sheetfed applications and packaging
- Resistance to frequent format changes
- Provides quick release
- High smash resistance

### MAIN APPLICATION

Sheetfed, Packaging

**Printec 800 is available in 3 ply, 1,96 mm thickness**



**Printec 800**

### ✓ The product at a glance

<b>INK COMPATIBILITY</b>	Conventional
<b>THICKNESS (mm)</b>	1.96
<b>PRINTING SURFACE COLOUR</b>	Blue
<b>AVERAGE LOAD VALUE N/cm2 @ 0,23 mm Indentation</b>	240
<b>SURFACE ROUGHNESS (Ra micron)</b>	1,0
<b>ELONGATION (%)</b>	<0,9
<b>TENSILE STRENGTHS (N/mm)</b>	>60
<b>WATER &amp; SOLVENT PROTECTION</b>	No
<b>ADDITIONAL INFORMATION</b>	
<b>APPLICATIONS</b>	Commercial Sheetfed and Packaging

**FOR ANY FURTHER DETAILS AND FOR A QUOTATION  
PLEASE REFER TO YOUR SALES MANAGER  
OR EMAIL US AT: [printingsm@trelleborg.com](mailto:printingsm@trelleborg.com)**