



Rollin[®] Type150

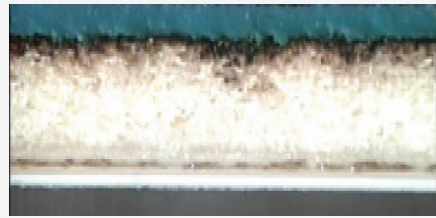
Key performance

- Consistent throw length, uniform nip pressure, easy washup
- The best adhesive in the market to avoid creeping and lifting
- Clean and easy removal from the cylinder
- Improved blanket lifetime

MAIN APPLICATION

Business Forms, labels

Rollin Type150 available in multiple ply type and multiple thickness.



Rollin Type150

✓ The product at a glance

| | |
|--|---------------------------------|
| INK COMPATIBILITY | UV |
| PRINTING SURFACE COLOUR | Light Blue |
| THICKNESS (mm) | 0,90-0,94; 0,98-1,00; 1,04-1,06 |
| AVERAGE LOAD VALUE N/cm² @ 0,23 mm Indentation | 250 |
| SURFACE ROUGHNESS (Ra micron) | 1,2/2,2 |
| ADDITIONAL INFORMATION | |
| APPLICATIONS | ADHESIVE |

**FOR ANY FURTHER DETAILS AND FOR A QUOTATION
PLEASE REFER TO YOUR SALES MANAGER
OR EMAIL US AT: printingsm@trelleborg.com**