

# Printec® 3115

## Pre-press advantages

- Knock-out areas without strings
- Fast and accurate cad cutting
- Easy to strip with clear and visible cut lines
- Easy to be handled and re-used

## Press room advantages

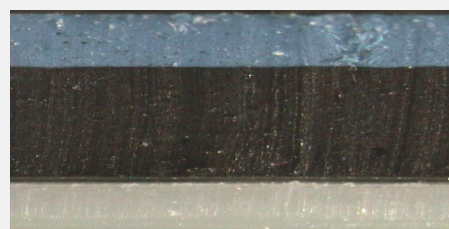
- No fabrics pattern
- Reduced back trapping
- Softer surface and reduced hardness
- Consistent coating transfer over long runs

## MAIN APPLICATION

### Coating

**Printec 3115: rubber-surface new coating plate"**

**No fabrics**



## The product at a glance

COMPATIBILITY	Aqueous and UV coatings
PRINTING SURFACE COLOUR	Blue
SURFACE	Rubber
SURFACE ROUGHNESS (Ra micron)	0,6
NOMINAL THICKNESS*	1,15 mm (0,045") +/- 0,05 mm (0,0002").
CARRIER	Polyester
CARRIER THICKNESS	0,35 mm (0,014")
CUTTING DEPTH	0,80 mm (0,031")
<b>ADDITIONAL INFORMATION</b>	
CUTTING ADVISE	CAD cutting into the mylar might reduce mechanical properties of the coating plate

**FOR ANY FURTHER DETAILS AND FOR A QUOTATION  
PLEASE REFER TO YOUR SALES MANAGER  
OR EMAIL US AT: [printing@trelleborg.com](mailto:printing@trelleborg.com)**

# Printec® 3135

## Pre-press advantages

- Knock-out areas without strings
- Fast and accurate cad cutting
- Easy to strip with clear and visible cut lines
- Easy to be handled and re-used

## Press room advantages

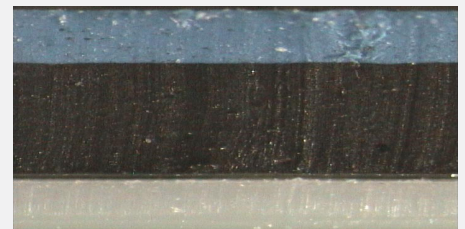
- No fabrics pattern
- Reduced back trapping
- Softer surface and reduced hardness
- Consistent coating transfer over long runs

## MAIN APPLICATION

### Coating

**Printec 3135: rubber-surface new coating plate.**

**No fabrics**



## The product at a glance

COMPATIBILITY	Aqueous and UV coatings
PRINTING SURFACE COLOUR	Blue
SURFACE	Rubber
SURFACE ROUGHNESS (Ra micron)	0,6
NOMINAL THICKNESS*	1,35 mm (0,053") +/- 0,05 mm (0,0002")
CARRIER	Polyester
CARRIER THICKNESS	0,35 mm (0,014")
CUTTING DEPTH	1,00 mm (0,039")
<b>ADDITIONAL INFORMATION</b>	
CUTTING ADVISE	CAD cutting into the mylar might reduce mechanical properties of the coating plate

**FOR ANY FURTHER DETAILS AND FOR A QUOTATION  
PLEASE REFER TO YOUR SALES MANAGER  
OR EMAIL US AT: [printingsm@trelleborg.com](mailto:printingsm@trelleborg.com)**