

# Rollin® Compak

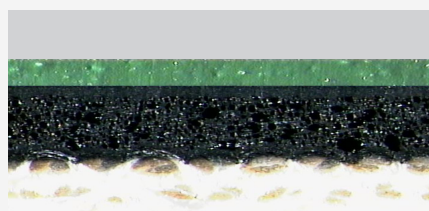
## Key performance

- High printing quality
- Higher paper smash resistance
- Easy blanket set up on machine
- High compressibility
- Suitable for packaging printing

## MAIN APPLICATION

Commercial Sheetfed,  
Packaging

**Rollin Compak is available in  
1.95 mm thickness, 3-ply**



**Rollin Compak**



## The product at a glance

<b>INK COMPATIBILITY</b>	Hybrid
<b>PRINTING SURFACE COLOUR</b>	Dark Green
<b>PRINTING SURFACE FINISH</b>	Micro buffed polished
<b>THICKNESS (mm)</b>	1,95
<b>AVERAGE LOAD VALUE N/cm<sup>2</sup> @ 0,23 mm Indentation</b>	250
<b>SURFACE ROUGHNESS (Ra micron)</b>	0,6
<b>ELONGATION (%)</b>	<0,9
<b>TENSILE STRENGTHS (N/mm)</b>	>60
<b>WATER &amp; SOLVENT PROTECTION</b>	No

**FOR ANY FURTHER DETAILS AND FOR A QUOTATION  
PLEASE REFER TO YOUR SALES MANAGER  
OR EMAIL US AT: [printing@trelleborg.com](mailto:printing@trelleborg.com)**

# Rollin<sup>®</sup> Peak

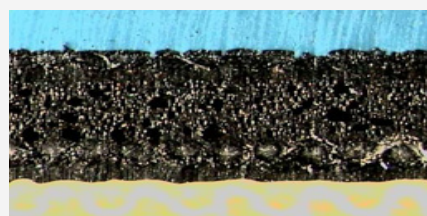
## Key performance

- Very good half tone reproduction and overall printing quality
- Proper shock mark absorption
- Excellent paper smash resistance
- Reliable commercial sheetfed performer

## MAIN APPLICATION

Commercial Sheetfed,  
Packaging

**Rollin Peak is available in 3 ply,  
1,95 mm thickness.**



**Rollin Peak**



## The product at a glance

<b>INK COMPATIBILITY</b>	Hybrid
<b>PRINTING SURFACE COLOUR</b>	Blue
<b>THICKNESS (mm)</b>	1,95
<b>AVERAGE LOAD VALUE N/cm<sup>2</sup> @ 0,23 mm Indentation</b>	250
<b>SURFACE ROUGHNESS (Ra micron)</b>	1,0
<b>ELONGATION (%)</b>	<0,9
<b>TENSILE STRENGTHS (N/mm)</b>	>60
<b>WATER &amp; SOLVENT PROTECTION</b>	No
<b>ADDITIONAL INFORMATION</b>	
<b>APPLICATIONS</b>	All-round sheetfed blanket

**FOR ANY FURTHER DETAILS AND FOR A QUOTATION  
PLEASE REFER TO YOUR SALES MANAGER  
OR EMAIL US AT: [printing@trelleborg.com](mailto:printing@trelleborg.com)**

# Rollin® Suntech

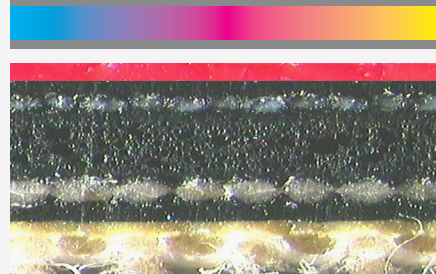
## Key performance

- Specifically designed for the latest UV applications (LE/HUV, LED UV)
- Excellent printing quality (solids and half tone reproduction)
- Very good ink release
- Avoid ink back-trapping
- Implements all benefits of the Dynatech System:
  - . Excellent smash and edge marks resistance
  - . Better vibration absorption

## MAIN APPLICATION

Commercial Sheetfed,  
Packaging

**Rollin Suntech is available in  
1.95 mm thickness, 3-ply**



**Rollin Suntech**



## The product at a glance

<b>INK COMPATIBILITY</b>	UV
<b>PRINTING SURFACE COLOUR</b>	Red
<b>PRINTING SURFACE FINISH</b>	Micro buffed polished
<b>THICKNESS (mm)</b>	1,95
<b>AVERAGE LOAD VALUE N/cm<sup>2</sup> @ 0,23 mm Indentation</b>	250
<b>SURFACE ROUGHNESS (Ra micron)</b>	0,8
<b>ELONGATION (%)</b>	<0,9
<b>TENSILE STRENGTHS (N/mm)</b>	>60
<b>WATER &amp; SOLVENT PROTECTION</b>	No
<b>ADDITIONAL INFORMATION</b>	
<b>ADDED FEATURES</b>	Dynatech System

**FOR ANY FURTHER DETAILS AND FOR A QUOTATION  
PLEASE REFER TO YOUR SALES MANAGER  
OR EMAIL US AT: [printing@trelleborg.com](mailto:printing@trelleborg.com)**

# Rollin® UV-E

## Key performance

- Specifically designed for UV applications
- Excellent half tone reproduction
- Excellent smash resistance
- Suitable for packaging and metal decorating applications
- Sticky back blanket

## MAIN APPLICATION

Commercial Sheetfed,  
Packaging, Metal Decorating

**Rollin UV-E available in 3 ply,  
1,70/1,95 mm thickness.**



**Rollin UV-E**



## The product at a glance

<b>INK COMPATIBILITY</b>	UV
<b>PRINTING SURFACE COLOUR</b>	Light Green
<b>THICKNESS (mm)</b>	1,70/1,95
<b>AVERAGE LOAD VALUE N/cm<sup>2</sup> @ 0,23 mm Indentation</b>	250
<b>SURFACE ROUGHNESS (Ra micron)</b>	0,8
<b>ELONGATION (%)</b>	<0,9
<b>TENSILE STRENGTHS (N/mm)</b>	>60
<b>WATER &amp; SOLVENT PROTECTION</b>	No
<b>ADDITIONAL INFORMATION</b>	
<b>CARCASS CONSTRUCTION</b>	Multi-ply fabric carcass is combined with the compressible layer for an excellent smash resistance

**FOR ANY FURTHER DETAILS AND FOR A QUOTATION  
PLEASE REFER TO YOUR SALES MANAGER  
OR EMAIL US AT: [printing@trelleborg.com](mailto:printing@trelleborg.com)**

# Rollin® Metal UV

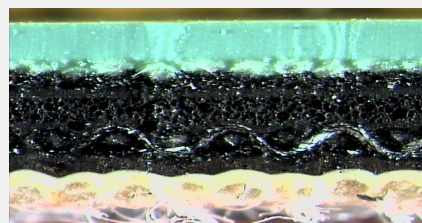
## Key performance

- Ideal for UV multi-colour presses
- Excellent half tone reproduction and ink transfer coverage
- Extreme quick release
- High UV chemical resistance

## MAIN APPLICATION

Metal Decorating,  
Packaging

**Rollin Metal UV is available in  
3 ply, 1,95 mm thickness.**



## The product at a glance

INK COMPATIBILITY	UV
PRINTING SURFACE COLOUR	Light Green
THICKNESS (mm)	1,95
AVERAGE LOAD VALUE N/cm <sup>2</sup> @ 0,23 mm Indentation	400
SURFACE ROUGHNESS (Ra micron)	0,8
ELONGATION (%)	<0,9
TENSILE STRENGTHS (N/mm)	>60
WATER & SOLVENT PROTECTION	No
<b>ADDITIONAL INFORMATION</b>	
DESIGN	Specifically designed for UV multi-colour presses

**FOR ANY FURTHER DETAILS AND FOR A QUOTATION  
PLEASE REFER TO YOUR SALES MANAGER  
OR EMAIL US AT: [printing@trelleborg.com](mailto:printing@trelleborg.com)**

# Rollin® Hi-Coat Plus 115

## Pre-press advantages

- High Shore A value (90)
- Fast and accurate cad cutting
- Easy to strip with clear and visible cut lines
- Easy to be handled and re-used

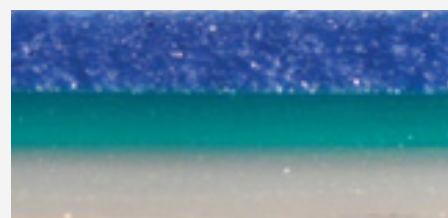
## Press room advantages

- No fabrics pattern
- Reduced back trapping
- Interchangeable with most polymer surfaced products without adjustment of packing or stripes
- Exceptional sharp lines on knock-out
- Consistent coating transfer over long runs

## MAIN APPLICATION

### Coating

**Rollin Hi-Coat Plus 115: polymer-surface new coating plate, no fabrics**



## The product at a glance

COMPATIBILITY	Aqueous and UV coatings
PRINTING SURFACE COLOUR	Blue
SURFACE	Polymer
SURFACE ROUGHNESS (Ra micron)	Cast
NOMINAL THICKNESS*	1,15 mm (0,045") +/- 0,02 mm (0,0007").
CARRIER	Polyester
CARRIER THICKNESS	0,35 mm (0,014")
CUTTING DEPTH	0,8 mm (0,031")
ADDITIONAL INFORMATION	
CUTTING ADVISE	CAD cutting into the mylar might reduce mechanical properties of the coating plate

**FOR ANY FURTHER DETAILS AND FOR A QUOTATION  
PLEASE REFER TO YOUR SALES MANAGER  
OR EMAIL US AT: [printing@trelleborg.com](mailto:printing@trelleborg.com)**



# Rollin® Hi-Coat Plus 135

## Pre-press advantages

- High Shore A value (90)
- Fast and accurate cad cutting
- Easy to strip with clear and visible cut lines
- Easy to be handled and re-used

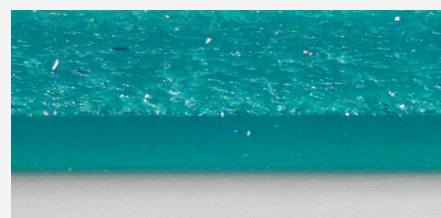
## Press room advantages

- No fabrics pattern
- Reduced back trapping
- Interchangeable with most polymer surfaced products without adjustment of packing or stripes
- Exceptional sharp lines on knock-out
- Consistent coating transfer over long runs

## MAIN APPLICATION

### Coating

**Rollin Hi-Coat Plus 135: polymer-surface new coating plate, no fabrics**



## The product at a glance

COMPATIBILITY	Aqueous and UV coatings
PRINTING SURFACE COLOUR	Blue
SURFACE	Polymer
SURFACE ROUGHNESS (Ra micron)	Cast
NOMINAL THICKNESS*	1,35 mm (0,053") +/- 0,02 mm (0,0007")
CARRIER	Polyester
CARRIER THICKNESS	0,35 mm (0,014")
CUTTING DEPTH	1,0 mm (0,039")
ADDITIONAL INFORMATION	
CUTTING ADVISE	CAD cutting into the mylar might reduce mechanical properties of the coating plate

**FOR ANY FURTHER DETAILS AND FOR A QUOTATION  
PLEASE REFER TO YOUR SALES MANAGER  
OR EMAIL US AT: [printing@trelleborg.com](mailto:printing@trelleborg.com)**

# Rollin® Hi-Coat Plus 195

## Pre-press advantages

- High Shore A value (90)
- Fast and accurate cad cutting
- Easy to strip with clear and visible cut lines
- Easy to be handled and re-used

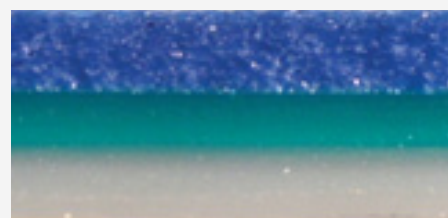
## Press room advantages

- No fabrics pattern
- Reduced back trapping
- Interchangeable with most polymer surfaced products without adjustment of packing or stripes
- Exceptional sharp lines on knock-out
- Consistent coating transfer over long runs

## MAIN APPLICATION

### Coating

**Rollin Hi-Coat Plus 195: polymer-surface new coating plate, no fabrics**



## The product at a glance

COMPATIBILITY	Aqueous and UV coatings
PRINTING SURFACE COLOUR	Blue
SURFACE	Polymer
SURFACE ROUGHNESS (Ra micron)	Cast
NOMINAL THICKNESS*	1,15 mm (0,045") +/- 0,02 mm (0,0007").
CARRIER	Polyester
CARRIER THICKNESS	0,35 mm (0,014")
CUTTING DEPTH	0,8 mm (0,031")
ADDITIONAL INFORMATION	
CUTTING ADVISE	CAD cutting into the mylar might reduce mechanical properties of the coating plate

**FOR ANY FURTHER DETAILS AND FOR A QUOTATION  
PLEASE REFER TO YOUR SALES MANAGER  
OR EMAIL US AT: [printing@trelleborg.com](mailto:printing@trelleborg.com)**



# Rollin® Hi-Coat 115

## Pre-press advantages

- Knock-out areas without strings
- Fast and accurate cad cutting
- Easy to strip with clear and visible cut lines
- Easy to be handled and re-used

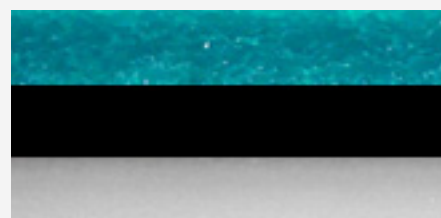
## Press room advantages

- No fabrics pattern
- Reduced back trapping
- Softer surface, and reduced hardness
- Consistent coating transfer over long runs

## MAIN APPLICATION

### Coating

**Rollin Hi-Coat 115 : rubber-surface  
new coating plate, no fabrics**



## The product at a glance

<b>COMPATIBILITY</b>	Aqueous and UV coatings
<b>PRINTING SURFACE COLOUR</b>	Blue
<b>SURFACE</b>	Micro buffed rubber face
<b>SURFACE ROUGHNESS (Ra micron)</b>	0,6 micron
<b>NOMINAL THICKNESS*</b>	1,15 mm (0,045") +/- 0,05 mm (0,0002").
<b>CARRIER</b>	Polyester
<b>CARRIER THICKNESS</b>	0,35 mm (0,014")
<b>CUTTING DEPTH</b>	0,8 mm (0,031")
<b>ADDITIONAL INFORMATION</b>	
<b>CUTTING ADVISE</b>	CAD cutting into the mylar might reduce mechanical properties of the coating plate

**FOR ANY FURTHER DETAILS AND FOR A QUOTATION  
PLEASE REFER TO YOUR SALES MANAGER  
OR EMAIL US AT: [printing@trelleborg.com](mailto:printing@trelleborg.com)**

# Rollin® Hi-Coat 135

## Pre-press advantages

- Knock-out areas without strings
- Fast and accurate cad cutting
- Easy to strip with clear and visible cut lines
- Easy to be handled and re-used

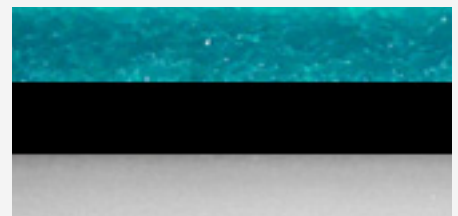
## Press room advantages

- No fabrics pattern
- Reduced back trapping
- Softer surface and reduced hardness
- Consistent coating transfer over long runs

## MAIN APPLICATION

### Coating

**Rollin Hi-Coat 135: rubber-surface  
new coating plate, no fabrics**



## The product at a glance

<b>COMPATIBILITY</b>	Aqueous and UV coatings
<b>PRINTING SURFACE COLOUR</b>	Blue
<b>SURFACE</b>	Micro buffed rubber face
<b>SURFACE ROUGHNESS (Ra micron)</b>	0,6 micron
<b>NOMINAL THICKNESS*</b>	1,35 mm (0,053") +/- 0,05 mm (0,0002").
<b>CARRIER</b>	Polyester
<b>CARRIER THICKNESS</b>	0,35 mm (0,014")
<b>CUTTING DEPTH</b>	1,0 mm (0,039")
<b>ADDITIONAL INFORMATION</b>	
<b>CUTTING ADVISE</b>	CAD cutting into the mylar might reduce mechanical properties of the coating plate

**FOR ANY FURTHER DETAILS AND FOR A QUOTATION  
PLEASE REFER TO YOUR SALES MANAGER  
OR EMAIL US AT: [printing@trelleborg.com](mailto:printing@trelleborg.com)**