

vulcan® Metal Evo

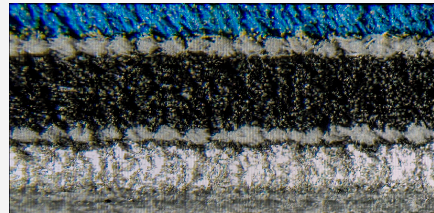
Key performance

- Ideal for 4-high tower design and satellites
- Better reproduction and print quality
- Faster reboundability for high performance and longer runs
- Improved smash resistance
- Low heat generation
- Optimized ink water transfer
- Field validated by leading newspaper printers
- Suitable for Waterless Presses

MAIN APPLICATION

Newspaper

Vulcan Metal Evo is available in 2-ply.



Vulcan Metal Evo



The product at a glance

INK COMPATIBILITY	Hybrid
THICKNESS (mm)	According to manufacturer drawing
PRINTING SURFACE COLOUR	Blue
AVERAGE LOAD VALUE N/cm² @ 0,23 mm Indentation	250
SURFACE ROUGHNESS (Ra micron)	1,2
METAL BASE	Stainless steel 0,2 mm
COMPRESSIBLE LAYER	Microspheres closed cells
PAPER FEEDING	Slightly positive
ADDITIONAL INFORMATION	
APPLICATIONS	Suitable for all kind of newspaper presses

**FOR ANY FURTHER DETAILS AND FOR A QUOTATION
PLEASE REFER TO YOUR SALES MANAGER
OR EMAIL US AT: printingsm@trelleborg.com**