



# vulcan<sup>®</sup> Eco

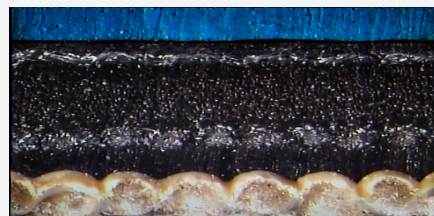
## Key performance

- Specifically designed for a wide range of applications in sheetfed printing and in metal decorating
- Suitable for high volumes printing
- Improved printing quality in tough conditions

## MAIN APPLICATION

Sheetfed Commercial & Packaging

**Vulcan Eco is available in 4 ply, 1,96 mm thickness**



**Vulcan Eco**

## ✓ The product at a glance

<b>INK COMPATIBILITY</b>	Hybrid
<b>PRINTING SURFACE COLOUR</b>	Blue
<b>THICKNESS (mm)</b>	1,96
<b>AVERAGE LOAD VALUE N/cm<sup>2</sup> @ 0,23 mm Indentation</b>	300
<b>SURFACE ROUGHNESS (Ra micron)</b>	1,0
<b>ELONGATION (%)</b>	<0,9
<b>TENSILE STRENGTH (N/mm)</b>	>59

**FOR ANY FURTHER DETAILS AND FOR A QUOTATION  
PLEASE REFER TO YOUR SALES MANAGER  
OR EMAIL US AT: [printingsm@trelleborg.com](mailto:printingsm@trelleborg.com)**