

# MBB Storage Tips

## MBB: Receival & Storage

How to stock the crates: **KEEP Horizontal**

**This is correct**

**Vertical position could damage the edge of the blankets**



## MBB: Receival & Storage

**NOTICE**  
If **TILTWATCH** is red **ALWAYS** accept shipment. Make note on **Bill of Lading**. Inspect for damage immediately.



## MBB: Receival & Storage



**These MBB has been damaged by a wrong transportation or storage**

## MBB: Box Opening

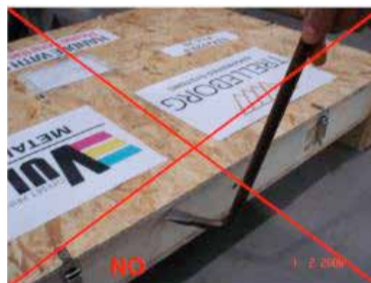
Open with care



## MBB: Box Opening

Open with care

**Rude opening tools can damage the blankets**



## MBB: Box Opening

Open with care



**These MBB has been damaged by a wrong box opening**

## MBB: Handling

How to avoid dents onto the metal

**YES, before bending**

**Only after bending!**

**NO, never**



## MBB: Handling

Handling MBB edges



The MBB edges are very sharp and dangerous:

**handle with anti-cut gloves**

## MBB: Bending

Leading and trailing edges need to be bended. An incorrect bending leads to unusable MBB.



## MBB: Mounting



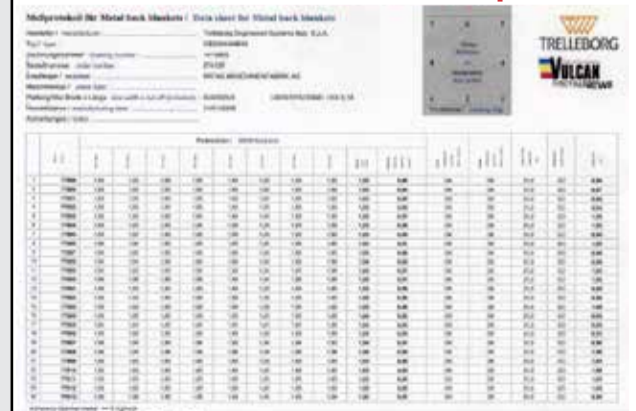
Useful information are engraved on the back of the leading edge (under request it is available in a different positions)

- LOGO Vulcan
- Blanket size
- Leading edge side
- **Blanket number**



## MBB: Data Sheet

Store the data sheet in a safe place



## MBB: Cleaning

- Respect the washing frequency
- Only use approved washing chemicals
- Clean the gap with CARE
- Automatic washing device must be set to a not excessive pressure
- The blanket is very strongly fixed to the steel plate but : **DO NOT EXPECT RUBBER TO BE AS STRONG AS STEEL TO:**
  - ABRASIONS
  - SOLVENTS