



# Rollin<sup>®</sup> Polycell Plus

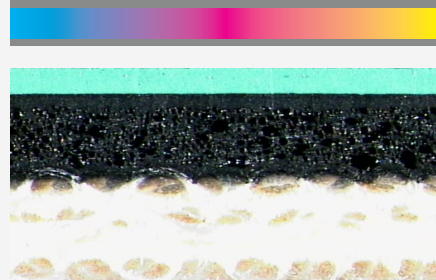
## Key performance

- Unique blanket design: compressible layer underneath the top compound
- High smash resistance
- Very soft and flexible blanket for easy mounting on press
- Implements all benefits of the Dynatech System:
  - Better vibration absorption
  - Less gears streaking marks
  - Higher paper smash resistance
  - Blanket consistency
  - Excellent reboundability

## MAIN APPLICATION

Sheetfed  
(Commercial & Packaging)

**Rollin Polycell is available in 3-ply, 1,96 mm thickness**



**Rollin Polycell Plus**



## The product at a glance

<b>INK COMPATIBILITY</b>	Hybrid
<b>PRINTING SURFACE COLOUR</b>	Green
<b>THICKNESS (mm)</b>	1,96
<b>AVERAGE LOAD VALUE N/cm<sup>2</sup> @ 0,23 mm Indentation</b>	250
<b>SURFACE ROUGHNESS (Ra micron)</b>	<0,9
<b>TENSILE STRENGTH (N/mm)</b>	>67
<b>WATER &amp; SOLVENT PROTECTION</b>	Yes
<b>ADDITIONAL INFORMATION</b>	
<b>ADVANCED TECHNOLOGY</b>	Dynatech System

**FOR ANY FURTHER DETAILS AND FOR A QUOTATION  
PLEASE REFER TO YOUR SALES MANAGER  
OR EMAIL US AT: [printingsm@trelleborg.com](mailto:printingsm@trelleborg.com)**