



Printec 574-B

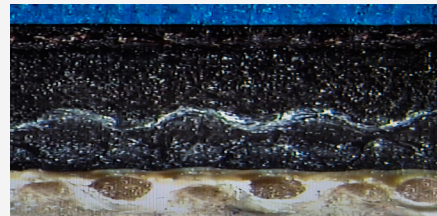
Key performance

- Specifically designed for high quality printing in sheetfed and large format packaging applications
- Hybrid printing face
- Low stretch high gauge stability to improve the blanket performance on the press
- Water solvent protection treatment of the bottom fabric to increase the durability

MAIN APPLICATION

Newspaper Coldset,
Commercial sheetfed

Printec 574-B is available in 4-ply, 1,96 mm thickness.



Printec 574-B



The product at a glance

INK COMPATIBILITY	Hybrid
THICKNESS (mm)	1.96
PRINTING SURFACE COLOUR	Blue
AVERAGE LOAD VALUE N/cm² @ 0,23 mm Indentation	250
SURFACE ROUGHNESS (Ra micron)	1,0
ELONGATION (%)	<0,8
TENSILE STRENGTHS (N/mm)	>75
WATER & SOLVENT PROTECTION	Yes
ADDITIONAL INFORMATION	
APPLICATIONS	Resilient compressible layer to provide excellent smash resistance. Premium choice

**FOR ANY FURTHER DETAILS AND FOR A QUOTATION
PLEASE REFER TO YOUR SALES MANAGER
OR EMAIL US AT: printingsm@trelleborg.com**