

# Rollin<sup>®</sup> Metro



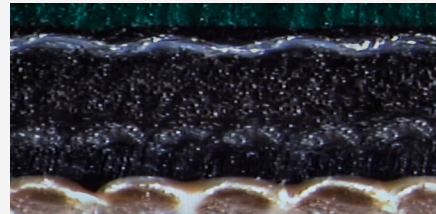
## Key performance

- Ideal for commercial applications
- Suitable also for metal decorating and packaging applications
- Superior blanket durability
- Very high print quality

## MAIN APPLICATION

Sheetfed, Packaging, Metal Decorating

**Rollin Metro is available in 3-ply, (1,95 mm) thickness.**



Rollin Metro

## ✓ The product at a glance

<b>INK COMPATIBILITY</b>	Conventional
<b>PRINTING SURFACE COLOUR</b>	Dark Green
<b>THICKNESS (mm)</b>	1,95
<b>AVERAGE LOAD VALUE N/cm<sup>2</sup> @ 0,23 mm Indentation</b>	250
<b>SURFACE ROUGHNESS (Ra micron)</b>	1,2
<b>ELONGATION (%)</b>	<0,9
<b>TENSILE STRENGTHS (N/mm)</b>	>60
<b>WATER &amp; SOLVENT PROTECTION</b>	No
<b>ADDITIONAL INFORMATION</b>	
<b>CONSTRUCTION</b>	The special carcass construction offers excellent mechanical resistance

**FOR ANY FURTHER DETAILS AND FOR A QUOTATION  
PLEASE REFER TO YOUR SALES MANAGER  
OR EMAIL US AT: [printingsm@trelleborg.com](mailto:printingsm@trelleborg.com)**