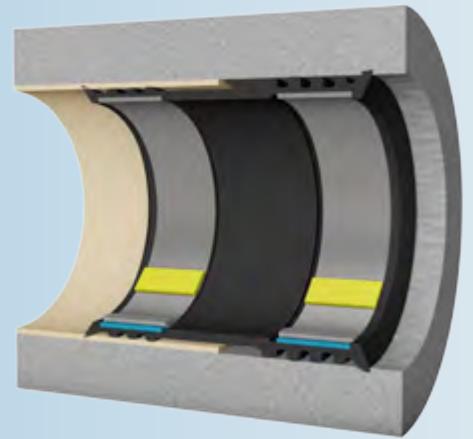


L-Lock-P™ Liner End Seal

**Prevents Infiltration
between Liner and
Host Pipe on High
Pressure & Potable
Water Pipes**



**L-Lock-P™ seals the
interface between the
liner end and the host
pipe to prevent in- and
exfiltration.**

**The positive locking
expansion mechanism
and our highly durable
materials allow for great
performance and sealing
at high pressure.**

KEY FEATURES AND BENEFITS

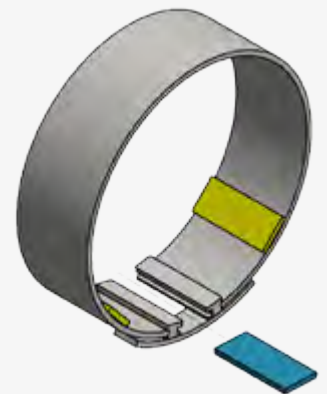
Easy installation via high force hydraulic expansion tool

Suitable for high pressure pipes (290 PSI/20 bar rating)

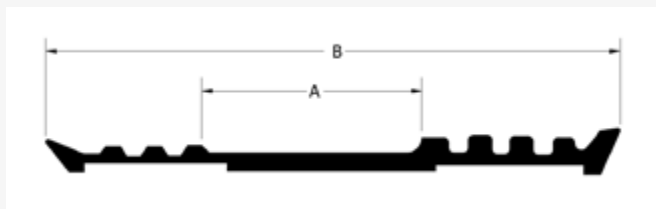
Suitable for most types of pipe, including steel, cast iron, concrete and plastic with inner liner

Available in a wide range of diameters (6" – 96")

Lead-free product, certified for potable water (NSF 372 and NSF 61)



AVAILABLE WIDTHS



A = The portion of the seal which covers the liner and host pipe interface.

B = The complete width of the seal once installed (includes the band compression area).

Seal	Sealing Area "A"	Coverage Area "B"
L-Lock-P™	3 ³ / ₁₆ " 81 mm	8 ⁵ / ₁₆ " 211 mm



COMPONENTS INCLUDED

Rubber Seal

Stainless-Steel Expansion Bands

Inserts

Flap

MEASURING FOR L-LOCK-P™ LINER END SEALS

Prior to ordering L-Lock-P™ Liner End Seals it is important to measure the inside diameter of the pipe at the area covered by the liner and at the area where the host pipe is exposed.



TESTED AND APPROVED



Certified to
NSF/ANSI 61



Certified to
NSF/ANSI 372



TRELLEBORG

WWW.TRELLEBORG.COM/PIPE-SEALS