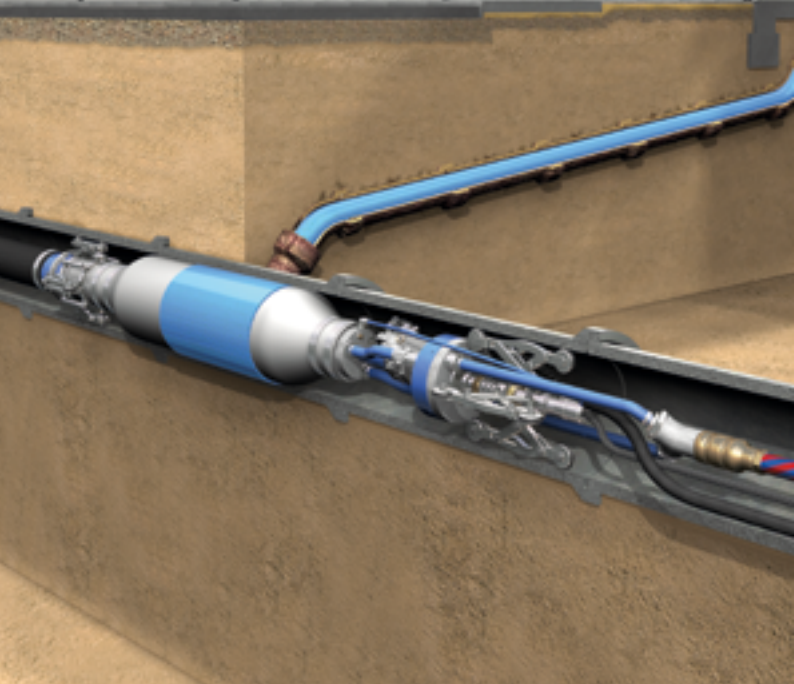




Vom Hauptkanal zum Haus

Lateral Connection Rehabilitation



epros® DrainMth

epros® DrainMth System

- System zur Instandsetzung von Hausanschlussleitungen (inkl. Übergang zum Hauptrohr) in entgegengesetzter Richtung: Vom Hauptkanal zum Gebäude
- Aufgrabungsfrei
- Kein Zutritt im Hausbereich über Schacht oder Revisionsöffnung erforderlich
- Hauptrohrdurchmesser:
DN 150 (saniert ca. DN 135) – DN 600
- Seitenanschluss-Durchmesser:
DN 100 – DN 200
- Anschlusswinkel: 30° – 90°
- Sanierungslänge: ca. 30 m
- Max. Entfernung Startschacht – Anschlusspunkt: 150 m
- Leichte Positionierbarkeit
- Hohe mechanische Kennwerte
- Systemkomponenten zum Patent angemeldet

4 Packertypen

- Typ 0: DN 135 – 150 (in Vorbereitung)
- Typ I: DN 200 – 225
- Typ II: DN 250 – 350
- Typ III: DN 400 – 600

epros® DrainMth Liner „Basic“

- 100 % Polyesterfaser – Flexibles Material
- Einseitig PP-beschichtet
- 100 % dampfbeständig
- Bogengängigkeit bis 45°

epros® DrainMth Liner „Stretch“

In Vorbereitung:

- Bogengängigkeit bis 90°
- 2 Dimensionswechsel

epros® DrainMth System

- Rehabilitation system for lateral connections pipes including the transition to the main pipe, operating from the main sewer to the house
- No-Dig method
- No need to enter private property
- Main pipe diameter:
DN 150 (rehabilitated approx. DN 135)
– DN 600 / 10" – 14"
- Lateral diameter: DN 100 – DN 600 / 4" – 8"
- Connection angle: 30° – 90°
- Rehabilitation length: approx. 30 m / 98 ft
- Max. line distance between access manhole and lateral junction: 150 m / 492 ft
- Easy to position
- Excellent mechanical properties
- General technical approval from German DIBt
- Patent pending for system components

4 Packer Types:

- Type 0: DN 135 – 150 / 5" – 6" (in preparation)
- Type I: DN 200 – 225 / 8" – 9"
- Type II: DN 250 – 350 / 10" – 14"
- Type III: DN 400 – 600 / 16" – 24"

epros® DrainMth Liner „Basic“

- 100 % polyester fibre – flexible material
- One side PP coated
- 100 % steam resistant
- Negotiates bends up to 45°

epros® DrainMth Liner „Stretch“

In preparation:

- Negotiates bends up to 90°
- Allows for up to 2 changes in dimension



Trelleborg is a world leader in engineered polymer solutions that seal, damp and protect critical applications in demanding environments. Our innovative engineered solutions accelerate performance for customers in a sustainable way. The Trelleborg Group has local presence in over 40 countries around the world.

Trelleborg Pipe Seals is a world leading supplier of new and rehabilitation sealing solutions for concrete and plastic pipes and manholes used for water, sewerage and drainage.

We deliver continuous innovation to customers across the globe, with a logistics and sales network. Comprising the most advanced polymer technology, our high performance seals ensure fulfillment of the highest possible reliability standards.

WWW.TRELLEBORG.COM/PIPE-SEALS



facebook.com/pages/Trelleborg-Pipe-Seals-Duisburg

twitter.com/PipeSeals

youtube.com/c/TrelleborgPipeSeals



Vertrieb Deutschland/Europa,
Trelleborg Pipe Seals Duisburg GmbH, Dr.-Alfred-Herrhausen-Allee 36, 47228 Duisburg,
Germany, Phone: +49 2065 999 0, Fax: +49 2065 999 111

Pipeline Rehabilitation Products,
North America, c/o Trelleborg Pipe Seals Milford Inc, 250 Elm Street Milford,
New Hampshire 03055, USA, Tel: +1 603 673 8680, Fax: +1 603 673 7271