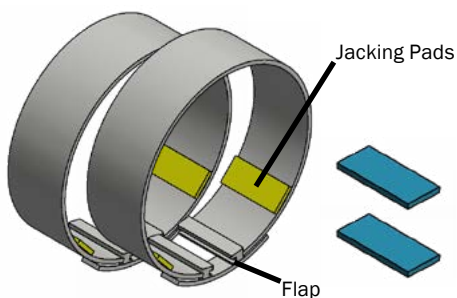


I-Lock-P™ Mechanical Seal

Installation Guide

COMPONENTS



Stainless Steel
Expansion Bands

Spacer



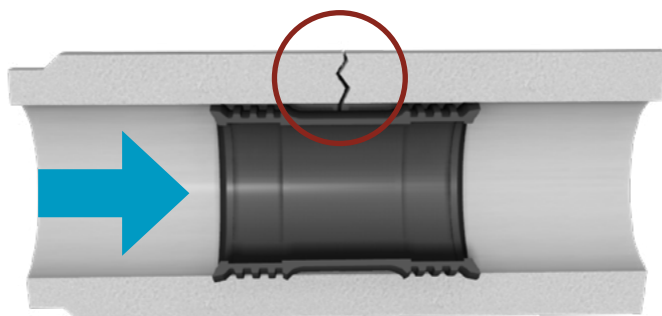
Hydraulic
Expansion Tool



Flexible Rubber Seal

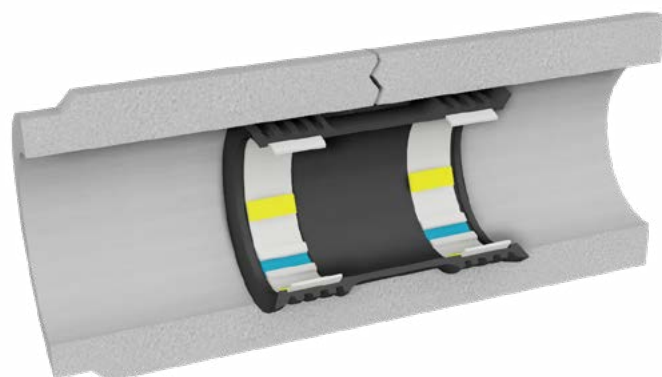
Range: 16" to 96" diameter pipes

INSTALLATION PROCEDURE



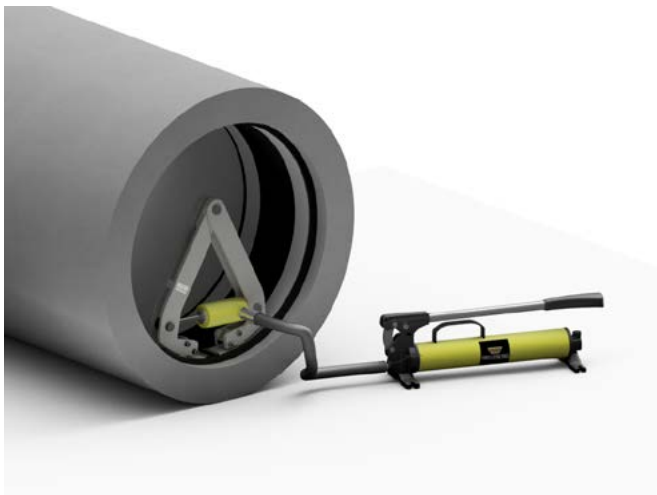
STEP 1

Place flexible rubber seal in pipe ensuring that the point of leakage is centered within the sealing area. Build up extensions if necessary to ensure that the damaged area is covered.



STEP 2

Place expansion bands in designated band tracks. Flaps should be nominally centered underneath the expansion locations as shown above.



STEP 3

Insert expansion tool so that tips are located inside the jacking pads on the expansion band.

Expand tool to the nominal pressures stated in the table below.

NOTE:

Use caution when installing I-Lock-P™ on low pressure pipes. Contact Trelleborg with any questions.

Smaller diameters use a single expansion point, larger diameters will have multiple expansion points as indicated in the table below.



STEP 4

Insert largest spacer that would fit in the designated slot and release expansion tool.

For multiple expansion points repeat procedure.

EXPANSION BAND INSTALLATION

Band Segments	Min Diameter	Max Diameter	Install Pressure (PSI)
1	16"	24"	4500
2	24"	47"	6000
3	48"	96"	8000



TRELLEBORG

WWW.TRELLEBORG.COM/PIPE-SEALS