

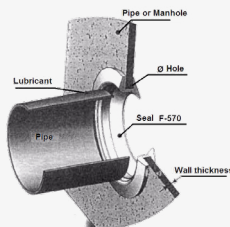
# F-570

## Flexible Connection System for Pipes to Thin Walled Tanks and Pipes



### SEAL DESIGN AND FUNCTION

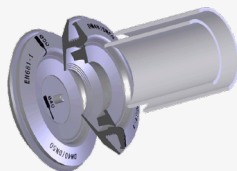
Trelleborg's F-570 is a single lip seal, used for connecting PVC pipes to thin walled PVC, PE or metallic tanks and pipes.



### SEAL PERFORMANCE

The F-570 fits around the inside diameter of the access hole.

The design of the seal provides excellent sealing performance and significant angular deflection possibilities.



F-570 is usually used on smooth wall PVC pipes, but small dimensions (DN 25 to DN 90) may also be used with corrugated hoses in dry networks.

DN 25 to DN 90 mm seals accommodate 2 pipe diameters. (see table of dimensions). The unwanted part of the seal is cut away when used for the larger DN.



### MATERIAL

Synthetic rubber

Hardness 40±5 IRHD

Approved in accordance with EN 681-1

Protected against ozone

Available in oil resistance material

### SEAL MARKING AND BOX LABELS

Each seal is marked with outside diameter and manufacturing period.

The box is labelled with corresponding data.

## JOINT ASSEMBLY

Chamfer the edge of the connecting pipe

Clean the seal

Lubricate the edge of the connecting pipe

Center the end of the pipe and push it into the seal

Pipe connections with F-570 shall always be laid in accordance with applicable standards and regulations.

Please contact Trelleborg Pipe Seals for technical advice and joint design recommendations to meet your performance requirements.

## AVAILABLE DIMENSIONS (MM)

From  $\varnothing$  100 to  $\varnothing$  315 mm

$\varnothing$ EXT Connecting Pipe	Art. Number	Material	$\varnothing$ Hole Recommended ( $\pm 0.5$ )	Wall Thickness (Approx.)	
DN100	1663922	EPDM	110	3 - 8	
	1663931	NBR			
DN110	1500820	EPDM	117		
	1500836	NBR			
DN125	1927624	EPDM	132		5 - 8
	1927633	NBR			
DN160	1434122	EPDM	167		
	1434131	NBR			
DN200	1434220	EPDM	207	6 - 8	
	1434236	NBR			
DN250	1434300	EPDM	262		
	1434334	NBR			
DN315	1718824	EPDM	327		6 - 10
	1718833	NBR			

\* NBR used for Hydrocarbon applications

\* EPDM used for general application

From  $\varnothing$  25 to  $\varnothing$  90 mm

$\varnothing$ EXT Connecting Pipe	Art. Number (Usual Material)	$\varnothing$ Hole Recommended ( $\pm 0.5$ )	Wall Thickness (Approx.)
DN25/32	1994820	40	2 - 10
DN40/50	1503825	57	3 - 12
DN50/63	1504724	70	3 - 14
DN75/90	1504024	98	3 - 14

Examples of authorities Trelleborg Pipe Seals cooperates with:



# TRELLEBORG

[WWW.TRELLEBORG.COM/PIPE-SEALS](http://WWW.TRELLEBORG.COM/PIPE-SEALS)