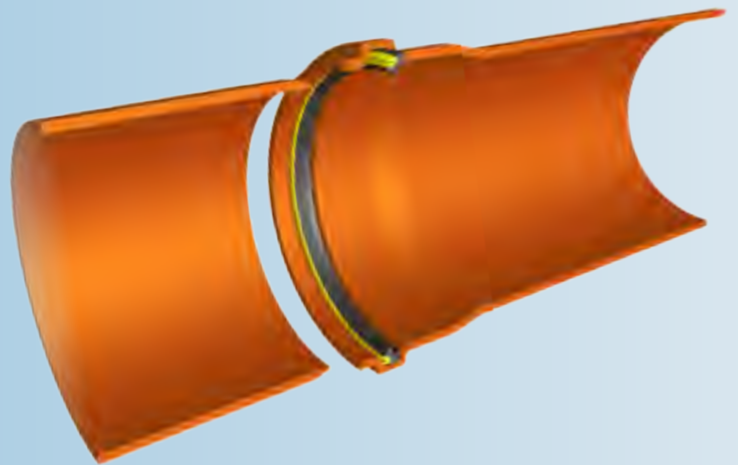


F-589 Din-Lock™

Locked-in sealing systems for square groove, plastic pipes and fittings for wastewater and cable protection applications



SEAL DESIGN AND FUNCTION

Trelleborg's F-589 Din-Lock™ seal is a combined lip and compression sealing system that is positioned in the socket by the pipe manufacturer after the bell has been formed. The unique design has a flexible thermoplastic elastomer sealing element bonded to a polypropylene retaining ring which holds the seal firmly in the correct position during pipe transportation and joint assembly. The seal is designed to absorb any permissible variation in groove geometry whilst maintaining a high sealing performance with the lowest possible jointing force.

SEAL PERFORMANCE

The F-589 Din-Lock™ seal meets or exceeds current American standards for wastewater lines both for indoor and underground.

Furthermore, the seal design gives low assembly forces making pipe jointing easier. Test reports are available from Trelleborg Pipe Seals on request.



MATERIAL

The F-589 Din-Lock™ seal is made from two materials. The sealing element is TPE and the plastic retaining element is polypropylene. The TPE material meets the American Standard ASTM F-477. Detailed material specification are available on request from Trelleborg Pipe Seals.

QUALITY ASSURANCE

CE-marking

BSI (Kitemark)

KIWA/Swedcert

DIBt (Ü)

KIWA (KOMO)

COPRO (BENOR)

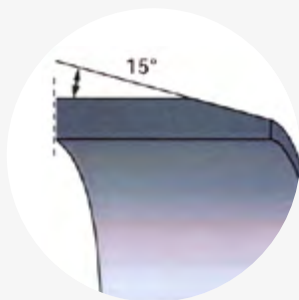
QPlus

STANDARDS

ASTM F-477

JOINT ASSEMBLY

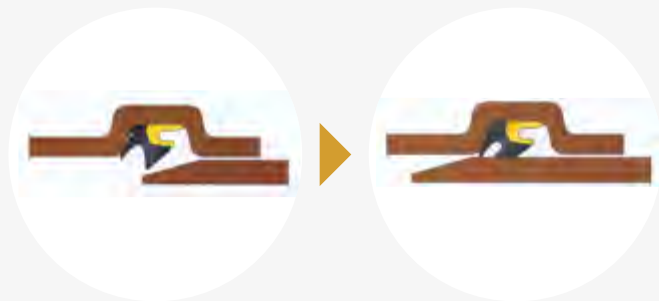
Chamfer the spigot end



Clean the socket

Apply lubricant on the spigot before assembly

Slide the spigot into the socket, thus compressing the sealing lip



Pipes with F-589 shall always be laid in accordance with applicable standards and regulations.

Please contact Trelleborg Pipe Seals for technical advice and joint design recommendations to meet your performance requirements.

SEAL MARKING AND BOX LABELS

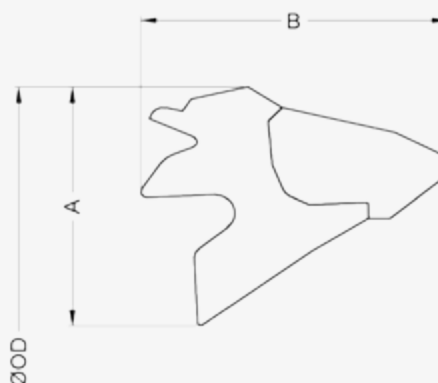
Each seal is marked with seal dimension and period of manufacture. The box is labelled with corresponding data

EXAMPLES OF SIZES (INCHES)

Dimensions, mm		
Pipe size	A	B
4	8.6	11.4
6	8.6	11.4
8	11.4	17.0

EXAMPLES OF SIZES (MM)

Dimensions, inches		
Pipe size	A	B
4	0.338	0.449
6	0.338	0.449
8	0.449	0.667



Examples of authorities Trelleborg Pipe Seals cooperates with:



CSA
Group



TRELLEBORG

WWW.TRELLEBORG.COM/PIPE-SEALS