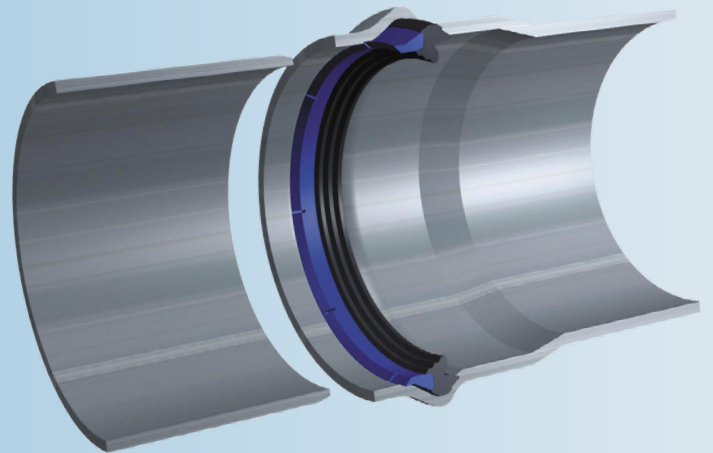


Forsheda 576 Anger-Lock™

Locked-in sealing system for plastic pressure pipes, wastewater conduit and cast iron fittings



SEAL DESIGN AND FUNCTION

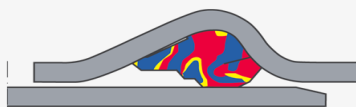
The patented Forsheda 576 Anger-Lock™ locked-in seal is a combined lip and compression seal which is installed inside the socket after it has been formed. Making the seal an integral part of the pipe eliminates many of the disadvantages of separate sealing rings.

The unique design comprises of a rubber sealing element bonded to the plastic retaining element which holds the seal securely in position during transport and pipe assembly. The seal is designed to absorb any permissible variations in the groove.

SEAL PERFORMANCE

The F-576 Anger-Lock™ joint meets or exceeds current European Standards for pressure, vacuum, deflection and shear load.

The seal design gives low assembly forces making pipe jointing easier. Test reports are available from Trelleborg Pipe Seals on request.



MATERIAL

Synthetic rubber

Hardness 60±5 IRHD

Approved in accordance with EN 681-1

Ozone resistant

Approved for contact with cold potable water

QUALITY ASSURANCE

CE-marking

BSI (Kitemark)

KIWA/Swedcert

KIWA-ATA

Watermark

STANDARDS

EN 681-1 WC,WA

K17504 (KIWA-ATA)

AS 1646

AFNOR XP P 41-250 (ACS)

BS 6920 (WRAS)

Hydrocheck (Belgaqua)

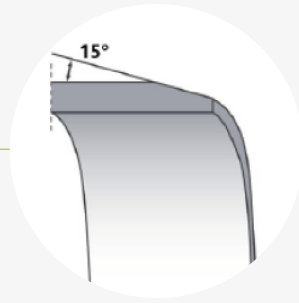
Elastomerleitlinie

AS/NZS 4020

W270

JOINT ASSEMBLY

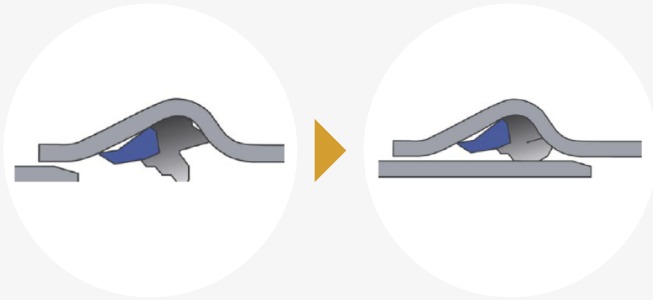
Chamfer the spigot end



Clean the socket

Apply lubricant on the spigot before assembly

Slide the spigot into the socket, thus compressing the sealing lip

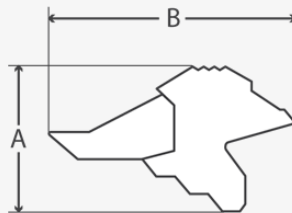


Pipes with F-576 shall always be laid in accordance with applicable standards and regulations.

Please contact Trelleborg Forsheda Pipe Seals for technical advice and joint design recommendations to meet your performance requirements.

SEAL MARKING AND BOX LABELS

Each seal is marked with seal dimension and period of manufacture. The box is labelled with corresponding data.



EXAMPLES OF SIZES (MM)

Pipe Size	A	B
50	7,2	12,3
63	10,4	17,8
75	11,6	19,9
90	12,7	21,7
100*	13,8	21,6
110	13,8	22,0
125	13,8	23,6
140	14,8	25,3
150*	17,2	23,5
160	15,9	27,2
180	17,5	28,8
200*	16,9	29,0
200	20,2	32,0
225*	18,0	30,8
225	21,8	33,8
250*	21,1	34,2
250	23,6	37,0
280	22,5	36,1
300*	23,7	40,4
315	23,6	37,6
355	25,8	40,9
400	28,0	44,9
450	29,5	47,0
500	31,6	51,4
630	38,2	61,3
710	42	67,4
800	43,3	69,4

*Seal for Australian Standard AS-4441

Examples of authorities Trelleborg Pipe Seals cooperates with:



TRELLEBORG

WWW.TRELLEBORG.COM/PIPE-SEALS