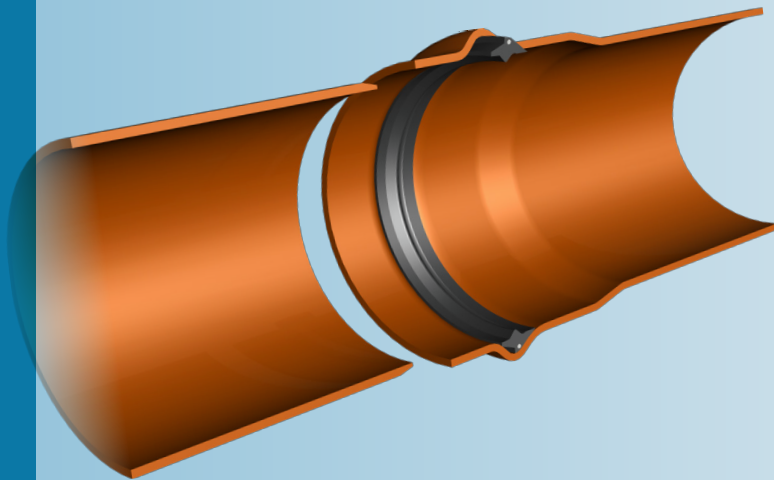




# Forsheda 569 Rieber Sewer Inches

Integrated sealing system for plastic pipes for wastewater applications



## SEAL DESIGN AND FUNCTION

The Forsheda 569 Rieber Sewer Inches integrated system uses the mandrel together with the seal as a tool to form the pipe socket during the manufacturing process. Forsheda 569 Rieber Sewer Inches is a seal composite consisting of:

A flexible rubber element to seal effectively against spigot and socket.

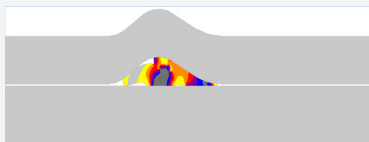
A treated metal insert which holds the seal firmly in place.

The seal is placed onto the socket during pipe manufacture, ensuring it is always in the correct position in the joint. The seal is equally effective under both positive and negative pipe pressure (vacuum).

For diameters 15" and above an upgraded patented product design (US PAT 9,085,101).

## SEAL PERFORMANCE

The F-567 Rieber Sewer Metric seal meets or exceeds current ASTM 2241 pipe sealing requirements and incorporate the traditional Rieber seal design.



## MATERIAL

Synthetic SBR rubber, available in EPDM, Nitrile and Neoprene by special order

Hardness 55±5 Shore A

Meets the requirements of ASTM F-477/LH, NMX T-021 & ISO 4733

Approved for contact with cold potable water according to ANSI/NSF 61

Available in oil resistant material

Product/material certified to CSA, Certimex and ASTM standards by third party accredited laboratories

## QUALITY ASSURANCE

ISO 9001

NSF

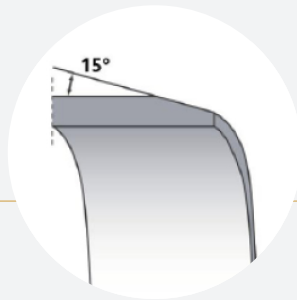
UL

CSA

CERTIMEX

## JOINT ASSEMBLY

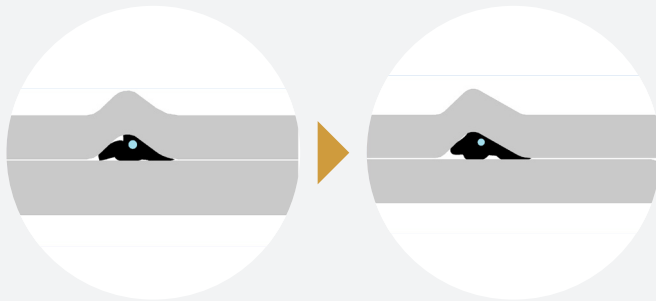
Chamfer the spigot end



Clean the socket

Apply lubricant on the spigot before assembly

Slide the spigot into the socket, thus compressing the sealing lip



F-569 Rieber Sewer Inches shall always be laid in accordance with applicable standards and regulations.

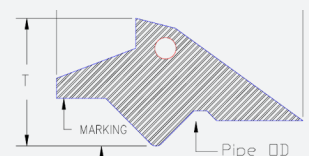
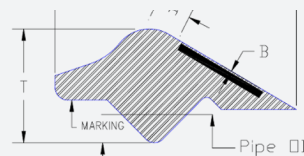
Please contact Trelleborg Pipe Seals for technical advice and joint design recommendations to meet your performance requirements.

## SEAL MARKING AND BOX LABELS

Each seal is marked with seal dimension and period of manufacture. The box is labelled with corresponding data.

### EXAMPLES OF SIZES (Inches)

Size	ID-Nom	W-Ref	T-Nom	B-Ref	A-Ref	Pipe OD Ref
4	4.028	0.724	0.378			5.250
5	5.444	0.770	0.402			
6	6.065	0.815	0.425			7.500
8	8.168	0.906	0.472			9.500
10	10.220	1.087	0.580			11.500
12	12.195	1.177	0.614			13.500
15	14.947	1.358	0.616	0.03	0.1785	15.300
18	18.303	1.539	0.712	0.03	0.2065	18.701
21	21.601	1.720	0.786	0.03	0.2275	22.047
24	24.309	1.902	0.863	0.03	0.2505	24.803
27	27.410	2.083	0.945	0.03	0.2735	27.953



Examples of authorities Trelleborg Pipe Seals cooperates with:



WWW.TRELLEBORG.COM/PIPE-SEALS