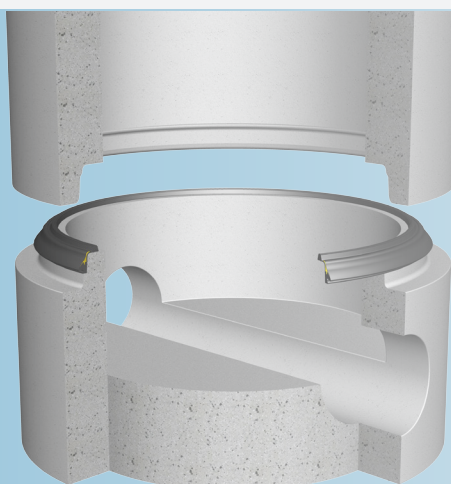


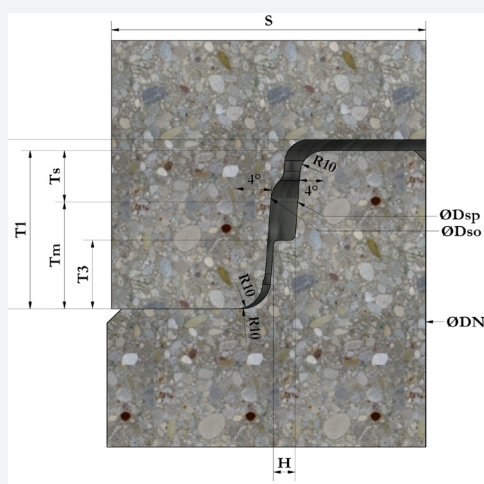
Forsheda 171

Forsheda 171 is a combination of a prelubricated sliding seal with integrated load distributor element for concrete manhole systems



SEAL DESIGN AND FUNCTION

Forsheda 171 is a sliding seal with a prelubricated closed sliding mantle resulting in low jointing force as there is no friction between rubber and concrete.



DN	DSP	DSO	T1	T2	TM	TS	S	H
800	890 ±2	913 ±1	65	70	39	26	120	8
1000	1090 ±2	1113 ±1	65	70	39	26	120	8
1200	1300 ±3	1327 ±1	75	80	43	32	135	9
1500	1620 ±3.5	1652 ±1.5	85	90	49	36	150	11

The joint design should comply with the requirements of Din V 4034-1.

Connected to the seal is a load distributor element which prevents concrete to concrete contact between the manhole sections.

SEAL PERFORMANCE

The Forsheda 171 seal meets the requirements of all current relevant European standards. Joint performance is dependent on dimensional accuracy and surface finish of socket and spigot. Test reports are available on request.



MATERIAL

Synthetic EPDM rubber

Hardness 40±5 IRHD

Approved in accordance with EN 681-1

Protected against ozone

QUALITY ASSURANCE

ISO 9001

British Standard "Kitemark"

CE-marking

QR 4060

JOINT ASSEMBLY

Stretch the seal onto the spigot and position against the shoulder.



Equalize the stress in the seal by lifting and releasing at a few points.



The seal must sit evenly against the spigot shoulder all around the manhole. Lubrication of the socket or spigot is not required.



Centre the joint and assemble. The position of the seal in the final manhole joint is shown. If re-joining is required ensure the sliding skin is drawn back to the position as shown in Figure 1.

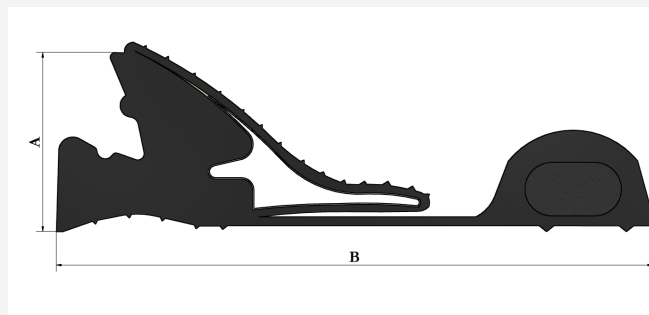


SEAL MARKING AND BOX LABELS

Each seal is marked with seal dimension and the date of manufacture. The box is labelled with the corresponding data.

EXAMPLES OF SIZES (MM)

A - MM	B - MM	Joint gap, mm
21.0	72.7	11.5±1.5
24.4	78.0	13.5±2.0
29.1	87.6	16±2.5



Please contact Trelleborg Pipe Seals for technical advice and joint design recommendations to meet your performance requirements. Manholes and pipes with Forsheda 171 shall always be laid in accordance with applicable standards and regulations.

Examples of authorities Trelleborg Pipe Seals cooperates with:




TRELLEBORG

WWW.TRELLEBORG.COM/PIPE-SEALS