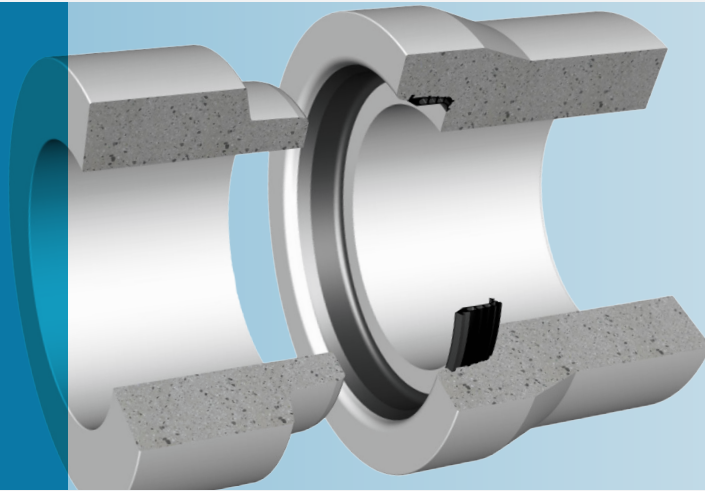


Forsheda 165

Integrated seal for
concrete pipe and
manhole systems

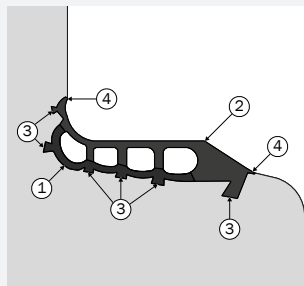


SEAL DESIGN AND FUNCTION

Forsheda 165 is a one-piece integrated seal that is cast into the socket during pipe or manhole manufacture. The seal can also be used for concrete pipe connections to manholes.

Pallet and joint drawings are available from Trelleborg Pipe Seals on request.

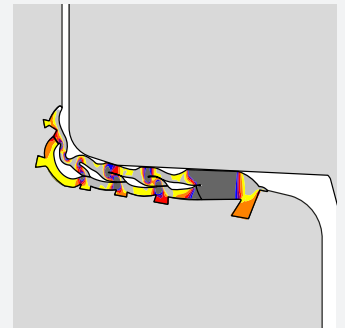
The seal is produced from two different hardness of rubber.



1. Forming part, made of hard rubber, (70 IRHD) ensures a secure and accurate joint profile during casting.
2. Sealing part, made of soft rubber, (50 IRHD) is a combined lip and compression seal.
3. Holding sections are cast into the concrete during pipe manufacture and secure the seal in the correct position.
4. Slurry lips seal against the pallet preventing ingress during concrete compaction.

SEAL PERFORMANCE

The seal meets or exceeds the requirements of all current relevant European standards including the FBS demands.



MATERIAL

Synthetic EPDM rubber

Dual Hardness

Sealing part 50±5 IRHD

Forming part 70±5 IRHD

Approved in accordance with EN 681-1

Protected against ozone

QUALITY ASSURANCE

ISO 9001

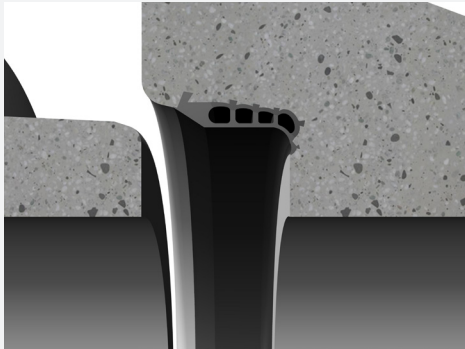
British Standard "Kitemark"

CE-marking

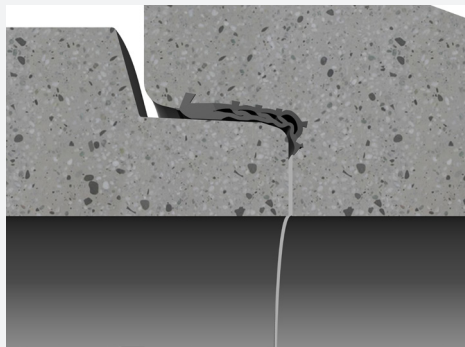
QR 4060

JOINT ASSEMBLY

Check that the socket and spigot are in good condition and free from mud and gravel. Do not use damaged pipes. Apply lubricant to the spigot. This should be spread evenly over the entire surface paying special attention to the front radius of the spigot. Additional lubricant applied to the seal may further reduce the jointing force.

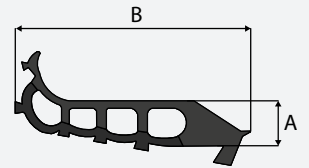


Center the spigot into the socket and push the pipes together. The seal design prevents concrete to concrete contact.



SEAL MARKING AND BOX LABELS

Each seal is marked with seal dimension and the date of manufacture. The box is labelled with the corresponding data.



EXAMPLES OF SIZES (MM)

PROFILE	Effective thickness MM	A - MM	B - MM
12	12.0	12.4	64.5
14	14.0	14.7	72.4
14T	14.0	14.6	86.5
18	18.0	18.4	89.2
18N	18.0	18.4	98.3
18T	18.0	18.4	109.2
22	22.0	22.4	107.1
22T	22.0	22.6	119.4
26	26.0	26.5	128.3

Concrete pipes with Forsheda 165 shall always be laid in accordance with applicable standards and regulations.

Please contact Trelleborg Pipe Seals for technical advice and joint design recommendations to meet your performance requirements.

Examples of authorities Trelleborg Pipe Seals cooperates with:



WWW.TRELLEBORG.COM/PIPE-SEALS