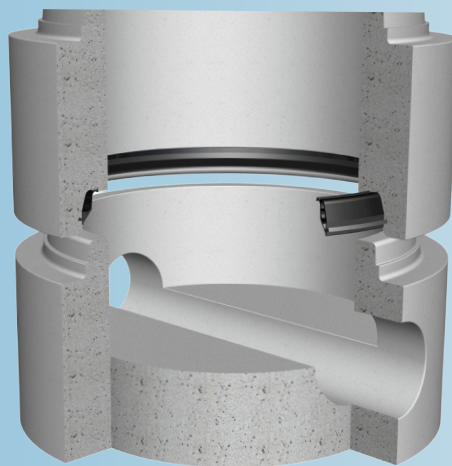


Forsheda 160

Integrated seal for concrete manhole systems using DIN V 4034-1 spigot design



SEAL DESIGN AND FUNCTION

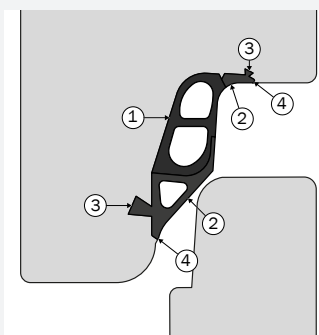
Forsheda 160 is a one-piece integrated seal that is cast into the socket during manhole manufacture. It is specifically designed for use with the spigot design according to DIN V 4034-1.

Pallet and joint drawings are available from Trelleborg Pipe Seals on request

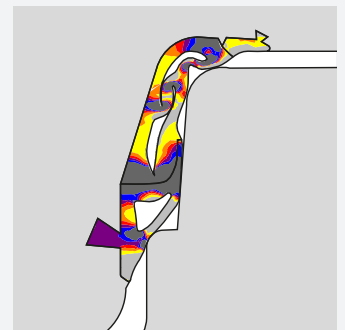
1. Forming part, made of hard rubber, (63 IRHD) ensures a secure and accurate joint profile during casting.

2. Sealing part, made of soft rubber, (40 IRHD) is a combined lip and compression seal. The soft rubber has excellent flexibility to take up irregularities in the spigot surface.

3. Retaining sections are cast into the concrete during pipe manufacture and secure the seal in the correct position.



4. Slurry lips seal against the base ring (pallet) preventing concrete ingress during manhole manufacture. The lips are made of soft 40 IRHD rubber which gives an excellent seal between seal and base ring.



SEAL PERFORMANCE

Forsheda 160 meets or exceeds the requirements of all current relevant European standards including the FBS demands.

MATERIAL

Synthetic rubber EPDM

Dual hardness

Sealing part 40±5 IRHD

Forming part 63±5 IRHD

Approved in accordance with EN 681-1

Protected against ozone

QUALITY ASSURANCE

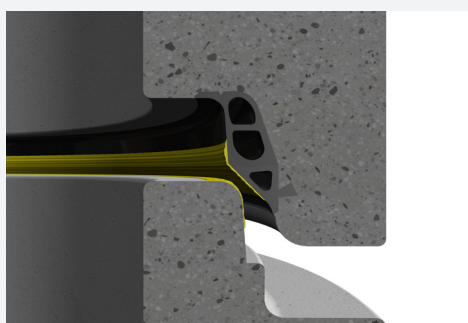
ISO 9001

British Standard "Kitemark"

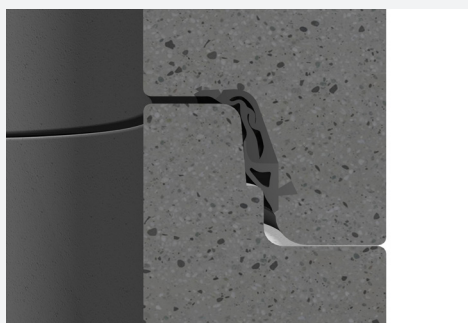
CE-marking

JOINT ASSEMBLY

Apply lubricant to the spigot of the manhole. This should be spread evenly over the entire surface paying special attention to the top radius. Lubrication may also be applied to the seal to further assist jointing.



Centre the socket over the spigot and lower the upper manhole element to complete the joint. Light weight elements may require an additional vertical force to fully close the joint.

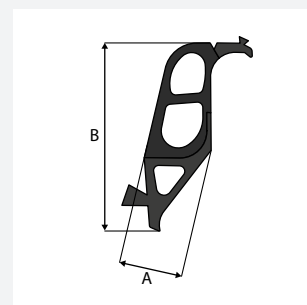


SEAL MARKING AND BOX LABELS

Each seal is marked with seal dimensions as well as the manufacturing date. The box is labelled with the corresponding data.

EXAMPLES OF SIZES (MM)

DN - mm	Effective Profile thickness, mm	A - mm	B - mm
1000	20.0	22.9	68.2
1200	24.0	22.0	71.3
1500	25.0	24.9	80.6



Concrete manholes with Forsheda 160 shall always be laid in accordance with applicable standards and regulations

Examples of authorities Trelleborg Pipe Seals cooperates with:




TRELLEBORG

WWW.TRELLEBORG.COM/PIPE-SEALS