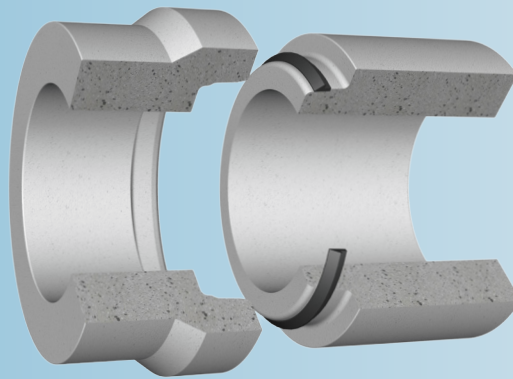


Forsheda 159

Seal for concrete pipe and manhole systems and jacking pipes

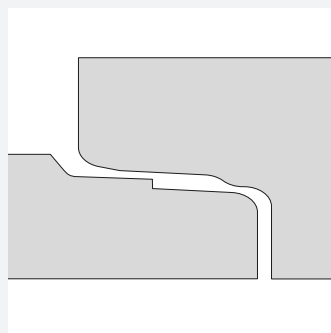


SEAL DESIGN AND FUNCTION

Forsheda 159 is a sliding seal that is stretched onto the spigot of the pipe or manhole. Lubricant is applied to the socket prior to jointing.

The joint design is standard in many countries.

The seal is deformed when the spigot is inserted into the socket creating a positive seal under both internal and external pressure.

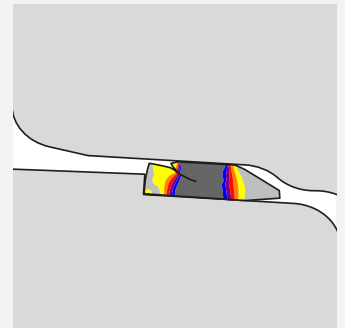


The wedge shaped design encourages self centering of the joint and is particularly suitable for jacking pipe where a higher pressure robust joint is required. An 'S' version is available in a limited number of profiles with a reduced 'B' dimension where the design of joint or spigot length is not suitable for the standard seal. See 'Example of sizes' on page 2 for details.

SEAL PERFORMANCE

The Forsheda 159 seal meets all relevant current European standards.

In addition the low assembly force makes pipe jointing easier.



MATERIAL

Synthetic SBR or EPDM rubber

Hardness 40±5 IRHD

Approved in accordance with EN 681-1

Protected against ozon

QUALITY ASSURANCE

ISO 9001

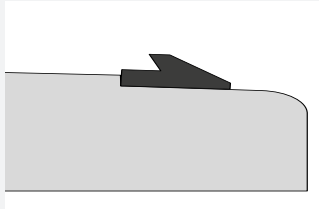
British Standard "Kitemark"

CE-marking

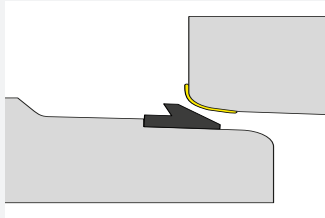
JOINT ASSEMBLY

Stretch the seal onto the pipe spigot and position against the shoulder as shown.

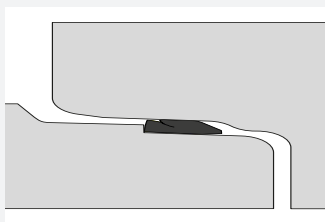
Equalise the tension by lifting and releasing the seal at several points.



Apply lubricant on the socket. This must be evenly spread over the surface of the entire socket.



Center the spigot into the socket and assemble

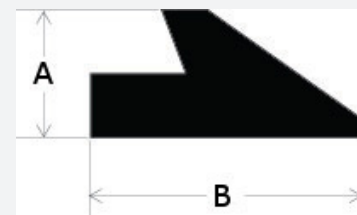


SEAL MARKING AND BOX LABELS

Each seal is marked with seal dimensions as well as the manufacturing date. The box is labelled with the corresponding data.

EXAMPLES OF SIZES (MM)

A, mm	B, mm	B, mm	Joint Gap
		"S" Version	
8.5	8.2		5.3±0.7
10.0	21.4		6.2±0.8
12.0	25.7		7.4±0.9
14.0	30.0		8.6±1.1
16.0	30.0	26.0	9.8±1.3
18.0	38.6	28.0	11.0±1.4
20.0	42.9	31.8	12.2±1.5
22.0	47.1	35.0	13.5±1.7
24.0	50.0	38.5	14.7±1.9
26.0	55.7	41.7	15.9±2.1
28.0	49.0	44.4	17.3±2.1
30.0	53.7		18.3±2.5
36.0	62.0		22.3±2.6



Please contact Trelleborg Pipe Seals for technical advice and joint design recommendations to meet your performance requirements.

Concrete pipes with Forsheda 159 shall always be laid in accordance with applicable standards and regulations.

Examples of authorities Trelleborg Pipe Seals cooperates with:



WWW.TRELLEBORG.COM/PIPE-SEALS