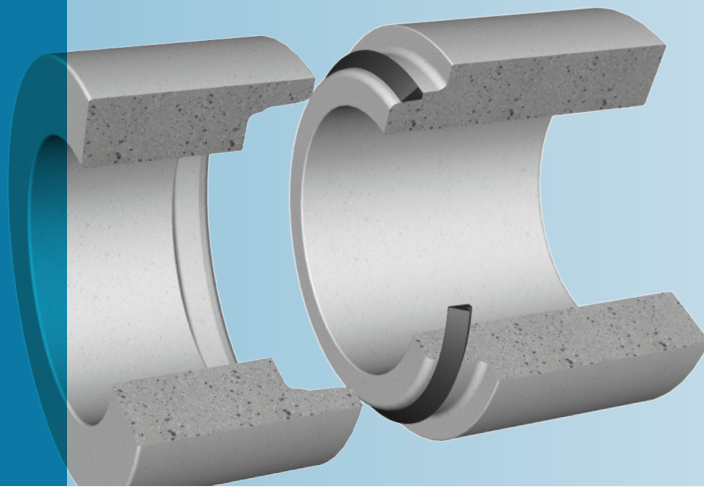


# Forsheda 104

Seal for concrete pipe and manhole systems

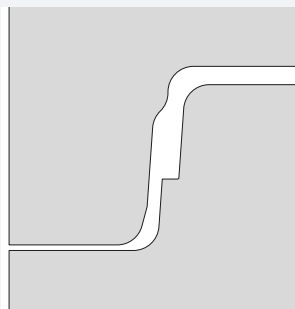


## SEAL DESIGN AND FUNCTION

Forsheda 104 is a sliding seal that is stretched onto the spigot end of the pipe or manhole. Lubricant is applied to the socket prior to jointing.

The joint design is standard in many countries. A drawing is available from Trelleborg Pipe Seals on request.

The special design of the joint and seal make the system easy to centre during jointing. This design permits installation with very low force.

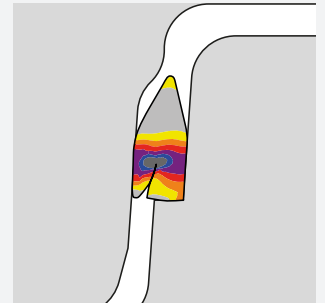


Typical joint design

## SEAL PERFORMANCE

The Forsheda 104 seal meets the requirement of all relevant current European standards.

Joint performance is dependent on dimensional accuracy and surface finish of socket and spigot. Test reports are available from Trelleborg Pipe Seals on request.



## MATERIAL

Synthetic SBR or EPDM rubber

Hardness 40±5 IRHD

Approved in accordance with EN 681-1

Protected against ozone

Oil resistant grades are available on request

## QUALITY ASSURANCE

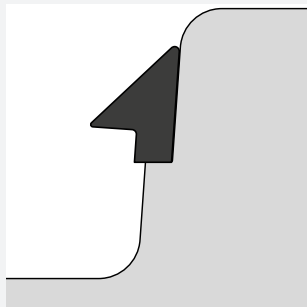
ISO 9001

British Standard "Kitemark"

CE-marking

## JOINT ASSEMBLY

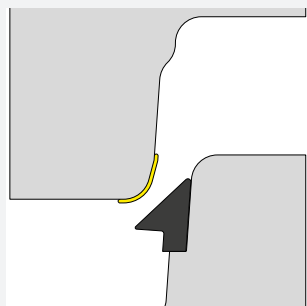
Stretch the seal onto the spigot and position against the shoulder.



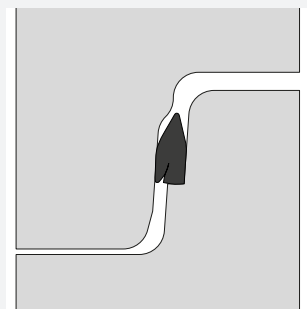
Equalize the stress in the seal by lifting and releasing at a few points. The seal must sit evenly against the spigot shoulder all around the pipe or manhole.



Apply lubricant to the socket. The lubricant must be evenly spread over the surface of the entire socket paying special attention to the radius at the front.

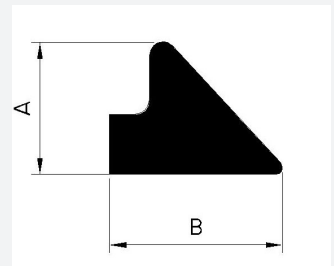


Centre the joint and assemble using suitable equipment.



## SEAL MARKING AND BOX LABELS

Each seal is marked with seal dimension and the date of manufacture. The box is labelled with the corresponding data.



## EXAMPLES OF SIZES (MM)

A	B	Joint GAP
16	21.0	9.2±1.2
18	25.0	10.4±1.4
20	26.0	11.5±1.5
22	28.0	12.7±1.7
24	30.5	13.5±2.0
26	33.5	15.0±2.0
28	35.5	16.0±2.5
30	38.0	17.3±2.5
33	43.0	18.1±2.5
36	46.5	19.8±2.5
38	49.0	20.9±2.5

Pipes and manholes with Forsheda 104 shall always be laid in accordance with applicable standards and regulations.

Please contact Trelleborg Pipe Seals for technical advice and joint design recommendations to meet your performance requirements.

Examples of authorities Trelleborg Pipe Seals cooperates with:



**TRELLEBORG**

WWW.TRELLEBORG.COM/PIPE-SEALS