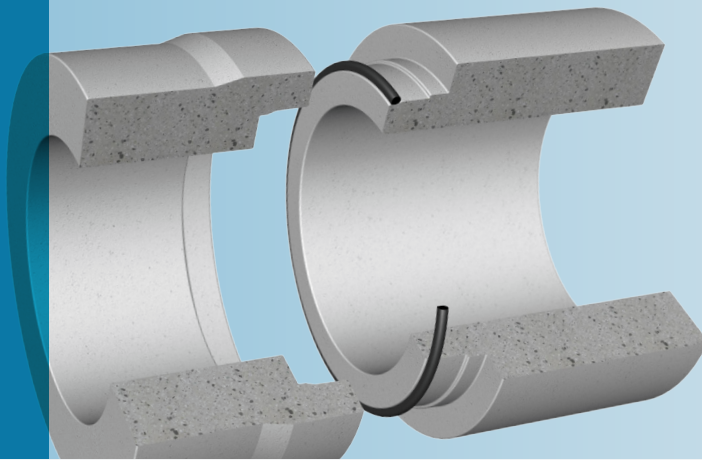


Forsheda 101 G-Ring

Seal for low pressure
concrete pipe and
manhole systems

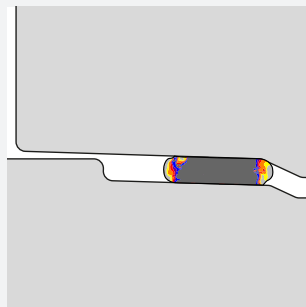


SEAL DESIGN AND FUNCTION

Forsheda 101 is a compression seal which is rolled into place during joint assembly.

This joint design is standard in many countries. A drawing is available from Trelleborg Pipe Seals on request.

The Forsheda G-ring is designed primarily for non pressure concrete pipe lines. If the joint is correctly designed it can also be used for pressure pipe lines. The compression of the seal varies according to the joint gap and tolerance chosen.

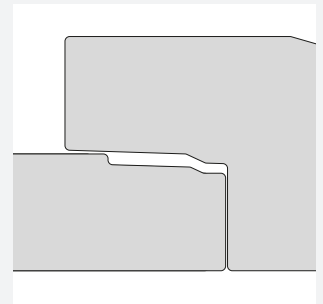


Typical joint design

The teardrop shaped profile provides an effective locking force which prevents the pipes from separating once jointed.

SEAL PERFORMANCE

The Forsheda 101 seal meets all relevant current European standards. Joint performance is dependent on dimensional accuracy and surface finish of socket and spigot. Test reports are available from Trelleborg Pipe Seals on request.



MATERIAL

Synthetic SBR or EPDM rubber

Hardness 40±5 IRHD

Approved in accordance with EN 681-1

Protected against ozone

Oil resistant grades are available on request

QUALITY ASSURANCE

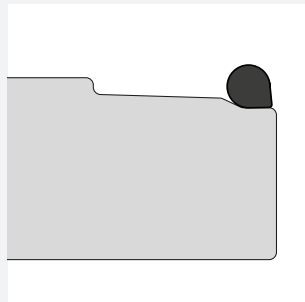
ISO 9001

British Standard "Kitemark"

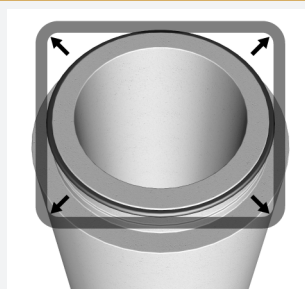
CE-marking

JOINT ASSEMBLY

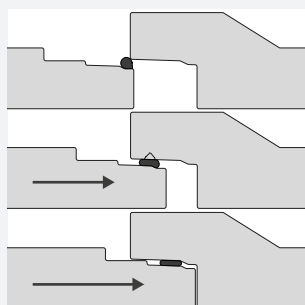
Ensure both spigot and socket are clean. Stretch the seal onto the spigot with the point of the G-ring facing outward.



Equalize the stress in the seal by lifting and realising at a few point. The seal must sit evenly all around the pipe.

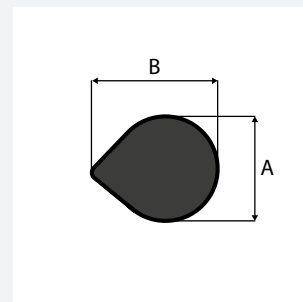


Centre the pipes and assemble by using suitable equipment. The G-ring will roll over and seat itself in the socket.



SEAL MARKING AND BOX LABELS

Each seal is marked with seal dimension and the date of manufacture. The box is labelled with the corresponding data.



EXAMPLES OF SIZES (MM)

A	B
10.0	12.0
12.0	14.4
13.0	15.6
14.0	16.8
16.0	19.2
18.0	21.6
20.0	24.0
22.0	26.4
24.0	28.8
28.0	33.6

Forsheda 101 is manufactured in a large number of profiles and diameters.

Please contact Trelleborg Pipe Seals for more information, technical advice and joint design recommendations to meet your performance requirements.

Pipes and manholes with Forsheda 101 shall always be laid in accordance with applicable standards and regulations.

Examples of authorities Trelleborg Pipe Seals cooperates with:



WWW.TRELLEBORG.COM/PIPE-SEALS