



# Rapid Development Center



**PARTNERING TO BRING PRODUCTS TO MARKET FASTER**

**Trelleborg Healthcare & Medical helps medical device companies navigate the development process from concept to market launch. Our innovative Rapid Development Center brings together experts from design, prototyping and production, to offer a unique service that optimizes both time to market and the end product.**

Ninety percent of manufacturing costs are designed into a product or component. Therefore, a manufacturable design combined with a smooth transition to prototyping and global production is critical to the success and profitability of a project. Customers who involve Trelleborg experts at every stage of a project benefit from reduced costs and faster, more efficient market introduction.

The Rapid Development Center provides access to a team of engineers with in-depth experience in the medical device and pharmaceutical industries, who build the project with customers from the ground up.

## Service Portfolio

The Rapid Development Center offers a full range of services, including:

- Advice on Design for Manufacturability (DfM) helps make the product more cost-effective
- Mold Flow Analysis
- Extensive in-house toolmaking capabilities
- Prototypes within 24 hours
- Production quality steel-tooling
- Build to 3D CAD models
- Raw material traceability
- ISO certified manufacturing facilities that meet US Food and Drug Administration (FDA) and European medical device requirements
- Class 7 cleanrooms



Customers have access to dedicated equipment for rapid development work

## COLLABORATING EVERY STEP OF THE WAY

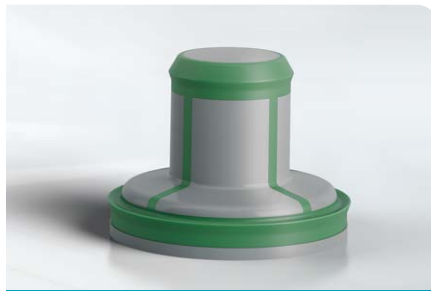
Design and material choices can have a long-term impact on manufacturing costs and efficiencies. By working together with customers right from the start of a project, Trelleborg Healthcare & Medical experts can help save customers time, reduce costs, and produce premium-quality products, while keeping an eye on the goal of a smooth transition to serial production. In addition, adherence to DfM principles ensures efficient and cost-effective processes at high volumes.

**Our dedicated team of engineers works hand-in-hand with customers to:**



### DESIGN

Support product development and identify potential improvements at the design stage. This has significant, long-term effects on the material and production costs of the product.



### PROTOTYPE

Create samples with a focus on prototyping parts that are as close as possible to the final process in terms of tooling used and the build-quality achieved.



### MANUFACTURE

Plan the final steps towards serial production, including processes and protocols for rapid scaling to fully automated production in accordance with all legal and regulatory requirements.

Working with Trelleborg Healthcare & Medical makes life simpler for the customer by providing a single point of contact with a group of experts ready to be brought into the project as needed. The ultimate goal of every Rapid Development Center project is to assist the customer in bringing their product to market swiftly and efficiently, to optimize the long-term viability and profitability of the finished product.

