



Secure Camlock

MIL C-27487

CAMLOCK SÉCURISÉ CAMLOCK SECURISADO

Secure Camlock MIL C-27487

MATERIAL MATIÈRE MATERIAL

 **SS** = Stainless steel **Inox**

SIZE DIMENSIONS DIMENSIONES

From DN 3/4" to DN 4"

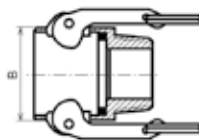
THREAD FILETAGE ROSCA

BSPP/NF ISO 228-1

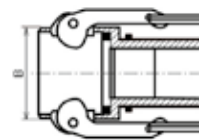
GASKETS JOINTS JUNTA

NBR

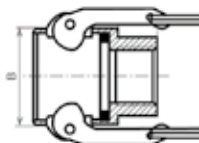
COUPLER



TYPE BW



TYPE DL Smooth shank






TYPE D Female

DN mm	B
15	32
20	42
25	46
32	56
40	64
50	76
65	87
80	103
100	132
125	162
150	194



■ AL = Aluminium
 ■ BR = Brass **Laiton Latón**
 ■ ST = Steel **Acier Acero**
 ■ SS = Stainless steel **Inox**
 ■ PP = Polypropylene

Trelleborg Fittings 2015

		ID coupling Diam. raccord Diam. racor	ID shank Diam. douille Diam. espiga	Ref.	Notes
 <p>Coupler BW. Coupleur BW. <i>Acoplador BW.</i></p>	SS 316	3/4"	26,7	SAFBW19	
		1"	33,7	SAFBW25	
		1"1/4	42,2	SAFBW32	
		1"1/2	48,3	SAFBW40	
		2"	60,3	SAFBW50	
		2"1/2	76,1	SAFBW65	
		3"	88,9	SAFBW80	
		4"	114,3	SAFBW100	
 <p>Secure type C with smooth shank DIN 2817. Type C douille lisse DIN 2817. <i>Tipo C caña lisa DIN 2817.</i></p>	SS 316	3/4"		SAFDL19	
		1"		SAFDL25	
		1"1/4		SAFDL32	
		1"1/2		SAFDL40	
		2"		SAFDL50	
		2"1/2		SAFDL65	
		3"		SAFDL80	
		4"		SAFDL100	
 <p>Secure type D DIN 2828. Type D DIN 2828. <i>Tipo D DIN 2828.</i></p>	SS 316	3/4"		SAFD19	
		1"		SAFD25	
		1"1/4		SAFD32	
		1"1/2		SAFD40	
		2"		SAFD50	
		2"1/2		SAFD65	
		3"		SAFD80	
		4"		SAFD100	