



Camlock

MIL C-27487

Camlock MIL C-27487

MATERIAL MATIÈRE MATERIAL

AL = Aluminium

BR = Brass *Laiton Latón*

SS = Stainless steel *Inox*

PP = Polypropylene

On request *Sur demande Bajo pedido*

SIZE DIMENSIONS DIMENSIONES

From DN 1/2" to DN 6"

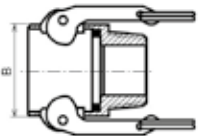
THREAD FILETAGE ROSCA

BSPP/NF ISO 228-1

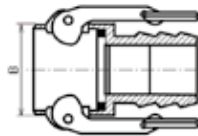
GASKETS JOINTS JUNTA

NBR

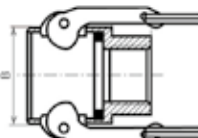
COUPLER



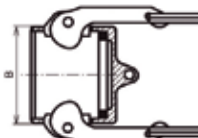
TYPE B Male



TYPE C Hose shank



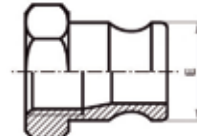
TYPE D Female



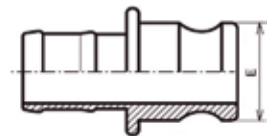
TYPE DC Dust plug

DN mm	B
15	32
20	42
25	46
32	56
40	64
50	76
65	87
80	103
100	132
125	162
150	194

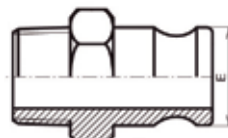
ADAPTER



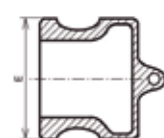
TYPE A Female



TYPE E Hose shank



TYPE F Male



TYPE DP Dust plug

DN mm	E
15	23,8
20	32,1
25	36,7
32	45,5
40	53,4
50	63
65	75,8
80	91,5
100	119,5
125	146
150	175,9

■ AL = Aluminium
 ■ BR = Brass *Laiton Latón*
■ ST = Steel *Acier Acero*
■ SS = Stainless steel *Inox*
■ PP = Polypropylene

Trelleborg Fittings 2015

		ID coupling Diam. raccord Diam. racor	ID shank Diam. douille Diam. espiga	Ref.	Notes
 <p>Type A. Type A. Tipo A.</p>	AL	1/2"		510 16 50	
		3/4"		510 16 51	
		1"		510 16 52	
		1"1/4		510 16 53	
		1"1/2		510 16 54	
		2"		510 16 55	
		2"1/2		510 16 56	
		3"		510 16 57	
		4"		510 16 58	
		5"		510 16 59	
 <p>Type B. Type B. Tipo B.</p>	AL	1/2"		510 16 61	
		3/4"		510 16 62	
		1"		510 16 63	
		1"1/4		510 16 64	
		1"1/2		510 16 65	
		2"		510 16 66	
		2"1/2		510 16 67	
		3"		510 16 68	
		4"		510 16 69	
		5"		510 16 70	
 <p>Type C. Type C. Tipo C.</p>	AL	1/2"		510 16 72	
		3/4"		510 16 73	
		1"		510 16 74	
		1"1/4		510 16 75	
		1"1/2		510 16 76	
		2"		510 16 77	
		2"1/2		510 16 78	
		3"		510 16 79	
		4"		510 16 80	
		5"		510 16 81	
 <p>Type D. Type D. Tipo D.</p>	AL	1/2"		510 16 83	
		3/4"		510 16 84	
		1"		510 16 85	
		1"1/4		510 16 86	
		1"1/2		510 16 87	
		2"		510 16 88	
		2"1/2		510 16 89	
		3"		510 16 90	
		4"		510 16 91	
		5"		510 16 92	
6"		510 16 93			

■ AL = Aluminium
 ■ BR = Brass *Laiton Latón*
 ■ ST = Steel *Acier Acero*
 ■ SS = Stainless steel *Inox*
 ■ PP = Polypropylene

Trelleborg Fittings 2015

		ID coupling Diam. raccord Diam. racor	ID shank Diam. douille Diam. espiga	Ref.	Notes
 <p>Type E. Type E. Tipo E.</p>	AL	1/2"		510 16 94	
		3/4"		510 16 95	
		1"		510 16 96	
		1"1/4		510 16 97	
		1"1/2		510 16 98	
		2"		510 16 99	
		2"1/2		510 17 00	
		3"		510 17 01	
		4"		510 17 02	
		5"		510 17 03	
 <p>Type F. Type F. Tipo F.</p>	AL	6"		510 17 04	
		1/2"		510 17 05	
		3/4"		510 17 06	
		1"		510 17 07	
		1"1/4		510 17 08	
		1"1/2		510 17 09	
		2"		510 17 10	
		2"1/2		510 17 11	
		3"		510 17 12	
		4"		510 17 13	
 <p>Type DC. Type DC. Tipo DC.</p>	AL	5"		510 17 14	
		6"		510 17 15	
		1/2"		510 17 16	
		3/4"		510 17 17	
		1"		510 17 18	
		1"1/4		510 17 19	
		1"1/2		510 17 20	
		2"		510 17 21	
		2"1/2		510 17 22	
		3"		510 17 23	
 <p>Type DP. Type DP. Tipo DP.</p>	AL	4"		510 17 24	
		5"		510 17 25	
		6"		510 17 26	
		1/2"		510 17 27	
		3/4"		510 17 28	
		1"		510 17 29	
		1"1/4		510 17 30	
		1"1/2		510 17 31	
		2"		510 17 32	
		2"1/2		510 17 33	
3"		510 17 34			
4"		510 17 35			
5"		510 17 36			
6"		510 17 37			

■ AL = Aluminium
 ■ BR = Brass *Laiton Latón*
■ ST = Steel *Acier Acero*
■ SS = Stainless steel *Inox*
■ PP = Polypropylene

Trelleborg Fittings 2015

		ID coupling Diam. raccord Diam. racor	ID shank Diam. douille Diam. espiga	Ref.	Notes
 <p>Type A. Type A. Tipo A.</p>	SS 316	1/2"		510 13 96	
		3/4"		510 13 97	
		1"		510 13 98	
		1"1/4"		510 13 99	
		1"1/2"		510 14 00	
		2"		510 14 01	
		2"1/2"		510 14 02	
		3"		510 14 03	
		4"		510 14 04	
		5"		510 15 87	
 <p>Type B. Type B. Tipo B.</p>	SS 316	1/2"		510 14 26	
		3/4"		510 14 27	
		1"		510 14 28	
		1"1/4"		510 14 29	
		1"1/2"		510 14 30	
		2"		510 14 31	
		2"1/2"		510 14 32	
		3"		510 14 33	
		4"		510 14 34	
		5"		510 15 90	
 <p>Type C. Type C. Tipo C.</p>	SS 316	1/2"		011 74 30	
		3/4"		011 74 31	
		1"		011 74 32	
		1"1/4"		011 74 33	
		1"1/2"		011 74 34	
		2"		011 74 35	
		2"1/2"		011 74 36	
		3"		011 74 37	
		4"		011 74 38	
		5"		510 15 85	
 <p>Type D. Type D. Tipo D.</p>	SS 316	1/2"		510 14 16	
		3/4"		510 14 17	
		1"		510 14 18	
		1"1/4"		510 14 19	
		1"1/2"		510 14 20	
		2"		510 14 21	
		2"1/2"		510 14 22	
		3"		510 14 23	
		4"		510 14 24	
		5"		510 15 89	
6"		510 14 25			

AL = Aluminium BR = Brass Laiton Latón ST = Steel Acier Acero SS = Stainless steel Inox PP = Polypropylene

Trelleborg Fittings 2015

		ID coupling Diam. raccord Diam. racor	ID shank Diam. douille Diam. espiga	Ref.	Notes
 <p>Secure type D DIN 2828. Type D sécurisé DIN 2828. <i>Tipo D securizado DIN 2828.</i></p>	SS 316	3/4"		SAFD19	
		1"		SAFD25	
		1"1/4		SAFD32	
		1"1/2		SAFD40	
		2"		SAFD50	
		2"1/2		SAFD65	
		3"		SAFD80	
		4"		SAFD100	
 <p>Type E. Type E. Tipo E.</p>	SS 316	1/2"		011 74 43	
		3/4"		011 74 44	
		1"		011 74 45	
		1"1/4		011 74 46	
		1"1/2		011 74 47	
		2"		011 74 48	
		2"1/2		011 74 49	
		3"		011 74 50	
		4"		011 74 51	
		5"		510 15 86	
 <p>Type F. Type F. Tipo F.</p>	SS 316	1/2"		510 14 06	
		3/4"		510 14 07	
		1"		510 14 08	
		1"1/4		510 14 09	
		1"1/2		510 14 10	
		2"		510 14 11	
		2"1/2		510 14 12	
		3"		510 14 13	
		4"		510 14 14	
		5"		510 15 88	
 <p>Adaptor BW. Adapteur BW. <i>Adaptor BW.</i></p>	SS 316	1/2"	21,3	510 20 11	
		3/4"	26,9	510 20 12	
		1"	33,7	510 20 13	
		1"1/4	42,2	510 20 14	
		1"1/2	48,3	510 20 15	
		2"	60,3	510 20 16	
		2"1/2	76,1	510 20 17	
		3"	88,9	510 20 18	
		4"	114,3	510 20 19	
		5"	139,7	510 69 97	






AL = Aluminium BR = Brass Laiton Latón ST = Steel Acier Acero SS = Stainless steel Inox PP = Polypropylene

Trelleborg Fittings 2015

		ID coupling Diam. raccord Diam. racor	ID shank Diam. douille Diam. espiga	Ref.	Notes
 <p>Coupler BW. Coupleur BW. Acoplador BW.</p>	SS 316	1/2"	21,3	510 20 20	
		3/4"	26,9	510 20 21	
		1"	33,7	510 20 22	
		1*1/4	42,2	510 20 23	
		1*1/2	48,3	510 20 24	
		2"	60,3	510 20 25	
		2*1/2	76,1	510 20 26	
		3"	88,9	510 20 27	
		4"	114,3	510 20 28	
		5"	139,7	510 69 96	
 <p>Secure coupler BW. Coupleur BW sécurisé. Acoplador securizado BW.</p>	SS 316	3/4"	26,7	SAFBW19	
		1"	33,7	SAFBW25	
		1*1/4	42,2	SAFBW32	
		1*1/2	48,3	SAFBW40	
		2"	60,3	SAFBW50	
		2*1/2	76,1	SAFBW65	
		3"	88,9	SAFBW80	
4"	114,3	SAFBW100			
 <p>Type DC. Type DC. Tipo DC.</p>	SS 316	1/2"		510 14 46	
		3/4"		510 14 47	
		1"		510 14 48	
		1*1/4		510 14 49	
		1*1/2		510 14 50	
		2"		510 14 51	
		2*1/2		510 14 52	
		3"		510 14 53	
		4"		510 14 54	
		5"		510 15 92	
 <p>Type DP. Type DP. Tipo DP.</p>	SS 316	1/2"		510 14 36	
		3/4"		510 14 37	
		1"		510 14 38	
		1*1/4		510 14 39	
		1*1/2		510 14 40	
		2"		510 14 41	
		2*1/2		510 14 42	
		3"		510 14 43	
		4"		510 14 44	
		5"		510 15 91	
6"		510 14 45			

AL = Aluminium BR = Brass Laiton Latón ST = Steel Acier Acero SS = Stainless steel Inox PP = Polypropylene

Trelleborg Fittings 2015

		ID coupling Diam. raccord Diam. racor	ID shank Diam. douille Diam. espiga	Ref.	Notes
 <p>Type A. Type A. Tipo A.</p>	BR	1/2"		510 20 81	
		3/4"		510 20 82	
		1"		510 20 83	
		1"1/4		510 20 84	
		1"1/2		510 20 85	
		2"		510 20 86	
		2"1/2		510 20 87	
		3"		510 20 88	
		4"		510 20 89	
 <p>Type B. Type B. Tipo B.</p>	BR	1/2"		510 20 92	
		3/4"		510 20 93	
		1"		510 20 94	
		1"1/4		510 20 95	
		1"1/2		510 20 96	
		2"		510 20 97	
		2"1/2		510 20 98	
		3"		510 20 99	
		4"		510 21 00	
 <p>Type C. Type C. Tipo C.</p>	BR	1/2"		510 21 03	
		3/4"		510 21 04	
		1"		510 21 05	
		1"1/4		510 21 06	
		1"1/2		510 21 07	
		2"		510 21 08	
		2"1/2		510 21 09	
		3"		510 21 10	
		4"		510 21 11	
 <p>Type D. Type D. Tipo D.</p>	BR	1/2"		510 21 14	
		3/4"		510 21 15	
		1"		510 21 16	
		1"1/4		510 21 17	
		1"1/2		510 21 18	
		2"		510 21 19	
		2"1/2		510 21 20	
		3"		510 21 21	
		4"		510 21 22	
 <p>Type E. Type E. Tipo E.</p>	BR	1/2"		510 21 25	
		3/4"		510 21 26	
		1"		510 21 27	
		1"1/4		510 21 28	
		1"1/2		510 21 29	
		2"		510 21 30	
		2"1/2		510 21 31	
		3"		510 21 32	
		4"		510 21 33	

For any other need, do consult us.
 Pour tout autre besoin, nous consulter.
 Para otras necesidades, consultarnos.






■ AL = Aluminium
 ■ BR = Brass *Laiton Latón*
■ ST = Steel *Acier Acero*
■ SS = Stainless steel *Inox*
■ PP = Polypropylene

Trelleborg Fittings 2015

		ID coupling Diam. raccord Diam. racor	ID shank Diam. douille Diam. espiga	Ref.	Notes
 <p>Type F. Type F. <i>Tipo F.</i></p>	BR	1/2"		510 21 36	
		3/4"		510 21 37	
		1"		510 21 38	
		1"1/4		510 21 39	
		1"1/2		510 21 40	
		2"		510 21 41	
		2"1/2		510 21 42	
		3"		510 21 43	
 <p>Type DC. Type DC. <i>Tipo DC.</i></p>	BR	1/2"		510 21 47	
		3/4"		510 21 48	
		1"		510 21 49	
		1"1/4		510 21 50	
		1"1/2		510 21 51	
		2"		510 21 52	
		2"1/2		510 21 53	
		3"		510 21 54	
 <p>Type DP. Type DP. <i>Tipo DP.</i></p>	BR	1/2"		510 21 58	
		3/4"		510 21 59	
		1"		510 21 60	
		1"1/4		510 21 61	
		1"1/2		510 21 62	
		2"		510 21 63	
		2"1/2		510 21 64	
		3"		510 21 65	
 <p>Pin. Epingle. <i>Pinza.</i></p>	SS 304	1/2" - 1"1/4		510 50 03	
		1"1/2 - 6"		510 50 04	
 <p>Pack Handle/Ping/Ring. Pack Goupille/Anneau/Axe. <i>Pack Clavija/Eje/Anillo.</i></p>	SS 304	15 - 20		510 22 43	
		25		510 22 44	
		32 - 65		510 22 45	
		80 - 125		510 22 46	
		150		510 22 47	

■ AL = Aluminium
 ■ BR = Brass *Laiton Latón*
 ■ ST = Steel *Acier Acero*
 ■ SS = Stainless steel *Inox*
 ■ PP = Polypropylene

Trelleborg Fittings 2015

		ID coupling Diam. raccord Diam. racor	ID shank Diam. douille Diam. espiga	Ref.	Notes
 <p>Gasket. Joint. Junta.</p>	NBR	1/2"		510 14 56	
		3/4"		510 14 57	
		1"		510 14 58	
		1"1/4"		510 14 59	
		1"1/2"		510 14 60	
		2"		510 14 61	
		2"1/2"		510 14 62	
		3"		510 14 63	
		4"		510 14 64	
		5"		510 20 00	
 <p>Gasket. Joint. Junta.</p>	EPDM	6"		510 14 65	
		1/2"		510 22 81	
		3/4"		510 22 82	
		1"		510 22 83	
		1"1/4"		510 22 84	
		1"1/2"		510 22 85	
		2"		510 22 86	
		2"1/2"		510 22 87	
		3"		510 22 88	
		4"		510 22 89	
 <p>Gasket. Joint. Junta.</p>	FPM	5"		510 22 90	
		6"		510 22 91	
		1/2"		510 14 66	
		3/4"		510 14 67	
		1"		510 14 68	
		1"1/4"		510 14 69	
		1"1/2"		510 14 70	
		2"		510 14 71	
		2"1/2"		510 14 72	
		3"		510 14 73	
 <p>Gasket. Joint. Junta.</p>	FEP /Sili- cone	4"		510 14 74	
		5"		510 22 80	
		6"		510 14 75	
		1/2"		510 14 94	
		3/4"		510 14 95	
		1"		510 14 96	
		1"1/4"		510 14 97	
		1"1/2"		510 14 98	
		2"		510 14 99	
		2"1/2"		510 15 00	
 <p>Gasket. Joint. Junta.</p>	FPM/ PFTE	3"		510 15 01	
		4"		510 15 02	
		1/2"		510 14 85	
		3/4"		510 14 86	
		1"		510 14 87	
		1"1/4"		510 14 88	
		1"1/2"		510 14 89	
		2"		510 14 90	
		2"1/2"		510 14 91	
		3"		510 14 92	
4"		510 14 93			