

The background of the entire page is a close-up, high-angle photograph of a flexible lining system. It shows a dark, woven fabric mesh with a repeating pattern of small, rounded rectangular cells. The mesh is laid out on a light-colored, possibly metallic, surface, with some folds and shadows visible, emphasizing its flexibility and texture.

Flexible Lining Systems



A SELF ENERGISED SOLUTION

Trelleborg Engineered Products Australia has developed a Flexible Lining System to allow a free flow of product in high capacity applications and overcome build up problems.

The simple to install system uses self energised rubber to keep wet sticky materials travelling through chutes and simplifies the replacement of worn panels during maintenance. A clearer chute means improved efficiencies to directly improve your bottom line.

FOR PRODUCT PROCESS BUILDING

- Australian made and designed
- Self energised rubber wall
- Easy installation
- Reduced maintenance and downtime
- OH&S compliant
- Selection of both rubber and composite installation types available
- Detailed installation drawings provided
- AU Patent: 2008100415
- USA Patent: US7,938244B2.

MODULAR SYSTEM

Flexible Lining System was conceived as a modular system with simplified installation to assist throughout the life of the chute and in particular for future re lines.

By only replacing the liners that are worn and with a choice of simple fixing methods (no bonding, welding or hot cutting required), long and costly re line times are a thing of the past.

NEW CHUTE DESIGN

- Fully detailed shop drawings supplied with delivery
- Our lining design is able to be utilised within existing fixing systems
- Flexible Lining Systems can be supplied as long as 2 meters. Stock lengths of 1500mm available.

EXISTING CHUTES

The Flexible Lining Systems is superior for retrofitting into your existing chutes to replace your current linings.

THE FLEXIBLE LINING SYSTEM CHUTE LINER

Developed with input from both operators and contractors, the Trelleborg Flexible Lining System Chute Liner provides an easy install system that is flexible enough to be used across you plants chutes and material handling systems, wherever stick up is a problem.

With the backing of one of the world's largest specialist polymer businesses, you can be assured that the whole system has been engineered with the highest possible level of quality and commitment to provide the customer with a solution that will continue to payback well after all other lining systems have worn themselves out.

Flexible Lining System is available with a choice of polymeric compounds and when combined with optional facing materials, offers the designer, maintenance planner and mine owners the optimal wear resistant anti-stick chute liner.

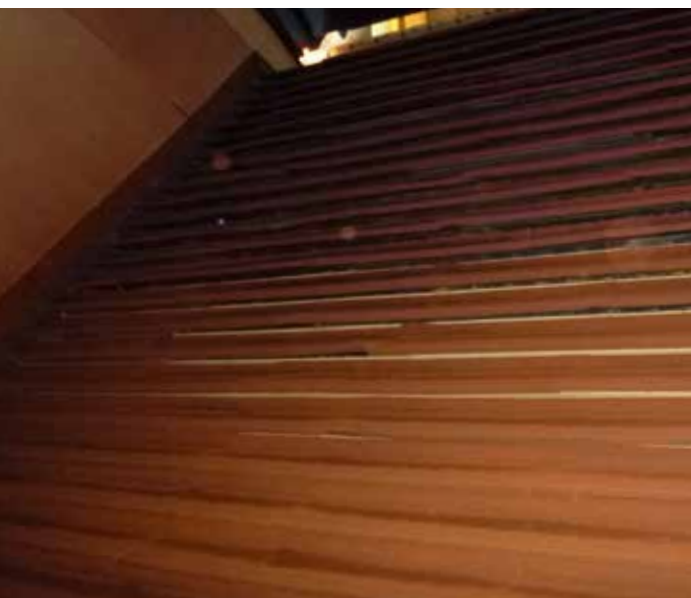
Site reference can be supplied upon request.



Typical chute lining arrangement



Typical cross section



FINES CHUTES

With over 100 years of polymer knowledge and application experience Trelleborg is a market leader in developing specialty rubber compounds for use in the most arduous applications.

Flexible Lining Systems case study

INITIAL INSTALLATION

As a response to the requirement for improved wear performance in the product screens fines chutes, Trelleborg redesigned the rubber Flexible Lining System and incorporated alumina ceramic molded into the rubber.

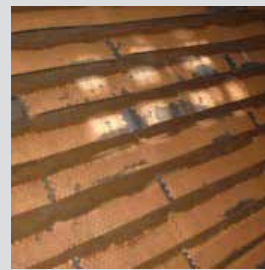
Factoring in some localised disbonding and wear and tear, these issues are only representative of approximately <10% of the surface area of installed rubber/ceramic Flexible Lining Systems – the majority of the liners are performing very well.

3 MONTHS AFTER

The image to the right shows some localized wear and tear where there is no ceramic protection - the ceramics surrounding this area are performing very well and showing no signs of disbonding.

31 WEEKS IN SERVICE

During the shut, it is being observed that wear and tear in localised areas is occurring, some ceramic disbonding has occurred, however the majority of the Flexible Lining Systems is still performing as designed.





Trelleborg is a world leader in engineered polymer solutions that seal, damp and protect critical applications in demanding environments. Its innovative solutions accelerate performance for customers in a sustainable way.

WWW.TRELLEBORG.COM

Scan here to view more product information



Head Office

Trelleborg Engineered Products Australia Pty. Ltd.
127, Pilbara Street, Welshpool, Perth, WA 6106.

Tel +61 (0)8 9256 6000, Fax +61 (0)8 9353 5990, Email toc.pth.sales@trelleborg.com, www.trelleborg.com/fluidhandling

Western Australia

Trelleborg Engineered Products Australia Pty. Ltd.
25, Glassford Road, Kewdale, Perth, WA 6105.

Tel +61 (0)8 9256 6000, Fax +61 (0)8 9353 5990, Email toc.pth.sales@trelleborg.com, www.trelleborg.com/fluidhandling

Queensland

Trelleborg Engineered Products Australia Pty. Ltd.
17, Business Drive, Narangba, Brisbane, QLD 4504.

Tel +61 (0)7 3866 7444, Fax +61 (0)7 3263 4912, Email toc.pth.sales@trelleborg.com, www.trelleborg.com/fluidhandling