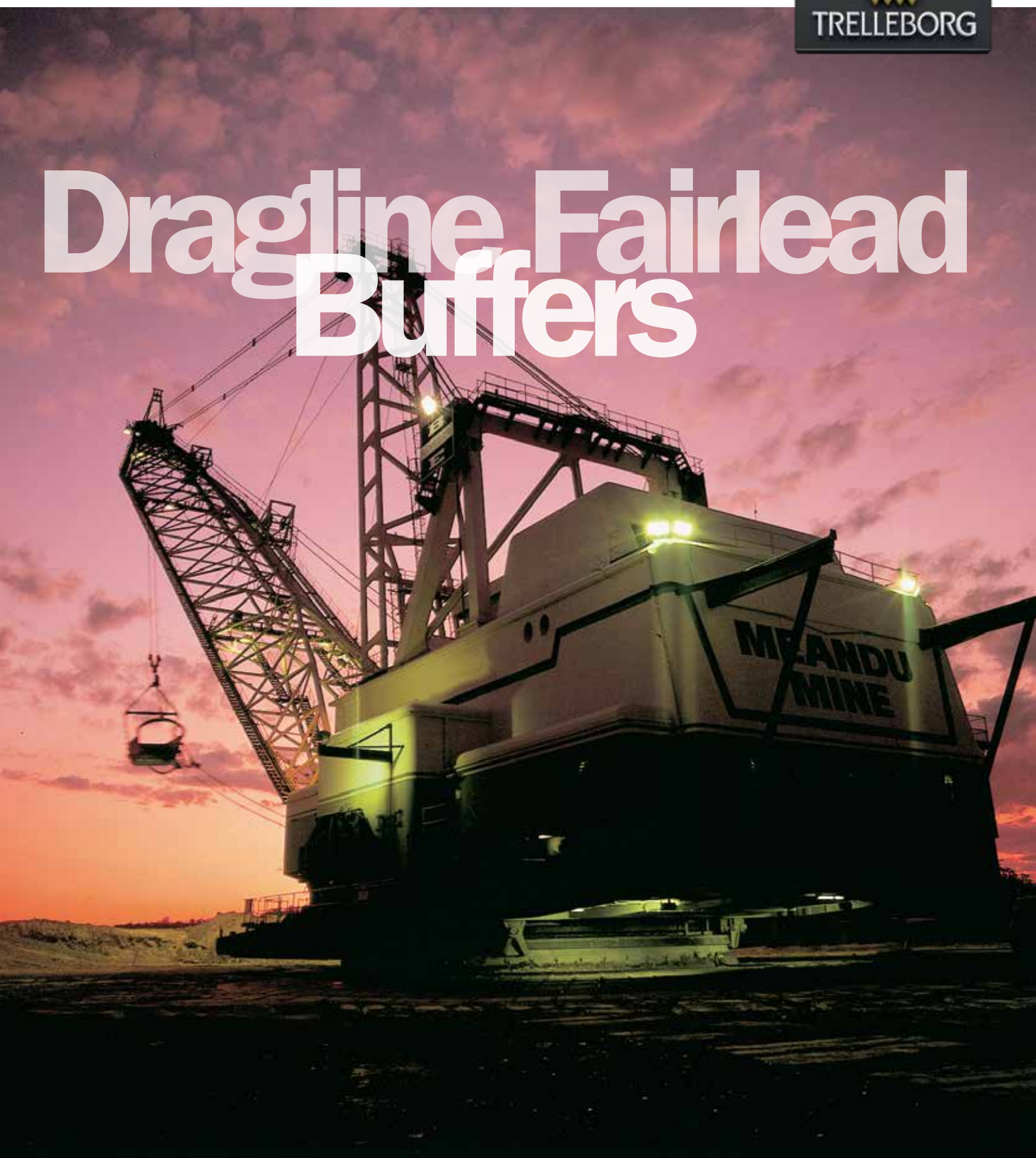


Dragline Fairlead Buffers



Mining and Mineral Processing
Dragline Fairlead Buffers
www.trelleborg.com/fluidhandling

DRAGLINE FAIRLEAD BUFFERS

Trelleborg manufacture and supply Fairlead Buffers for draglines. The buffers are usually supplied in pairs and designed to fit on models of either the Bucyrus Erie or Marion Draglines, replacing the "Snubber" brake system on the Marion or the mechanical tie on the Bucyrus. Our buffers have been operating on draglines for in excess of twenty years without any failures.

The Fairlead Buffers are manufactured from a specially compounded soft rubber that replaces the rigid mechanical separator system and provides superior resilience, dampening and durability. This same rubber compound has been successfully used in our marine fenders, which have a design life in excess of 15 years.

They are manufactured by full compression moulding to ensure integrity and long term reliability. Other manufacturing processes do not achieve the same integrity.

Trelleborg's Fairlead Buffers are designed to provide a long life, maintenance free solution that reduces down time and associated costs by limiting operational shock on the Fairleads, Sheaves and their attendant systems:

- Less transmitted shock loads from Fairleads
- Protect sheaves and plates

- Enable the fairlead unit to operate effectively under compression and expansion
- Reduce jarring in operation
- Greatly reduce maintenance costs and down time.

SHEAVE MODIFICATION

Proven sheave modification systems are available for all machines.

INSTALLATIONS IN AUSTRALIA

- South Blackwater
- BHP Peak Downs
- BHP Moura
- BHP Norwich Park
- BHP Blackwater
- Callide Coalfields
- Peabody Resources - Ravensworth Mine
- Blair Athol Mine

INSTALLATIONS IN SOUTH AFRICA

- Billiton Energy (various mines)
- Glencore Optimum field
- Glencore Tweefontein field
- Glencore iMpunzi field
- Anglo American New Vaal Colliery
- Anglo American Landau Colliery

INSTALLATIONS IN UNITED STATES

- Mosaic Phosphate Florida

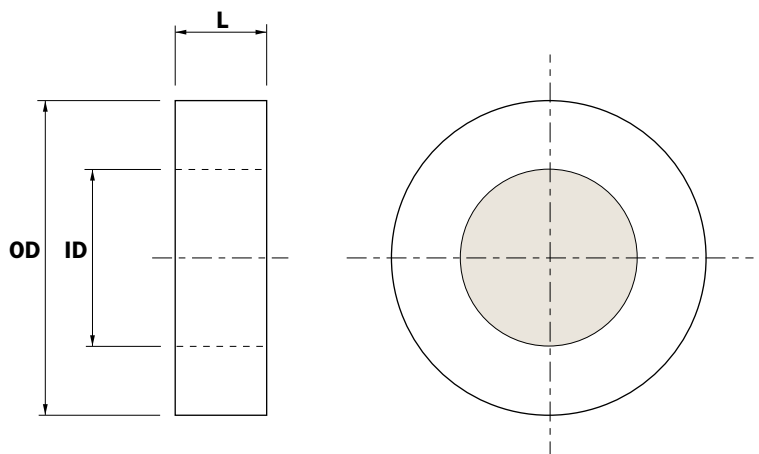


In this configuration, no maintenance of any kind has been necessary since installation.

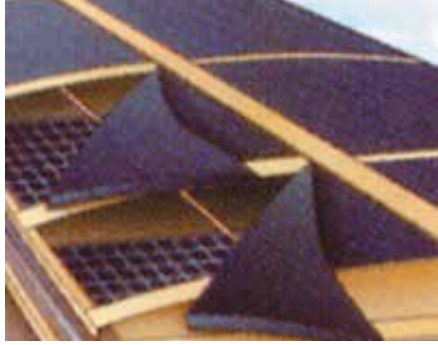


Note the absence of moving parts and lubrication points.

OD mm	ID mm	L mm	Weight kg	Weight LBS
600	300	260	68	150
1050 ±21	570 ±11	380 ±10	256	565
1220 ±30	760 ±15	380 ±10	300	660
2100 ±42	1050 ±21	565 ±11	1615	3570



MARION MODEL 8050



UN-MODIFIED
Constant shock requires frequent maintenance of mechanical connections & lubrication of bearings.



MODIFIED
View shows simple method of replacing spacer bar with bolted frames and buffers held by long bolts.

BUCYRUS MODEL 1570



General configuration of modified sheaves.



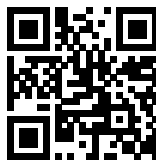
Simple on site modification by the addition of three plates to each Sheave housing, with long bolt fasteners. These buffers have been in service since their installation and display no signs of damage or deterioration.



Trelleborg is a world leader in engineered polymer solutions that seal, damp and protect critical applications in demanding environments. Its innovative solutions accelerate performance for customers in a sustainable way.

WWW.TRELLEBORG.COM

Scan here to view more product information



Head Office

Trelleborg Engineered Products Australia Pty. Ltd.
127, Pilbara Street, Welshpool, Perth, WA 6106.

Tel +61 (0)8 9256 6000, Fax +61 (0)8 9353 5990, Email toc.pth.sales@trelleborg.com, www.trelleborg.com/fluidhandling

Western Australia

Trelleborg Engineered Products Australia Pty. Ltd.
25, Glassford Road, Kewdale, Perth, WA 6105.

Tel +61 (0)8 9256 6000, Fax +61 (0)8 9353 5990, Email toc.pth.sales@trelleborg.com, www.trelleborg.com/fluidhandling

Queensland

Trelleborg Engineered Products Australia Pty. Ltd.
17, Business Drive, Narangba, Brisbane, QLD 4504.

Tel +61 (0)7 3866 7444, Fax +61 (0)7 3263 4912, Email toc.pth.sales@trelleborg.com, www.trelleborg.com/fluidhandling