

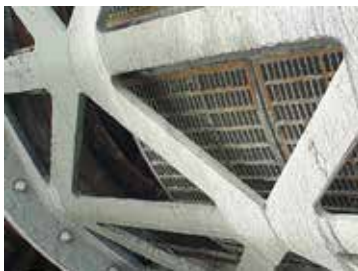
# Trommels and Trommel Panels

**Mining and Mineral Processing**  
Trommels and Trommel Panels  
[www.trelleborg.com/fluidhandling](http://www.trelleborg.com/fluidhandling)

# TROMMELS

Trelleborg supply a range of forwarding and retaining spirals/baffles for use in AG/SAG, ball mills and scrubbers.

Trelleborg technical personnel are available for onsite consultations to work with you on the placement of spirals and aperture configurations to optimise the efficiency of the trommel.



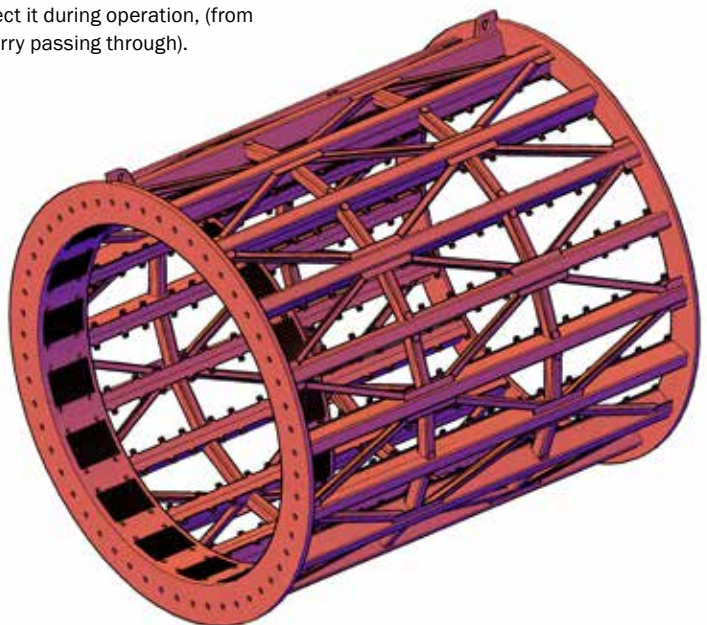
## TROMMELS

Trelleborg Trommel frames are designed and analysed under specific load conditions using the Finite Element Analysis (FEA) method to check the load and stresses on the structure.

The trommel frame is lined with a wear resistant rubber which is vulcanized onto the steel frame to protect it during operation, (from the product and slurry passing through).

The encasement of the steel frame also protects the trommel from corrosion, brought about from the salinity/chemicals in the process water and the varied climate conditions.

Spiral 3D





# TROMMEL PANELS

Trelleborg Trommel Panels are application based and are tailor made to suit the operating parameters of the Milling circuit and the existing trommel frame design. The Trommel Panels are manufactured in a wide range of sizes, rubber compounds and aperture configurations to optimize the screening efficiency and wear life of the panel.

## TROMMEL PANELS

Trelleborg Trommel Panels are press moulded, with a built in relief angle on the aperture to reduce the likelihood of pegging.

Where the design permits, the panels may be supplied with forwarding or retaining spirals/baffles which are widely used in AG/SAG, ball mill or scrubbers applications.

Trelleborg Trommel Panels may be fixed in place using:

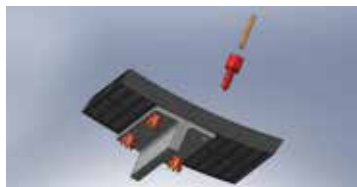
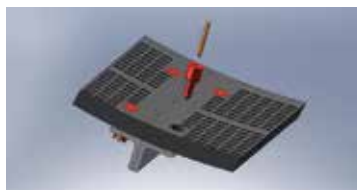
- Bolt down system
- Poly pin and sleeve system
- Clamp down bar system.



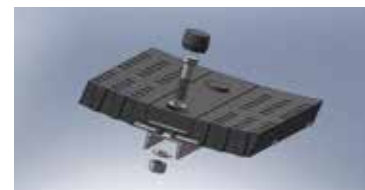
**Bolt down  
system**



**Poly pin and sleeve  
system**



**Clamp down bar  
system**



Trelleborg is a world leader in engineered polymer solutions that seal, damp and protect critical applications in demanding environments. Its innovative solutions accelerate performance for customers in a sustainable way.

[WWW.TRELLEBORG.COM](http://WWW.TRELLEBORG.COM)

**Scan here to view more product information**



Head Office

Trelleborg Engineered Products Australia Pty. Ltd.  
127, Pilbara Street, Welshpool, Perth, WA 6106.

Tel +61 (0)8 9256 6000, Fax +61 (0)8 9353 5990, Email [toc.pth.sales@trelleborg.com](mailto:toc.pth.sales@trelleborg.com), [www.trelleborg.com/fluidhandling](http://www.trelleborg.com/fluidhandling)

Western Australia

Trelleborg Engineered Products Australia Pty. Ltd.  
25, Glassford Road, Kewdale, Perth, WA 6105.

Tel +61 (0)8 9256 6000, Fax +61 (0)8 9353 5990, Email [toc.pth.sales@trelleborg.com](mailto:toc.pth.sales@trelleborg.com), [www.trelleborg.com/fluidhandling](http://www.trelleborg.com/fluidhandling)

Queensland

Trelleborg Engineered Products Australia Pty. Ltd.  
17, Business Drive, Narangba, Brisbane, QLD 4504.

Tel +61 (0)7 3866 7444, Fax +61 (0)7 3263 4912, Email [toc.pth.sales@trelleborg.com](mailto:toc.pth.sales@trelleborg.com), [www.trelleborg.com/fluidhandling](http://www.trelleborg.com/fluidhandling)