

The background image shows a large, heavy-duty metal component, likely a scraper blade, with a serrated edge. It is positioned on a reddish-brown dirt surface. The component is part of a larger machine, with a large cylindrical part visible above it. The scene is brightly lit, suggesting an outdoor mining or construction environment.

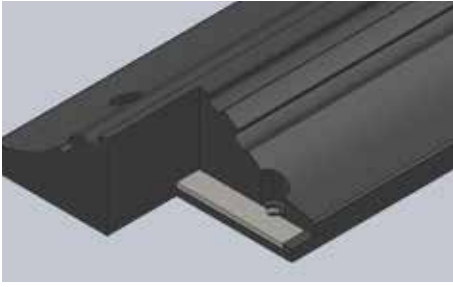
Anaconda Portable Park Ups

Mining and Mineral Processing
Anaconda Portable Park Ups
www.trelleborg.com/fluidhandling

ANACONDA PORTABLE PARK UPS

Trelleborg Anaconda Portable Park Ups were designed in conjunction with a major iron ore producer to ensure quick, easy and safe parking in any location of the mine site.





FEATURES INCLUDE

- Heavy duty solid rubber construction
- Easy and safe to transport
- Self securing, no need for any anchor points
- Steel reinforced tow point

TECHNICAL DATA

- Extruded specially formulated quality 65 Duro Rubber
- Weathering, ozone and ageing resistant compound
- Able to withstand the extremes of outback temperature
- Dimensions - 10 metre long x 500mm wide x 180mm high
- Weight - 200 kg



Trelleborg is a world leader in engineered polymer solutions that seal, damp and protect critical applications in demanding environments. Its innovative solutions accelerate performance for customers in a sustainable way.

WWW.TRELLEBORG.COM

Scan here to view more product information



Head Office

Trelleborg Engineered Products Australia Pty. Ltd.
127, Pilbara Street, Welshpool, Perth, WA 6106.

Tel +61 (0)8 9256 6000, Fax +61 (0)8 9353 5990, Email toc.pth.sales@trelleborg.com, www.trelleborg.com/fluidhandling

Western Australia

Trelleborg Engineered Products Australia Pty. Ltd.
25, Glassford Road, Kewdale, Perth, WA 6105.

Tel +61 (0)8 9256 6000, Fax +61 (0)8 9353 5990, Email toc.pth.sales@trelleborg.com, www.trelleborg.com/fluidhandling

Queensland

Trelleborg Engineered Products Australia Pty. Ltd.
17, Business Drive, Narangba, Brisbane, QLD 4504.

Tel +61 (0)7 3866 7444, Fax +61 (0)7 3263 4912, Email toc.pth.sales@trelleborg.com, www.trelleborg.com/fluidhandling