



BEERDIAL

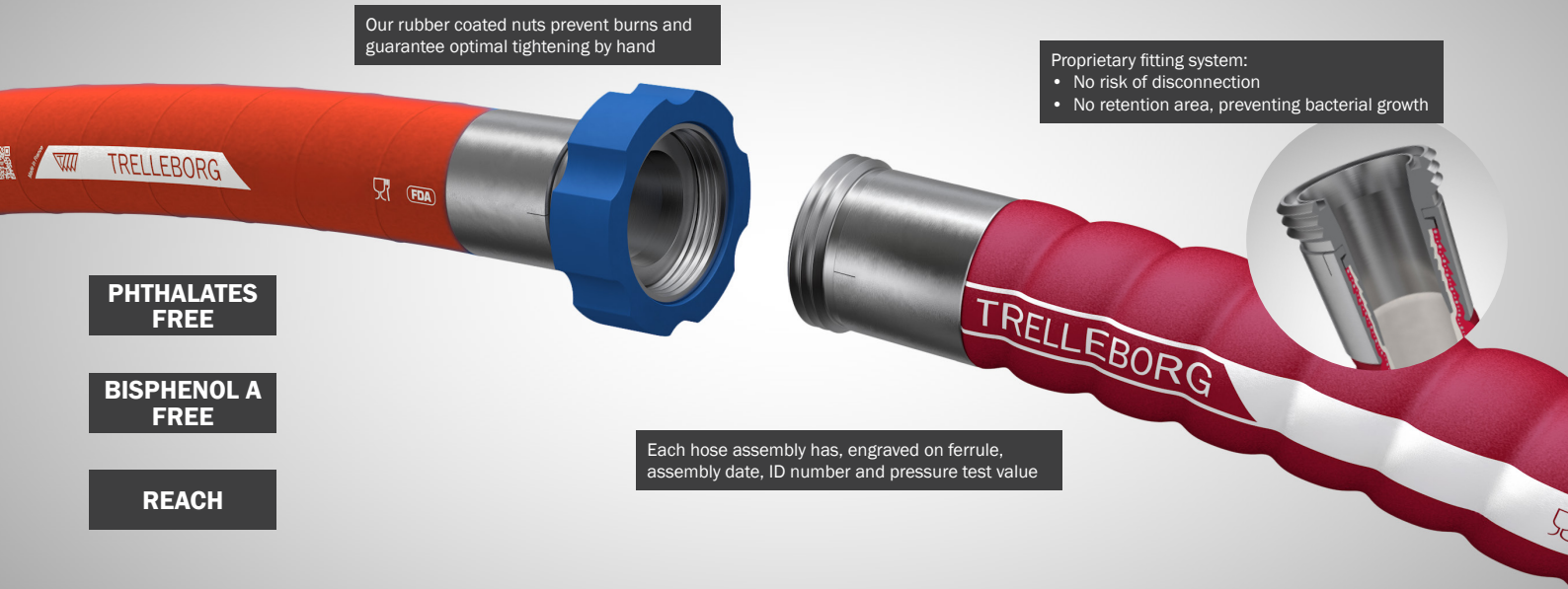
Our latest solution dedicated to the brewing industry

BEERDIAL

Our latest solution dedicated to the brewing industry

www.trelleborg.com/fluidhandling

BEERDIAL: FOR SEVERE CLEANING CONDITION



Our rubber coated nuts prevent burns and guarantee optimal tightening by hand

Proprietary fitting system:

- No risk of disconnection
- No retention area, preventing bacterial growth

PHthalates FREE

BISPhenol A FREE

REACH

Each hose assembly has, engraved on ferrule, assembly date, ID number and pressure test value

Before first use, you should proceed as follows in order to prevent any alteration of your fluid.

- Fill hose with hot water (70°C to 80°C).
- Keep water inside for minimum 2 hours.
- Then, clean hose using any of the following cleaning processes which should prevent early ageing of your hoses.

△ ADVICE FOR CLEANING PROCESSES

- These recommendations are based on maximum of 2 cycles a day (with maximum 15 minutes in total for the chemical cleanings).

Every cleaning cycle must be immediately followed by a complete rinse.

For any other chemical or mix of chemicals, concentration, duration, temperature and frequency, please contact us to select the best hose for your application.

TRELLEBORG	Max duration in total	BEERDIAL
Hot water	max 30 minutes	max 95 °C
Steam (open end circuit)	max 10 or 30 minutes	max 130 °C during max 30 minutes
Nitric acid	max 15 minutes	0.1% at max 85 °C 3% at room temperature
Phosphoric acid		1% at max 85 °C 3% at room temperature
Chlorinated products (hydrochloric acid, sodium hypochlorite...)		1% at max 70 °C
Sodium hydroxide		2% at max 80 °C 5% at room temp.
Hydrogen peroxide		1.5% at max 85 °C 3% at room temperature
Peracetic acid		1% at max 50 °C

△ REGULAR CHECKS

It is recommended to carry out regular checks on the hose (cover and tube) to make sure it is still safe of use as its original properties will eventually alter upon usage.

△ STORAGE

Keep away from (sun) light and heat. Only use pierced plugs when needed.

△ STAGNATION

Prohibited.

⊗ BE CAREFUL

Do not use high pressure cleaning systems to wash inside the hose.

REGULATIONS AND STANDARDS

Compounds and hoses are all complying with latest regulations:

- European regulations 1935/2004 and 2023/2006 ; France: order of 5/8/2020 ;
- Germany: BfR recommendation XXI when applicable ;
- USA: FDA - 21 CFR 177.2600.



Ensuring hygiene and safety in your beverage industry

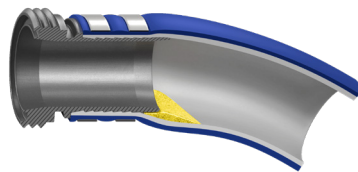
Prioritizing safety and hygiene in the beverage industry is not just about compliance but also about ensuring the well-being of consumers and the success of the business.

To meet the needs of this demanding industry, Trelleborg has developed solutions to prevent contamination and maintain product quality.

How do our assembly methods ensure better hygiene for your transfers?

The way we assemble our hoses considerably reduces the potential for retention zones between hose and fitting. This reduces the risk of fluid contamination.

Competition Clamp assemblies

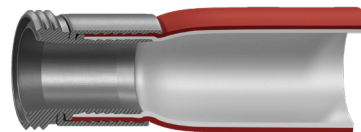
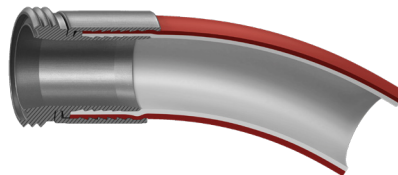


Bent hose



Under pressure

Trelleborg UTS Crimping solution



Trelleborg coupling system has been designed to meet any connection used on your brewerie equipment. Our distributor and partners, all over the world, will make hose assemblies to your request following the Trelleborg procedures.

UTS Trelleborg Universal system : DIN, MACON, SMS, CLAMP, GUILLEMIN, SPHERICAL (EURO RAPID).



Stainless Steel nut



DIN



SMS



MACON

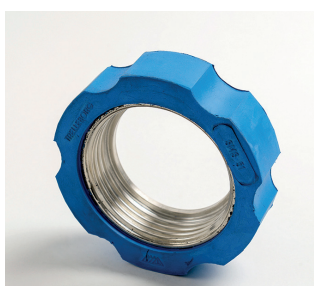


CLAMP



GUILLEMIN 1/2 sym.

Rubber Coated nut



Concept created by Trelleborg

Tool-free tightening
Shock protection
Wide range of diameters
DIN, SMS & MACON
version available

Beerdial

The beer industry is one of the oldest in the world and has been constantly evolving ever since. From small craft artisanal beer producer to global multinational producer, the choice of industrial hoses is crucial for maintaining fluid quality and ensuring the overall efficiency of the brewing process.

Trelleborg enhances its beverage range with a new hose for the beer brewing industry: **BEERDIAL**.

Brewery dedicated

Innocuity

Food defense

Special polymer



Technical details

- Inner Tube: special polymer SKM
- Working pressure (bar) : 15 bar
- Cover: special polymer, red color
- Temperature : -40°C to +120°C
- Diameter range: from 25 to 100 mm

Standards

- EU regulations No. 1935/2004, 2023/2006
- FDA regulation No. 21 CFR 177.2600
- French legislation 05/08/2020
- All relevant migrations tests (France and FDA) were performed by the French institute of Poitiers (IANESCO) and confirmed compliant.
- Phthalates Free, BPA Free, MOAH&MOSH Free



Key features

- Optimum organoleptic neutrality, tasteless and odorless to maintain quality
- Alcohol up to 96%
- Ultra white and smooth inner tube for easy cleaning and improved transfer fluidity
- High resistance to the most commonly used chemical cleaning products
- Highly flexible for better handling
- High resistance to temperature
- High pressure resistance to meet the demands of major food standards

Benefits

- Long lifespan
- Taste and odor free
- Fully compliant to current food standards
- Designed specifically for your industry
- No contamination



ELEVATING YOUR FOOD DEFENSE

Equip your BEERDIAL with the SafeFlow®



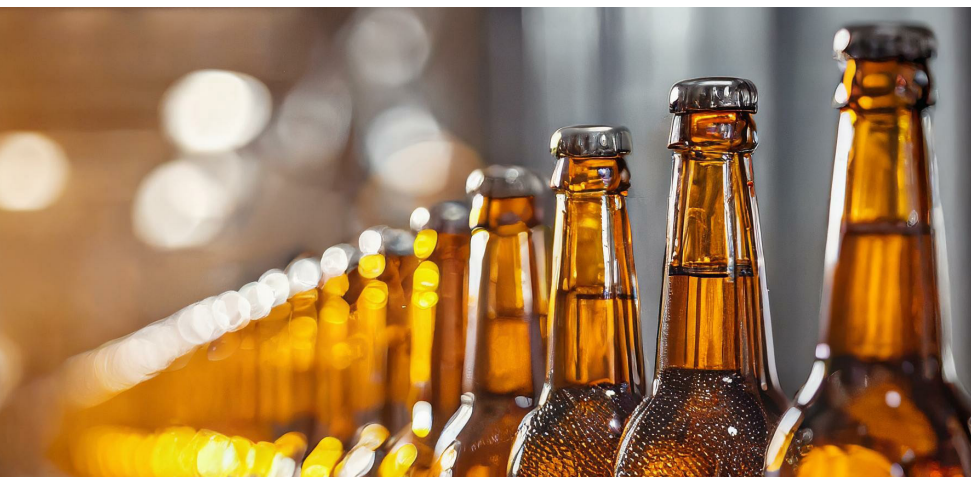
To answers to your safety and food defense issues, we developed an innovative solution for your assemblies call SafeFlow®.

DETECTION SOLUTION

A coupling connection integrating and RFID chip associated with a sensor, in other words a reader head, makes it possible to detect, in real time, whether your fitting is tight and watertight.

CONNECTION SOLUTION

The detection solution can be easily readable with a smartphone camera and data about the working life of the hose can be stored in a dedicated mobile application. A revolutionary solution for traceability, monitoring and preventive maintenance for your hose fleet.





Trelleborg is a world leader in engineered polymer solutions that seal, damp and protect critical applications in demanding environments. Its innovative solutions accelerate performance for customers in a sustainable way.

TRELLEBORG FLUID HANDLING SOLUTIONS

Trelleborg Clermont-Ferrand SAS, ZI La Combaude, Rue de Chantemerle, CS 10725, 63050 Clermont-Ferrand cedex 2, France
Tel +33 (0)4 73 25 81 00, Fax +33 (0)4 73 25 82 17, tes.serviceclients@trelleborg.com, www.trelleborg.com/fluidhandling