

Dragline Fairlead Buffers



Trelleborg Dragline Fairlead Buffers

Trelleborg manufacture and supply Fairlead Buffers for draglines.

The buffers are usually supplied in pairs and designed to fit on models of either the Bucyrus Erie or Marion Draglines, replacing the “Snubber” brake system on the Marion or the mechanical tie on the Bucyrus. Our buffers have been operating on draglines for in excess of twenty years without any failures.

The Fairlead Buffers are manufactured from a specially compounded soft rubber that replaces the rigid mechanical separator system and provides superior resilience, dampening and durability.

This same rubber compound has been successfully used in our marine fenders, which have a design life in excess of 15 years.

They are manufactured by full compression moulding to ensure integrity and long term

reliability. Other manufacturing processes do not achieve the same integrity.

Trelleborg’s Fairlead Buffers are designed to provide a long life, maintenance free solution that reduces down time and associated costs by limiting operational shock on the Fairleads, Sheaves and their attendant systems:

- Less transmitted shock loads from Fairleads
- Protect sheaves and plates
- Enable the fairlead unit to operate effectively under compression and expansion
- Reduce jarring in operation
- Greatly reduce maintenance costs and down time

Sheave Modification

Proven sheave modification systems are available for all machines.

Recent Installations Include:

Australia

- South Blackwater
- BHP Peak Downs
- BHP Moura
- BHP Norwich Park
- BHP Blackwater
- Callide Coalfields
- Peabody Resources - Ravensworth Mine
- Blair Athol Mine

South Africa

- Billiton Energy (various mines)
- Glencore Optimum field
- Glencore Tweefontein field
- Glencore iMpunzi field
- Anglo American New Vaal Colliery
- Anglo American Landau Colliery

United States

- Mosaic Phosphate Florida



In this configuration, no maintenance of any kind has been necessary since installation in 1996.

Note the absence of moving parts and lubrication points.



Marion Model 8050

(un-modified)



Constant shock requires frequent maintenance of mechanical connections & lubrication of bearings.

(modified)



View shows simple method of replacing spacer bar with bolted frames and buffers held by long bolts.

Bucyrus Model 1570

(modified)



General configuration of modified sheaves.

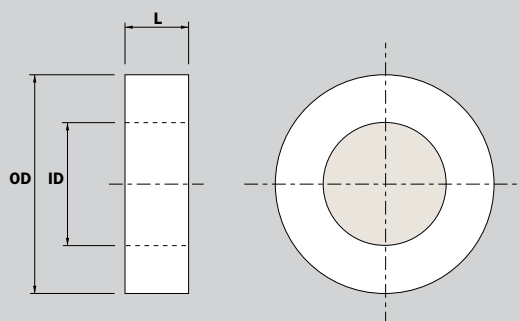


Simple on site modification by the addition of three plates to each Sheave housing, with long bolt fasteners.

These buffers have been in service since 1997 and display no signs of damage or deterioration.

FAIRLEAD BUFFERS

OD (MM)	ID (MM)	L (MM)	WEIGHT (KG)	WEIGHT (LBS)
600	300	260	68	150
1050±21	570±11	380±10	256	565
1220±30	760±15	380±10	300	660
2100±42	1050±21	565±11	1615	3570





Trelleborg Engineered Products is part of the Trelleborg Offshore & Construction business area of the Trelleborg Group. Trelleborg Engineered Products is a leading global developer, manufacturer and provider of engineered polymer solutions to the energy, infrastructure and mining industries. Performing in some of the harshest environments on earth, its principal products are sealing systems for tunnels, a wide range of bearings, polymer solutions for floatover technology and wear resistant products for the mining industry. With local support, a track record of over 100 years and its everyday ingenuity, customers can rely on Trelleborg Engineered Products to deliver innovative polymer solutions that significantly improve the quality, safety and efficiency of its customers' operations worldwide.

WWW.TRELLEBORG.COM/ENGINEEREDPRODUCTS



facebook.com/Trelleborggroup
twitter.com/TrelleborgGroup
youtube.com/trelleborg
flickr.com/trelleborg
linkedin.com/company/trelleborg

