



Isodamp and IsoLoss – grommets, mounts and isolators

Noise, vibration and shock control

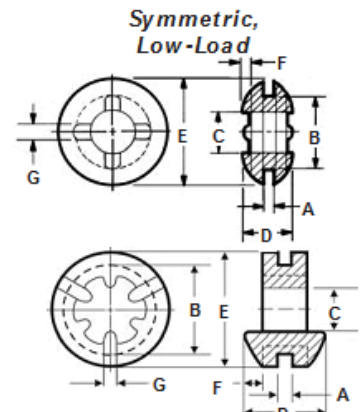
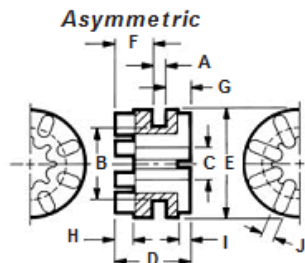
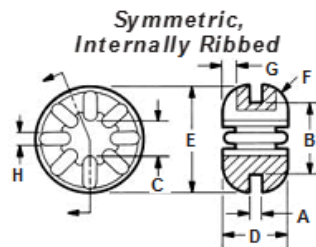
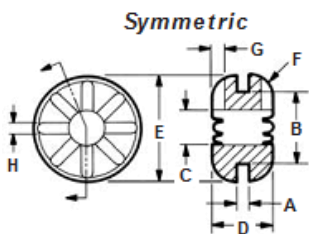
The interrelated dynamics of multiple motors, fans or blowers, actuators and other mechanisms inside OEM and transportation equipment can present complications that prove nearly impossible to define precisely. In addition, product designers must consider noise control, as well as unpredictable vibration and shock inputs from external sources. The process of addressing these complications has been simplified with our comprehensive range of standard isolators and mounts molded from proprietary, highly damped Isodamp, VersaDamp thermoplastics and IsoLoss elastomer thermosets

Applications:

- Computers
- Medical
- Printers
- Laboratory

Benefits:

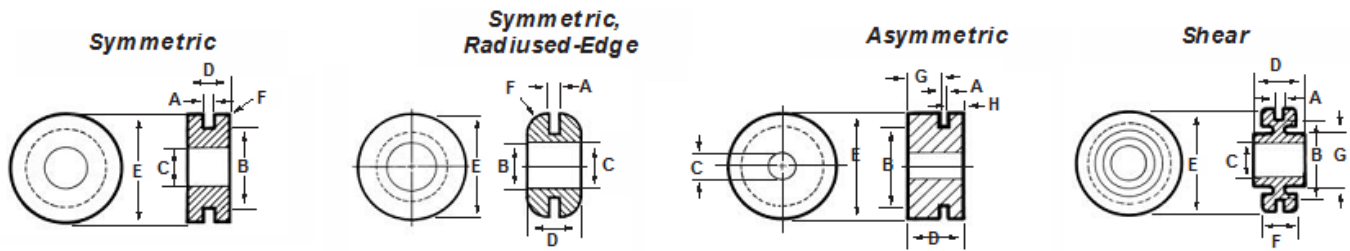
- Engineered to control noise, vibration and shock in minimum sway space - offers a solution for almost any application
- Variety of formulations engineered to perform in discrete temperature ranges - comprehensive range of products to choose from
- Excellent physical integrity - soft and pliable yet physically strong
- Flexible - easy to install



Family	Product	Load (lbs)	Dimensions (inches)								
			Recommended Maximum	A Plate Thckns.	B Hole Diam.	C Inside Diam.	D Overall Height	E Outside Diam.	F Edge Radius	G Rib Height	H Rib Width
ISODAMP / VersaDamp	RIBBED GROMMETS Symmetric	G-401	6.0	.063	.375	.224	.313	.563	.125	.063	.063
		G-402	6.0	.125	.375	.226	.375	.563	.125	.063	.063
		G-403	6.0	.063	.375	.276	.313	.625	.125	.063	.063
		G-404	6.0	.125	.375	.281	.375	.625	.125	.063	.063
	Symmetric, Internally Ribbed	G-410	3.0	.057	.250	.158	.230	.379	.050	.040	.050
		G-411	6.0	.063	.375	.188	.323	.563	.130	.063	.063
		G-412	3.0	.031	.250	.158	.230	.379	.050	.040	.050
		G-414	6.0	.043	.375	.188	.323	.563	.130	.063	.063
	Asymmetric	G-430	5.0	.055	.375	.180	.395	.560	.210/.130	.100/.065	.062
		G-431	8.0	.055	.560	.172	.390	.750	.210/.125	.100/.065	.062
Symmetric, Low-Load	G-427	1.5	.049	.312	.180	.194	.440	.025	.056		
	G-461	0.3	.037	.298	.157	.271	.393	.063	.051		
	G-462	0.3	.047	.304	.153	.276	.393	.063	.051		

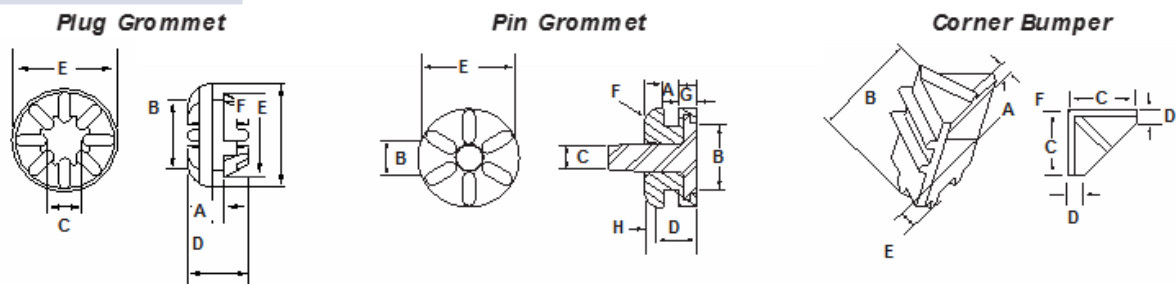
For C-1002 material, indicate "-1" after part number (e.g. G-401-1)
 For C-1105 material, indicate "-2" after the part number (e.g. G-401-2)
 For C-1100 material, indicate "-3" after the part number (e.g. G-401-3)
 For C-8002 material, indicate "-8" after the part number (e.g. G-401-8)
 For VersaDamp material, indicate "-formulation number" after the part number (e.g. G-401-2325)

	C-1002	C-1105	C-1100	C-8002	VersaDamp
Grommet Color	Blue	Turquoise	Yellow	SkyBlue	Black
Peak Performance Temp. Range at 1000 Hz	55F-105F (13C-41C)	80F-130F (27C-54C)	95F-145F (35C-63C)	62F-105F (17C-41C)	-40F-122F (-40C-50C)



Family	Product	Load (lbs)	Dimensions (inches)								
			Recommended Maximum	A Plate Thkns.	B Hole Diam.	C Inside Diam.	D Overall Height	E Outside Diam.	F Edge Radius	G Lg. Flg. Height	H Sm. Flg. Height
ISODAMP / VersaDamp	NON-RIEDED GROMMETS Symmetric	G-501	17.0	.060	.360	.187	.120	.500	n/a	n/a	n/a
		G-502	17.0	.063	.338	.182	.182	.500	n/a	n/a	n/a
		G-503	10.0	.054	.244	.190	.306	.385	.020	n/a	n/a
		G-504	13.0	.063	.309	.183	.187	.437	n/a	n/a	n/a
		G-505	17.0	.062	.375	.190	.175	.500	n/a	n/a	n/a
		G-506	14.0	.043	.319	.177	.220	.460	.020	n/a	n/a
		G-507	40.0	.070	.503	.277	.396	.751	.050	n/a	n/a
	Sym., Radiused-Edge	G-521	25.0	.062	.375	.270	.325	.625	.125	n/a	n/a
	Asymmetric	G-511	40.0	.063	.562	.180	.395	.753	n/a	.214	.118
		G-512	26.0	.115	.437	.245	.620	.625	n/a	.380	.125
G-513		40.0	.078	.500	.304	.500	.750	n/a	.290	.132	

			A Plate Thkns.	B Hole Diam.	C Inside Diam.	D Overall Height	E Outside Diam.	F Flange Thkns.	G Boss Out. Diam.	—
Shear	G-601	2.0	.056	.560	.248	.375	.750	.235	.375	—



Family	Product	Dimensions (inches)					
		A Plate Thkns.	B Hole Diam.	C Inside Diam.	D Overall Height	E Outside Diam.	F Snap-fit Diam.
PLUG GROMMETS	P-410	.057	.250	.158	.255	.379	.344
	P-411	.063	.395	.188	.323	.563	.457
	P-415	.039	.250	.158	.255	.379	.365

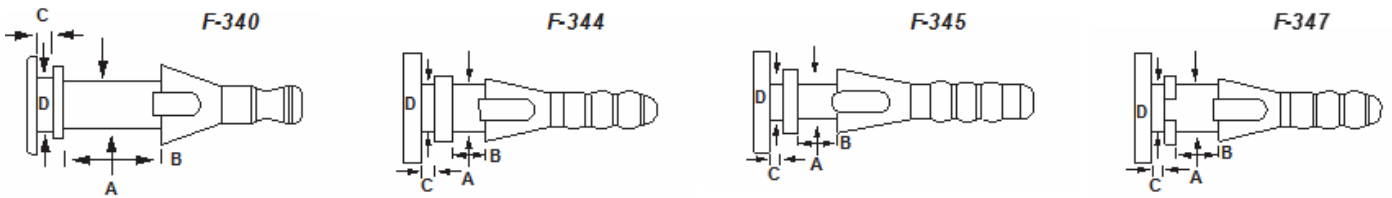
		Dimensions (mm)							
		A Plate Thkns.	B Hole Diam.	C Pin Diam.	D Grommet Height	E Outside Diam.	F Edge radius.	G Lg Flg. Height	H Sm Flg. Height
PIN GROMMETS	PG-100	1.5	6.4	2.5	5.0	9.8	1.27	1.75	1.75

		Dimensions (mm)					
		A Drive Thkns.	B Bumper Height	C Bumper Length	D Side Wall Thkns.	E Bottom Wall Thkns.	F Top Wall Thkns.
CORNER BUMPERS	CB-100	5.0	9.75	6.00	1.5	1.5	3.25
	CB-101	5.0	8.00	6.75	1.5	1.5	1.50

For C-1002 material, indicate "-1" after the part number (e.g. G-401-1)
 For C-1105 material, indicate "-2" after the part number (e.g. G-401-2)
 For C-1100 material, indicate "-3" after the part number (e.g. G-401-3)
 For C-8002 material, indicate "-3" after the part number (e.g. G-401-3)
 For VersaDamp material, indicate "-formulation number" after the part number (e.g. G-401-2325)
 Dimensions given here are nominal. Exact specification print available on request.

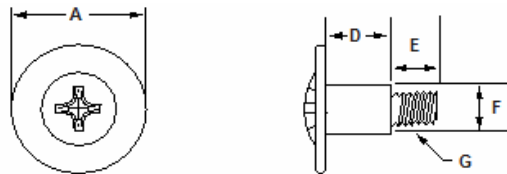
	C-1002	C-1105	C-1100	C-8002	VersaDamp
Grommet Color	Blue	Turquoise	Yellow	SkyBlue	Black
Peak Performance Temp. Range at 1000 Hz	56F-105F (13C-41C)	80F-130F (27C-54C)	95F-145F (35C-83C)	82F-105F (17C-41C)	-40F-122F (-40C-50C)

Fan Mounts



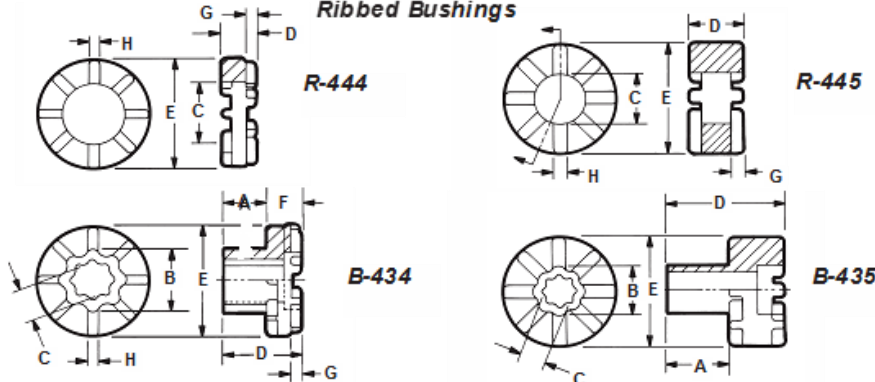
Family	Description	Dimensions (mm)			
		A Fan Hole Diam.	B Fan Hole Depth	C Plate Thckns.	D Plate Hole Diam.
ISODAMP/VersaDamp					
FAN MOUNTS	F-340	2.5	5.0	.80	2.75
	F-344	4.4	3.0	1.3	4.4
	F-345	3.5	3.8	1.3	3.5
	F-347	4.4	4.5	0.8	4.5

Shoulder Bolts

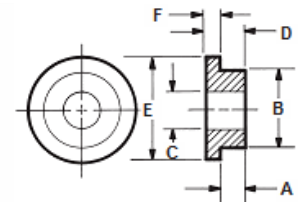


Family	Product	Use With	Dimensions (mm)				
			A Head Diam.	D Shoulder Length	E Thread Length	F Shoulder Diam.	G Thread
SHOULDER BOLTS							
SHOULDER BOLTS	SB-4102	G-410	.350	.214	.215-.185	.161	6-32 UNC-2A
	SB-4105	G-410	.350	.214	.150-.126	.161	M3-0.5
	SB-4107	G-410	.350	.214	.215-.185	.161	M3-0.5
	SB-4112	G-411	.500	.300	.215-.185	.196	6-32 UNC-2A
	SB-4114	G-411	.500	.300	.215-.185	.194	M4-0.7
	SB-4118	G-411	.500	.250	.215-.185	.188	6-32 UNC-2A

Ribbed Bushings



Non-ribbed Bushings

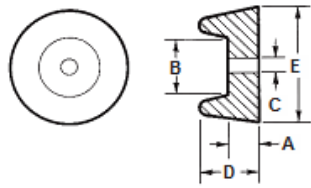


Family	Product	Load (lbs)	Dimensions (inches)							
			A Shank Height	B Shank Diam.	C Inside Diam.	D Overall Height	E Flange Diam.	F Flange Height	G Rib Height	H Rib Width
ISODAMP/VersaDamp										
BU SHINGS Ribbed	R-444	10.0	n/a	n/a	.460	.250	.813	n/a	.078	.085
	B-434	10.0	.313	.469	.260	.563	.813	.250	.078	.085
	R-445	25.0	n/a	n/a	.457	.520	1.000	n/a	.132	.125
	B-435	25.0	.544	.473	.260	1.060	1.000	.516	.132	.135
Non-Ribbed	B-531	17.0	.120	.360	.189	.175	.500	.055	n/a	n/a
	B-532	40.0	.139	.420	.271	.259	.750	.120	n/a	n/a
	B-533	100.0	.085	.750	.427	.325	1.265	.240	n/a	n/a

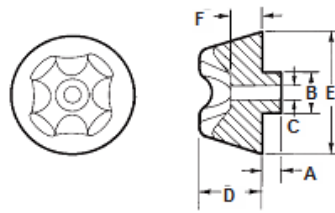
For C-1002 material, indicate "-1" after the part number (e.g. G-401-1)
 For C-1105 material, indicate "-2" after the part number (e.g. G-401-2)
 For C-1100 material, indicate "-3" after the part number (e.g. G-401-3)
 For C-8002 material, indicate "-8" after the part number (e.g. G-401-8)
 For VersaDamp material, indicate "-formulation number" after the part number (e.g. G-401-2325)
 Dimensions given here are nominal. Exact specification print available on request.

	C-1002	C-1105	C-1100	C-8002	VersaDamp
Grommet Color	Blue	Turquoise	Yellow	SkyBlue	Black
Peak Performance Temp. Range at 1000 Hz	55F-105F (13C-41C)	80F-130F (27C-54C)	95F-145F (35C-63C)	62F-105F (17C-41C)	-40F-122F (-40C-50C)

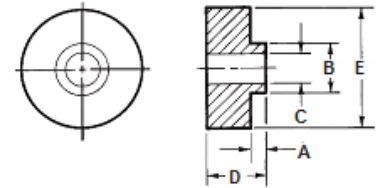
Mounting Feet



Mounting Feet

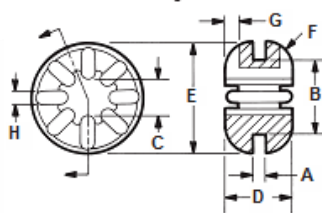


Equipment Mounts

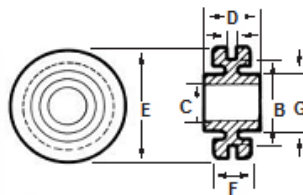


Family	Product	Load (lbs)	Dimensions (inches)					
			A	B	C	D	E	F
I S O D A M P		Recommended Maximum	Bolt Flg. Height	Bolt Flg. Diam.	Inside Diam.	Overall Height	Outside Diam.	Bolt Flg. Height
	C-1002 MOUNTING FEET	MF-1010	15.0	.270	.493	.123	.521	.982
	MF-1010PSA	15.0	.270	.493	.123	.521	.982	n/a
			A	B	C	D	E	F
			Shank Height	Shank Diam.	Inside Diam.	Mount Height	Mount Diam.	Bolt Flg. Height
C-1002 MOUNTING FEET	L-020	20.0	.215	.500	.194	.755	1.502	.410
	L-021	20.0	n/a	n/a	.194	.755	1.502	.410
	L-030	20.0	.215	.509	.325	.755	1.502	.410
	L-031	20.0	n/a	n/a	.320	.755	1.502	.410
C-1002 EQUIPMENT MOUNTS	ML-4250	70.0	.125	.500	.327	.625	1.172	n/a
	ML-42100	140.0	.188	.750	.443	.820	1.656	n/a
	ML-42200	300.0	.260	1.010	.575	1.007	2.371	n/a
	ML-42500	700.0	.355	1.000	.549	1.385	3.667	n/a

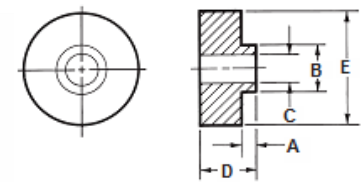
Symmetric, Internally Ribbed



Shear



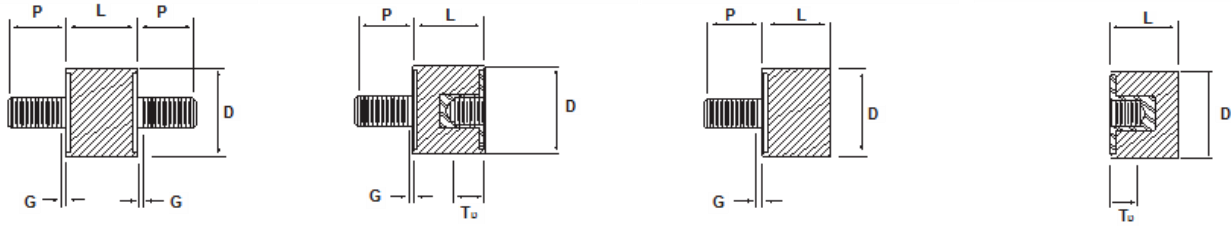
Equipment Mounts



Family	Description	Load (lbs)	Dimensions (inches)								
			A	B	C	D	E	F	G	H	
I S O L O S S		Recommended Maximum	Plate Thckns.	Hole Diam.	Inside Diam.	Overall Height	Outside Diam.	Edge Radius	Rib Height	Rib Width	
	HD/SL GROMMETS	Symmetric, Internally Ribbed	G-411-H	6.0	.063	.375	.188	.313	.555	.125	.063
		G-411-SL20100	1.0	.059	.375	.188	.308	.555	.123	.059	.063
	G-411-SL25200	1.0	.059	.375	.188	.308	.555	.123	.059	.063	
			A	B	C	D	E	F	G	H	
			Plate Thckns.	Hole Diam.	Inside Diam.	Overall Height	Outside Diam.	Flange Thckns.	Boss Out. Diam.	Rib Width	
Shear	G-601-H	2.0	.056	.565	.245	.375	.750	.237	.375	n/a	
	G-601-SL20100	.3	.050	.569	.245	.380	.755	.245	.380	n/a	
	G-601-SL25200	.3	.050	.569	.245	.380	.755	.245	.380	n/a	
			A	B	C	D	E	F	G	H	
			Shank Height	Shank Diam.	Inside Diam.	Overall Height	Flange Diam.	Flange Thckns.	Boss Out. Diam.	Rib Width	
EQUIPMENT MOUNTS	ML-4250-H	70.0	.125	.495	.309	.629	1.169	n/a	n/a	n/a	
	ML-4250-SL20100	10.0	.126	.500	.313	.625	1.165	n/a	n/a	n/a	
	ML-4250-SL25200	10.0	.126	.500	.313	.625	1.165	n/a	n/a	n/a	

"H" after part number indicates ISOLOSSH material; "SL-XXXXX" after part number indicates ISOLOSSL material. Dimensions given here are nominal. Exact specification print available on request.

Male-Male Sandwich Mounts Male-Female Sandwich Mounts Male-Blank Sandwich Mounts Female-Blank Sandwich Mounts



Family	Product	Load (lbs)		Dimensions		Metal Insert				
		Maximum Compressive	Maximum Shear	D Diam. (in)	L Length (in)	Type	P Overall Height	G Grip (in)	T _D Depth (in)	
ISOLOSS										
HD/SL SANDWICH MOUNTS Male-Male	MM-100-UC04-H	4.0	1.5	.275	.320	#4-40	.200	.060	n/a	
	MM-100-UC04-SL20100	0.5	0.2	.280	.320	#4-40	.200	.060	n/a	
	MM-100-UC04-SL25200	0.5	0.2	.280	.320	#4-40	.200	.060	n/a	
	MM-200-UC06-H	8.0	3.0	.400	.500	#6-32	.375	.060	n/a	
	MM-200-UC06-SL20100	1.0	0.4	.405	.500	#6-32	.375	.060	n/a	
	MM-200-UC06-SL25200	1.0	0.4	.405	.500	#6-32	.375	.060	n/a	
	MM-200-UC08-H	8.0	3.0	.400	.500	#8-32	.375	.060	n/a	
	MM-200-UC08-SL20100	1.0	0.4	.405	.500	#8-32	.375	.060	n/a	
	MM-200-UC08-SL25200	1.0	0.4	.405	.500	#8-32	.375	.060	n/a	
	MM-300-UC25-H	20.0	5.0	.615	.625	1/4-20	.500	.100	n/a	
	MM-400-UC31-H	50.0	13.0	1.00	.750	5/16-18	.625	.100	n/a	
	Male-Blank	MB-100-UC04-H	4.0		.275	.320	#4-40	.200	.060	n/a
		MB-100-UC04-SL20100	0.5	n/a	.280	.320	#4-40	.200	.060	n/a
MB-100-UC04-SL25200		0.5	n/a	.280	.320	#4-40	.200	.060	n/a	
MB-200-UC06-H		8.0		.400	.500	#6-32	.375	.060	n/a	
MB-200-UC06-SL20100		1.0	n/a	.405	.500	#6-32	.375	.060	n/a	
MB-200-UC06-SL25200		1.0	n/a	.405	.500	#6-32	.375	.060	n/a	
MB-200-UC08-H		8.0		.400	.500	#8-32	.375	.060	n/a	
MB-200-UC08-SL20100		1.0	n/a	.405	.500	#8-32	.375	.060	n/a	
MB-200-UC08-SL25200		1.0	n/a	.405	.500	#8-32	.375	.060	n/a	
MB-300-UC25-H		20.0		.615	.625	1/4-20	.500	.100	n/a	
MB-400-UC31-H	50.0		1.00	.750	5/16-18	.625	.100	n/a		
Male-Female	MF-100-UC04-H	2.0	0.8	.275	.320	#4-40	.200	.060	.110	
	MF-100-UC04-SL20100	0.3	0.1	.280	.320	#4-40	.200	.060	.110	
	MF-100-UC04-SL25200	0.3	0.1	.280	.320	#4-40	.200	.060	.110	
	MF-200-UC06-H	4.0	2.0	.400	.500	#6-32	.375	.060	.160	
	MF-200-UC06-SL20100	0.6	0.3	.405	.500	#6-32	.375	.060	.160	
	MF-200-UC06-SL25200	0.6	0.3	.405	.500	#6-32	.375	.060	.160	
	MF-200-UC08-H	4.0	2.0	.400	.500	#8-32	.375	.060	.160	
	MF-200-UC08-SL20100	0.6	0.3	.405	.500	#8-32	.375	.060	.160	
	MF-200-UC08-SL20100	0.6	0.3	.405	.500	#8-32	.375	.060	.160	
	MF-300-UC25-H	12.0	3.5	.615	.625	1/4-20	.500	.100	.260	
MF-400-UC31-H	45.0	10.0	1.00	.750	5/16-18	.625	.100	.290		
Female-Blank	FB-100-UC04-H	2.0		.275	.320	#4-40	n/a	n/a	.110	
	FB-100-UC04-SL20100	0.3	n/a	.280	.320	#4-40	n/a	n/a	.110	
	FB-100-UC04-SL25200	0.3	n/a	.280	.320	#4-40	n/a	n/a	.110	
	FB-200-UC06-H	4.0		.400	.500	#6-32	n/a	n/a	.160	
	FB-200-UC06-SL20100	0.6	n/a	.405	.500	#6-32	n/a	n/a	.160	
	FB-200-UC06-SL25200	0.6	n/a	.405	.500	#6-32	n/a	n/a	.160	
	FB-200-UC08-H	4.0		.400	.500	#8-32	n/a	n/a	.160	
	FB-200-UC08-SL20100	0.6	n/a	.405	.500	#8-32	n/a	n/a	.160	
	FB-200-UC08-SL25200	0.6	n/a	.405	.500	#8-32	n/a	n/a	.160	
	FB-300-UC25-H	12.0		.615	.625	1/4-20	n/a	n/a	.260	
	FB-400-UC31-H	45.0		1.00	.750	5/16-18	n/a	n/a	.290	

H after part number indicates ISOLOSS HD material; *SL-XXXXX* after part number indicates ISOLOSS SL material. Dimensions given here are nominal.

Contact Us

Trelleborg Applied Technologies delivers innovative and reliable solutions that maximize business performance to meet your needs. Our dedicated and highly skilled staff are always on hand to provide seamless process support from initial idea, through to delivery and beyond.

Tel: +44 (0) 1777 712500
Email: appliedtechnologies@trelleborg.com



WWW.TRELLEBORG.COM/APPLIED-TECHNOLOGIES

